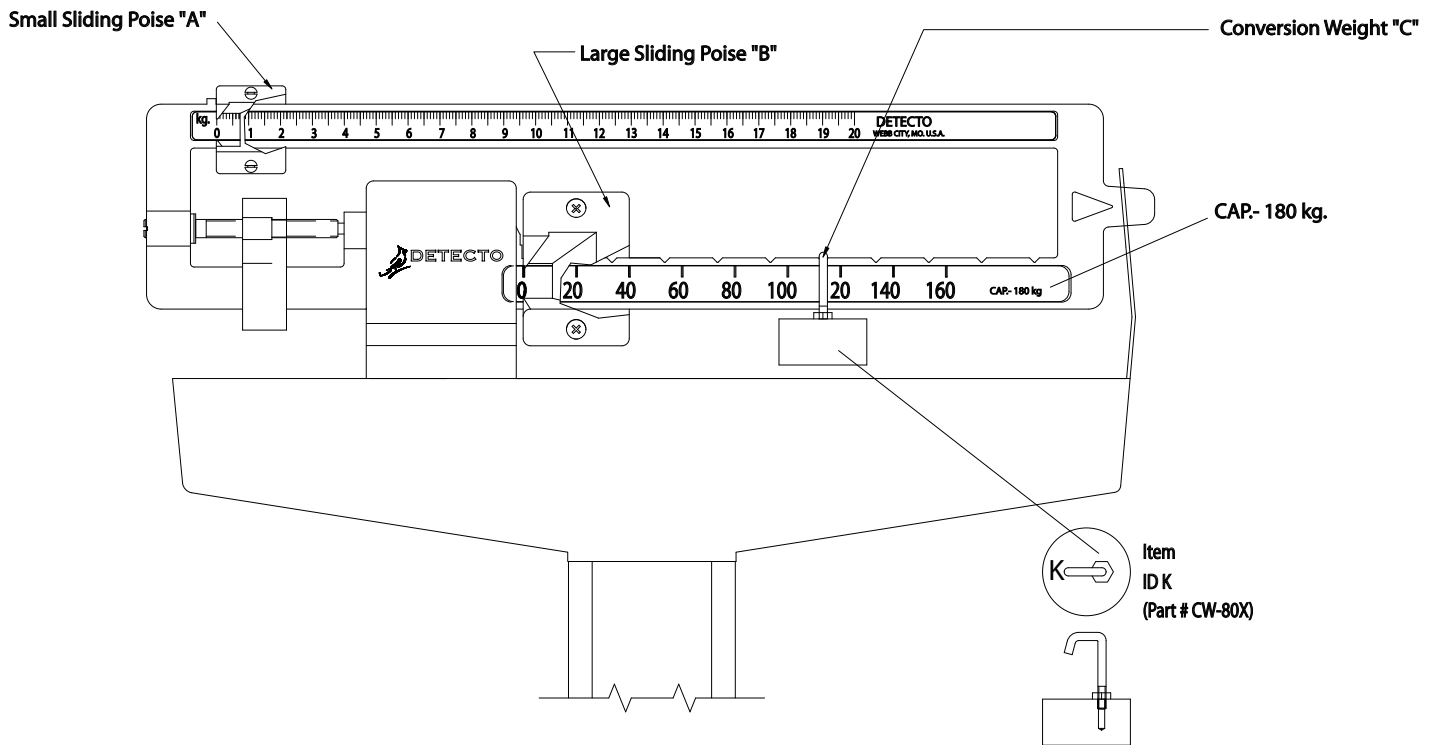


Instructions for Using a 180 kg to 220 kg Conversion Weight, ID #K



1. Do not use conversion weight "C" when weighing up to 180 kg.
2. From 180 kg. to 200 kg., place the large sliding poise "B" at the 140 kg. position and hang conversion weight "C" at notch shown between the 100 and 120 kg. graduations then slide small sliding poise "A" until scale balances.
3. From 200 kg. to 220 kg. place the large sliding poise "B" at the 160 kg. position and hang conversion weight "C" at notch shown between the 100 and 120 kg. graduations then slide the small sliding poise "A" until scale balances

NOTE: Conversion weight "C" hanging in position, specified above, will add 40 kg. to the reading of lower beam.

IMPORTANT: Conversion weight must be placed exactly as shown to weigh correctly.

NOTE: TO BE USED ON MODELS 2371, 2381, 2391, 2491 WITH 180 KILOGRAM CAPACITY BEAMS



203 E. Daugherty, Webb City, MO 64870 USA
Ph. 417-673-4631 or 800-641-2008 Fax: 417-673-2153
www.detecto.com
Technical Support: Ph: 866-254-8261 Email: tech@cardet.com

0033-M268-O1 Rev A
08/09