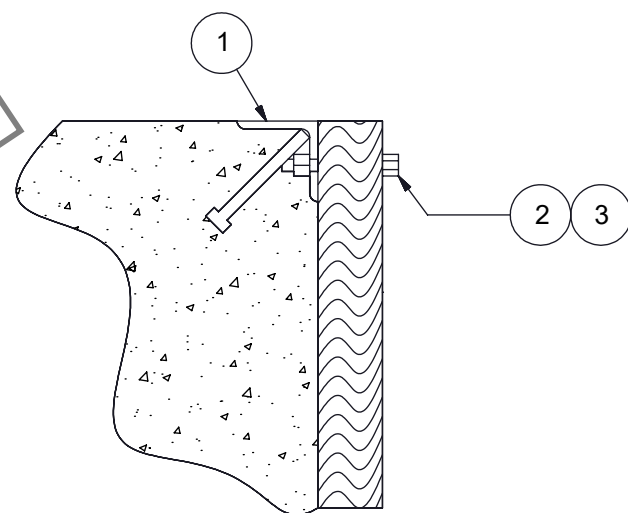
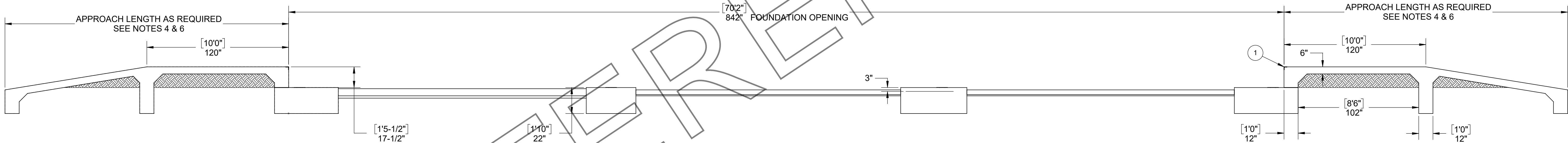
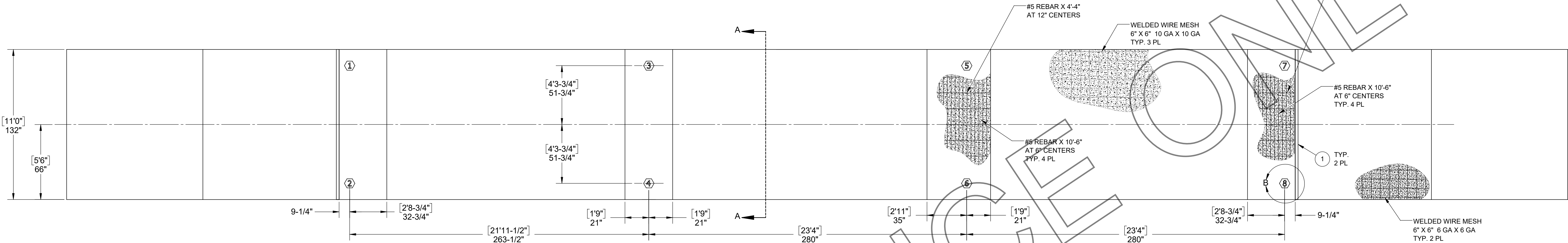
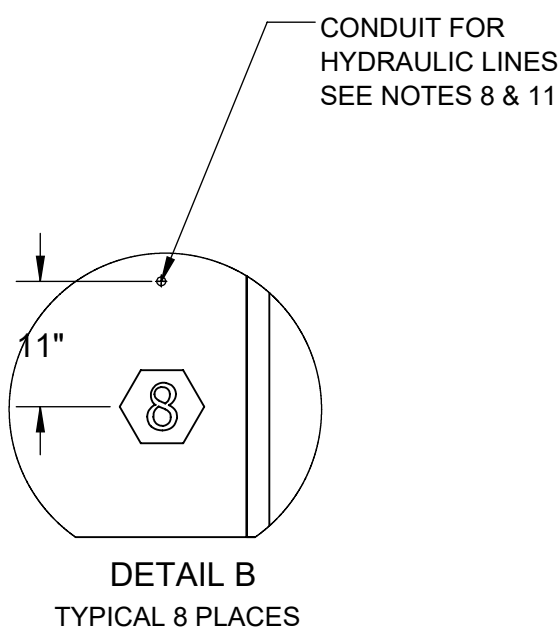


PIER LOADINGS AT 50 TON CLC	
LOAD CELL	LOADING
1	55.0 KIPS
2	55.0 KIPS
3	61.0 KIPS
4	61.0 KIPS
5	61.0 KIPS
6	61.0 KIPS
7	55.0 KIPS
8	55.0 KIPS

REVISION RECORD				
LTR	DESCRIPTION	DATE	ECO	BY
A	RELEASED FOR PRODUCTION	5/2/18	28714	DD




COPING ANGLE ATTACHMENT DETAIL



DETAIL B  
TYPICAL 8 PLACES

- NOTES:
- ITEMS 1 THROUGH 3 ARE FURNISHED BY CARDINAL SCALE MFG. CO. AS NOTED.
  - THE SCALE FOUNDATION AS SHOWN IS SUFFICIENT FOR FIRM SOIL AND GOOD CONCRETE. THE MINIMUM SOIL BEARING SHALL BE 3,000 POUNDS PER SQUARE FOOT AND THE MINIMUM CONCRETE STRENGTH SHALL BE 3,000 POUNDS PER SQUARE INCH, 28 DAY, FOR UNUSUAL SOIL CONDITIONS OR DEEP FROST PENETRATION, ALTER THE FOUNDATION AS REQUIRED. THE FOOTING SHALL BE BELOW THE FROST LINE.
  - CARDINAL SCALE MFG. CO. SHALL NOT BE RESPONSIBLE FOR THE STABILITY OF THE FOUNDATION.
  - THE FOUNDATION CONTRACTOR SHALL CONTACT THE STATE WEIGHT AND MEASURES DIVISION FOR STATE FOUNDATION REQUIREMENTS.
  - WORK FROM THE CENTERLINE WHEN ERECTING FORMS AND SETTING BOLTS.
  - ON THE APPROACH END OR ENDS OF A VEHICLE SCALE INSTALLED IN ANY ONE LOCATION FOR A PERIOD OF SIX MONTHS OR MORE, THERE SHALL BE A STRAIGHT AND LEVEL APPROACH AS FOLLOWS:  
(A) AT LEAST THE WIDTH OF THE PLATFORM AND  
(B) AT LEAST ONE-HALF THE LENGTH OF THE PLATFORM BUT NOT REQUIRED TO BE MORE THAN 40 FEET, AND  
(C) NOT LESS THAN 10 FEET OF ANY APPROACH ADJACENT TO THE PLATFORM SHALL BE CONSTRUCTED OF CONCRETE OR SIMILAR DURABLE MATERIAL TO INSURE THAT THIS PORTION REMAINS SMOOTH AND LEVEL AND IN THE SAME PLANE AS THE PLATFORM. HOWEVER, GRATING OF SUFFICIENT STRENGTH TO WITHSTAND ALL LOADS MAY BE INSTALLED IN THIS PORTION; AND FURTHER WHERE DEEMED NECESSARY FOR DRAINAGE PURPOSES, THE REMAINING PORTION OF THE APPROACH MAY SLOPE SLIGHTLY.
  - EXCAVATION AND CONCRETE REQUIRED FOR SCALE FOUNDATION AS SHOWN: MAIN PIERS: 16.9 CU. YDS. EXCAVATION; 22.3 CU. YDS. CONCRETE SLAB FLOOR: 5.8 CU. YDS. EXCAVATION; 7.7 CU. YDS. CONCRETE APPROACHES: (10'-0" EACH END): 7.4 CU. YDS. FILL; 3.7 CU. YDS. CONCRETE
  - HYDRAULIC TUBING FROM LOAD CELL TO PULL BOX MUST BE IN 1" MINIMUM SIZE CONDUIT & FROM PULL BOX TO TOTALIZER MUST BE IN 2" MINIMUM CONDUIT AT LEAST 24" FROM THE CLOSEST ELECTRICAL LINE. THEY MAY CROSS AT 90° ONLY. (LOCATION OPTIONAL)
  - REINFORCING ROD AND WELDED WIRE MESH ARE NOT FURNISHED BY CARDINAL SCALE MFG. CO. THE REBAR SHALL CONFORM TO ASTM A-185.
  - TOP OF PIERS ARE TO BE SMOOTH AND LEVEL WITHIN ±1/8". (ALL PIERS ARE TO BE WITHIN 1/4".)
  - PLACE THE CONDUIT A MINIMUM OF 11" AWAY FROM THE LOAD CELL GOING TOWARD THE CENTERLINE OF THE SCALE. THIS WILL ALLOW FOR 3 INCHES OF CLEARANCE BETWEEN THE CENTER OF THE HYDRAULIC CONDUIT LINE AND THE GROUT PLATE.

ITEM NO.	QTY.	PART NUMBER	DESCRIPTION	MATERIAL	WT EACH																								
1	2	0331-0106-0A	COPING ANGLE, END PIT 11' 0"		45.7																								
2	6	6007-0050	BLT HEX HD 3/8- 16x1 1/2" TAP BOLT G2 Z/P		0.0																								
3	6	6013-0065	NUT 3/8-16 HEX Z/P		0.0																								
TOTAL DESCRIPTION					WEIGHT: 91.6 LBS																								
TOLERANCE ON DIMENSIONS ARE: ANGLES ± 1/2° INTEGERS/FRACTIONS ± 1/16 IN. DECIMALS (X) ± .03 IN. DECIMALS (XX) ± .01 IN. DECIMALS (XXX) ± .005 IN. NOTE: WHOLE NUMBERS MUST BE WRITTEN XX,000 TO INVOKE DECIMAL TOLERANCES.			<div><div>CARDINAL DETECTO FULLER WEIGHING SYSTEMS</div></div> <div>TITLE FOUNDATION PLAN (840 X 132; 50 TON CLC) 17.5" X 22"</div> <table><tr><td>SCALE</td><td>N.T.S.</td><td>DO NOT SCALE DRAWING</td><td>DESIGNER A</td><td>PARENT MODEL</td><td>N/A</td></tr><tr><td>DR.</td><td>DATE</td><td></td><td></td><td></td><td></td></tr><tr><td>CH.</td><td>DATE</td><td></td><td>D</td><td>SHEET 1 OF 1</td><td></td></tr><tr><td>MODEL</td><td>1010527</td><td></td><td>DWG. NO. 0331-2227-0A</td><td></td><td>REV. A</td></tr></table>			SCALE	N.T.S.	DO NOT SCALE DRAWING	DESIGNER A	PARENT MODEL	N/A	DR.	DATE					CH.	DATE		D	SHEET 1 OF 1		MODEL	1010527		DWG. NO. 0331-2227-0A		REV. A
SCALE	N.T.S.	DO NOT SCALE DRAWING	DESIGNER A	PARENT MODEL	N/A																								
DR.	DATE																												
CH.	DATE		D	SHEET 1 OF 1																									
MODEL	1010527		DWG. NO. 0331-2227-0A		REV. A																								