



CARDINAL®

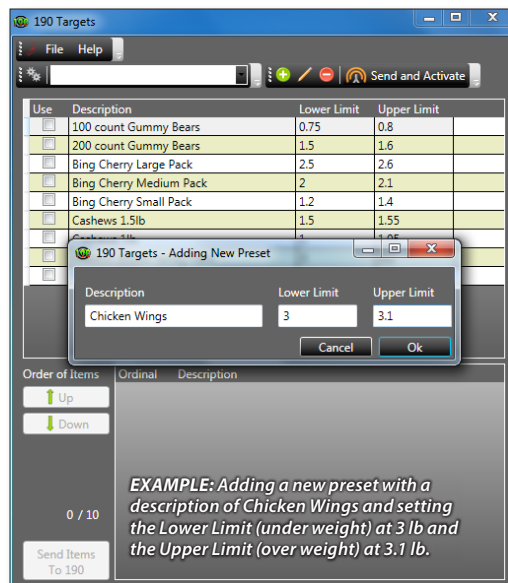
190 TARGETS

CHECKWEIGHING APPLICATION PC SOFTWARE



190 TARGETS

Expand your 190 checkweigher functionality with a virtually unlimited number of presets stored in the 190 Targets database



Cardinal Scale's 190 Targets is a PC-based application that allows the user to download checkweigher presets to a Cardinal model 190 weight indicator. The PC software stores a database of presets, that may easily be updated from one central location without the need to physically change the preset values on the 190 indicator whenever the presets change. The 190 Targets application allows you to create Under/Accept/Over target presets selected from a list and then easily managed them as the checkweighing target values need to be updated.

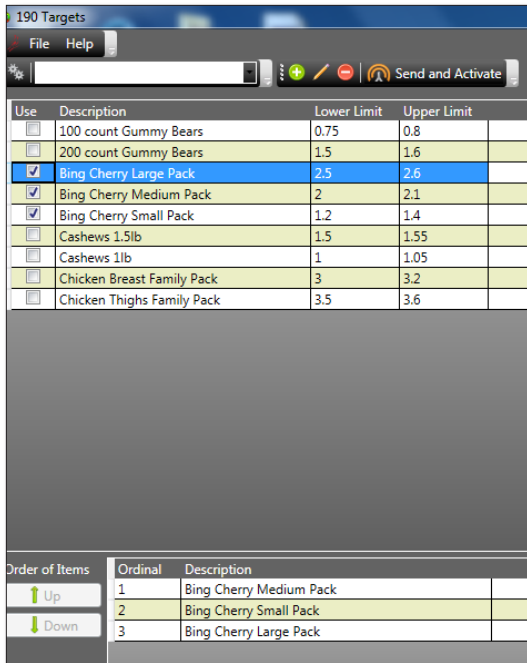


After installing 190 Targets on a PC, you can connect the PC to the 190 indicator via RS232 using the built-in serial port or the 190-RS232 option card, or if a connection on a LAN (Local Area Network) is desired the 190-IP option card allows a wired Ethernet connection, or the 190-WIFI option card can be used for a wireless LAN, so you have several connectivity options available between the indicator and PC.

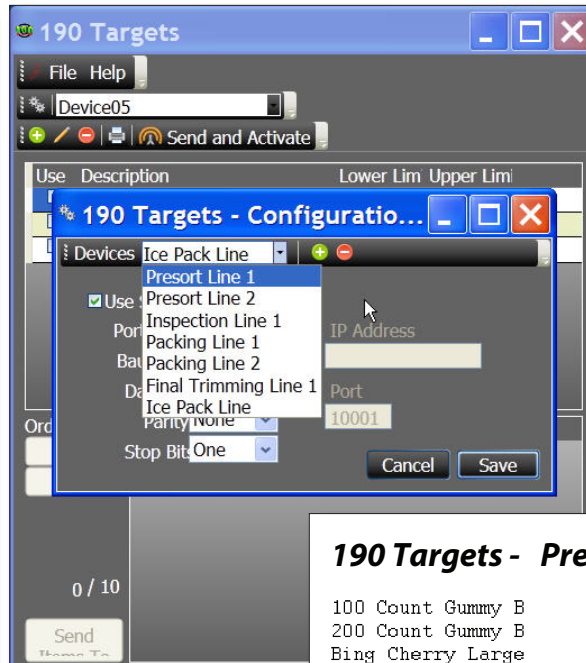




Easily maintain your target weight presets from a PC instead of at the 190 indicator



Selecting presets from the database to create a list and then ensuring they are in the proper order before sending it to the 190 indicator.



Selecting an indicator (Device) to configure the communication connection from the PC to the 190.

190 Targets - Presets

Preset Name	Lower Limit	Upper Limit
100 Count Gummy B	0.75	0.8
200 Count Gummy B	1.5	1.6
Bing Cherry Large	2.5	2.75
Bing Cherry S	1.2	1.3
Bing Cherry M	2	2.05
Cashews 1.5	1.5	1.55
Cashews 1lb	1	1.05
Chicken Breast Pack	4	4.2
Chicken Thigh Pack	4	4.1
Mushroom Large	3	3.05
Mushroom Medium	2	2.05
Mushroom Small	1	1.05

A printed list of preset examples. The left column is the preset name, the center column is the Lower Limit (under weight), and the right column is the Upper Limit (over weight).

Send and activate a single preset or a selection of up to 10 presets at once

FEATURES:

- Store virtually unlimited number of presets in 190 Targets database
- Each preset is identified by a unique name to avoid duplication errors
- Supports serial (RS232), wired Ethernet, or Wireless LAN connection to the PC
- Presets can easily be created, updated, or deleted using the PC keyboard and mouse instead of using the 190 indicator keypad
- Send and activate a single preset or create a list of up to 10 presets to send and activate to the indicator at once
- A list of the presets can be printed from the PC for verification of the preset settings
- Can be used with a single indicator or an operation with multiple indicators (Note that only one indicator can be updated at a time)

SPECIFICATIONS:

- PC running Windows 10 and the current version of ".NET Framework"
- Wired network Ethernet connection available using the 190-IP option card installed in the indicator
- Wireless LAN connection available using the 190-WIFI option card installed in the indicator
- RS232 serial port on the computer or a network connection wired Ethernet or wireless LAN (USB to serial adapter not supported)
- Connection from the PC to the 190 indicator requires the built-in 190 RS232 port or an optional 190-RS232 option card installed in the indicator

Cardinal Scale reserves the right to improve, enhance or modify features and specifications without prior notice. All registered trademarks are the property of their respective owners.



102 East Daugherty St., Webb City, MO 64870 USA
 Toll-Free: (800) 441-4237 E-mail: cardinal@cardet.com
 www.CardinalScale.com

SOLD BY: