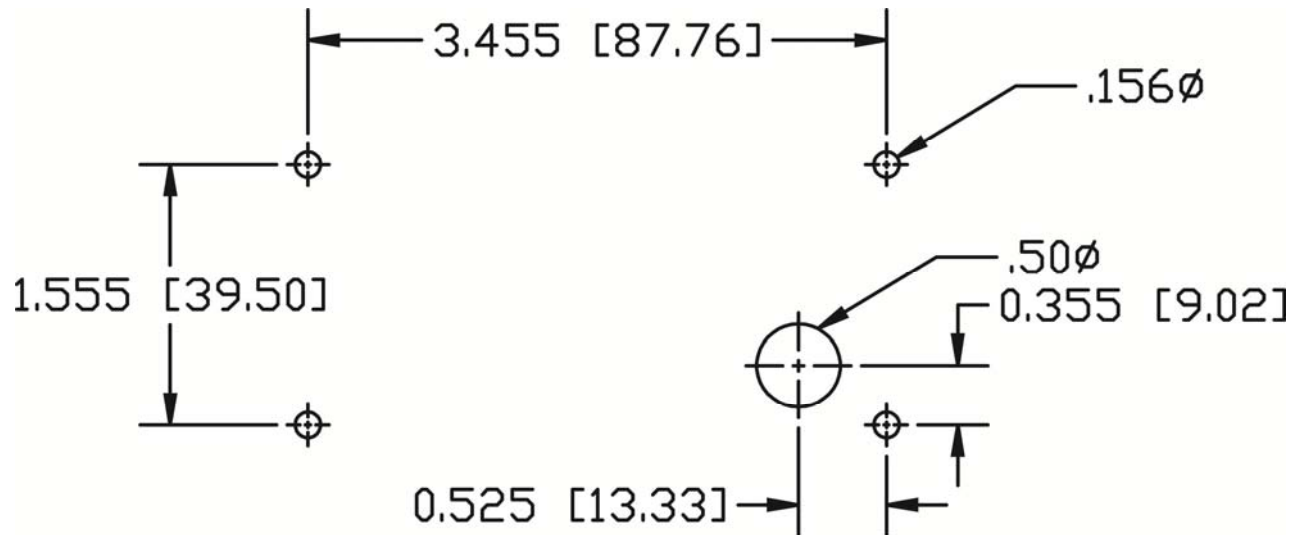




Model 201 Weight Transmitter Remote Display Mounting Instructions



NOTE: REFERENCE ONLY, NOT TO SCALE!

1. Remove top cover.
2. Remove four (4) Philips screws.
3. Mount display to enclosure using four (4) 6-32 screws.
4. Remove internal display cable.
5. Remove REMOTE DISPLAY knockout from cover.
6. Reinstall top cover.
7. Connect display 4-pin connector to REMOTE DISPLAY connector on 201.
8. Cut four (4) conductor (24AWG) shielded cable (6980-0103) to length.
9. Use four (4) position terminal block.
 - 6610-1565 Spring Cage Clamp terminals
10. Terminate wires in terminal block.
 - 1 to 1
 - 2 to 2
 - 3 to 3
 - 4 to 4
11. Terminate shield on one (1) end to chassis of 201 using #6 ring terminal.

8400-0146-2M Rev B 11/16

Technical Support: Ph: 866-254-8261 • tech@cardet.com