

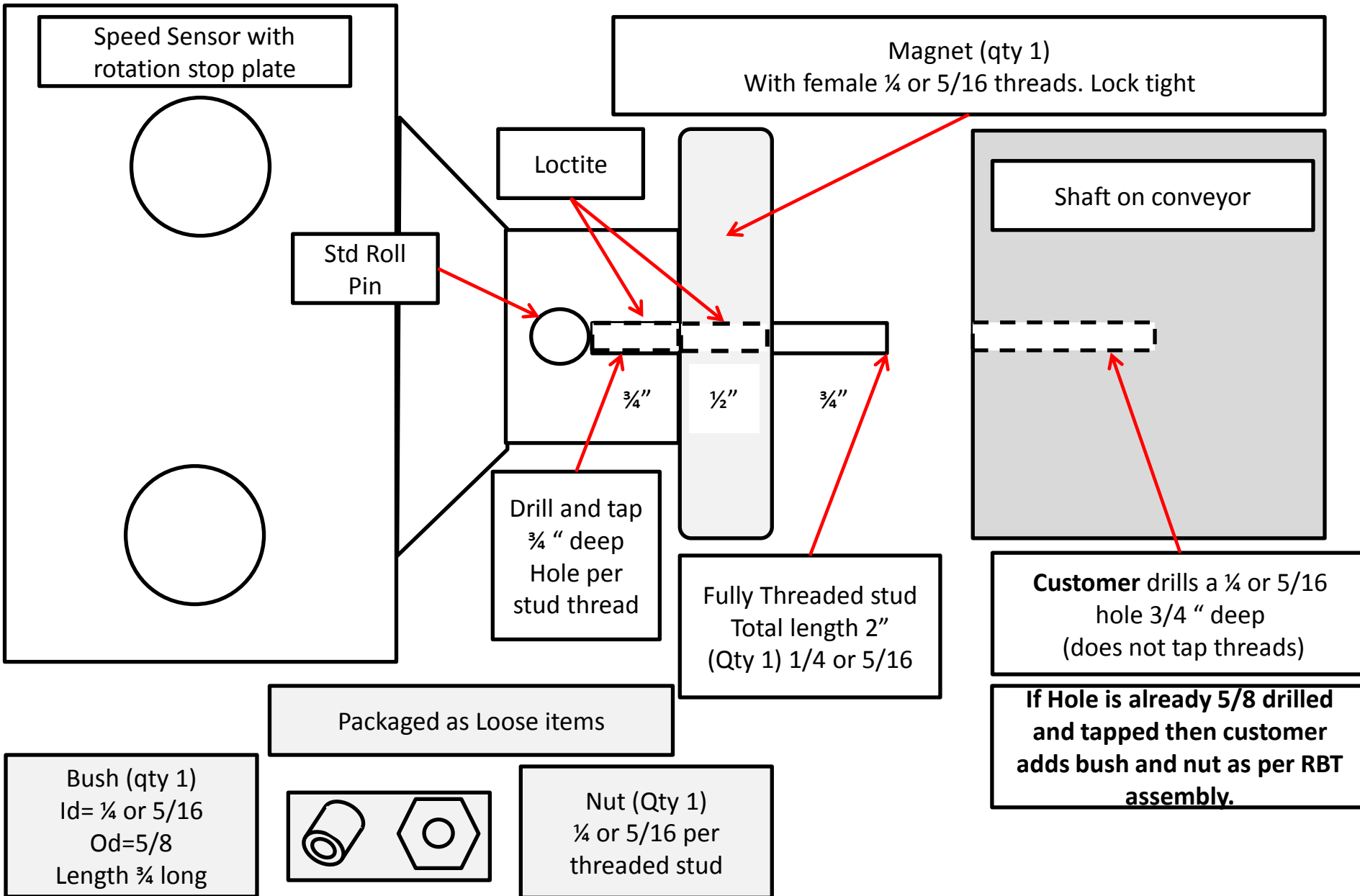
New Magnetic Speed Sensor

Standard User

Standard Option

8040-0042-0M Rev A 04/21

We need to decide which is better $\frac{1}{4}$ or $\frac{5}{16}$ stud

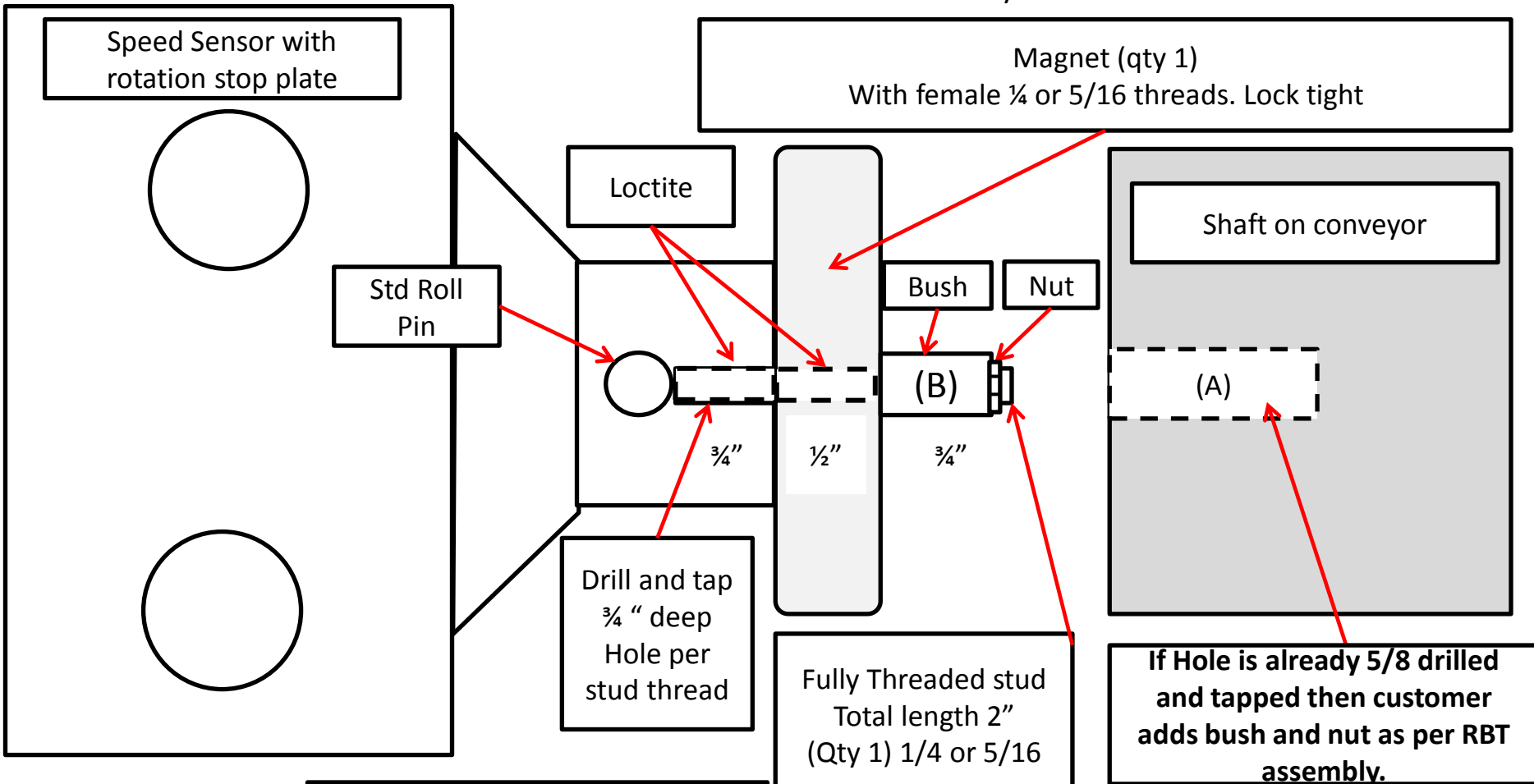


RBT Option

8040-0042-0M Rev A 04/21

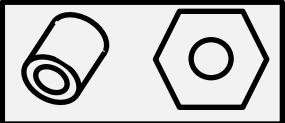
Just add Bush and Nut

We need to decide which is better $\frac{1}{4}$ or $\frac{5}{16}$ stud



Packaged as Loose items

Bush (qty 1)
Id= $\frac{1}{4}$ or $\frac{5}{16}$
Od= $\frac{5}{8}$
Length $\frac{3}{4}$ long



Nut (Qty 1)
 $\frac{1}{4}$ or $\frac{5}{16}$ per threaded stud

(A) The hole provides security that the magnet will re-attach if bumped.
(B) The bush and nut provide easy replacement for any shaft encoders that were drilled and tapped previously