

VNC Viewer Instructions

Monitor a Remote Display With VNC Viewer

The remote display can be monitored from two PC's, smart phones, or tablets running VNC (Virtual Network Computing) software and connected to the same Local Area Network. The remote display can be monitored over the Internet if the network router is properly configured to accept external connections and forward them to the remote display.

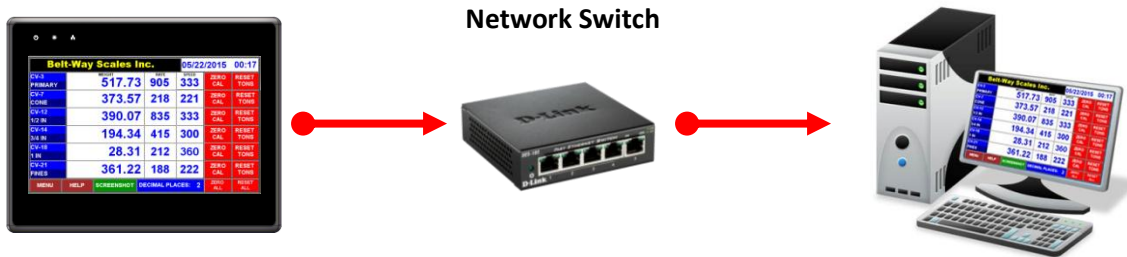
VNC Viewer is an inexpensive program that can be downloaded from www.realvnc.com, the iTunes App store or Google Play App store. Each device must be connected to the same hardware or wireless network and have a similar IP address (e.g. 192.168.1.XXX) as the remote display.

Various VNC Viewers look slightly different but work the same.

Note: Beltway Scales does not offer support on third party software. Use at your own risk.

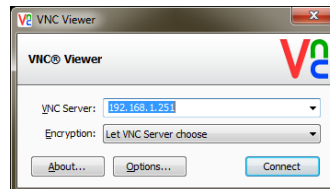
Example 1:

Local Area Network Only

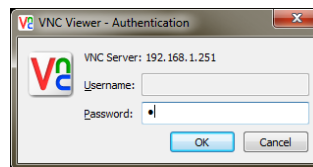


Step 1: Start the VNC Viewer and enter the IP address of the remote display.

The default is 192.168.1.251.

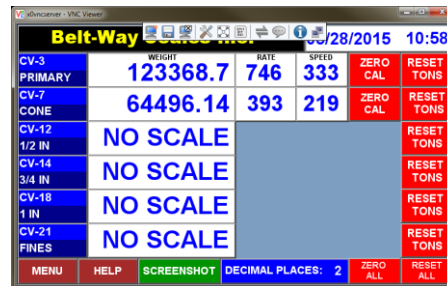


Step 2: Enter the default password of "1".



Step 3: VNC Viewer will start.

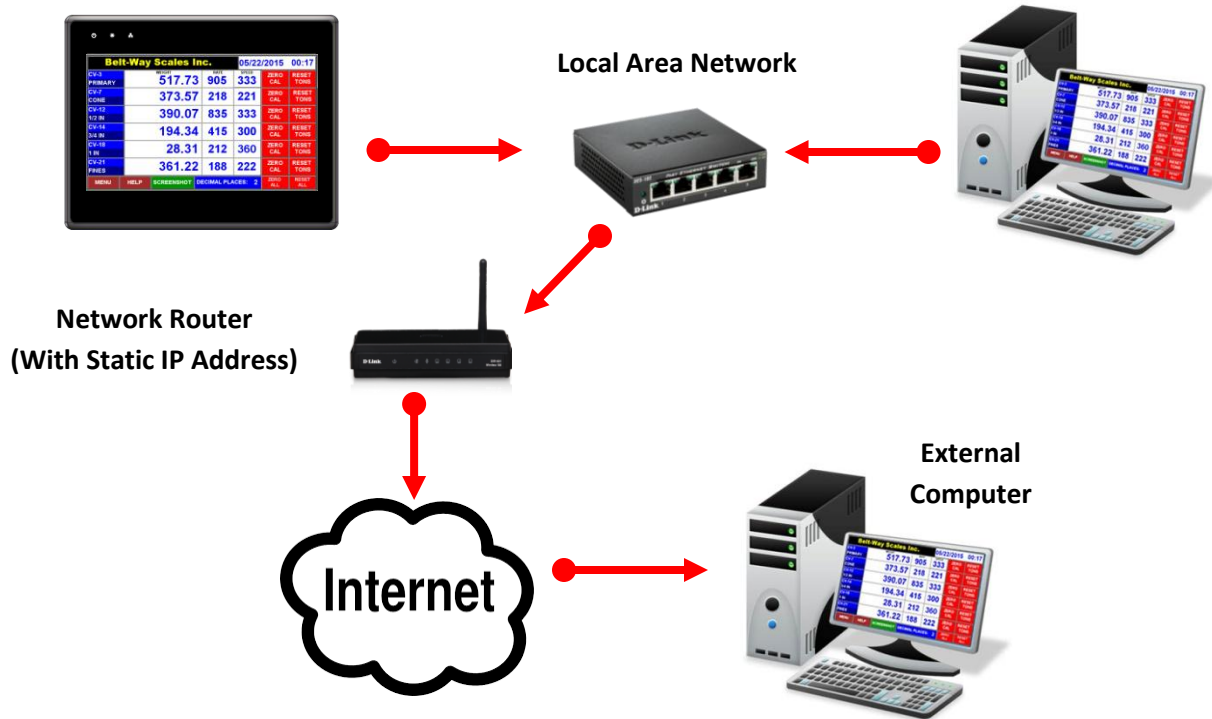
You can manipulate all features of the display through the VNC Viewer.



VNC Viewer Instructions

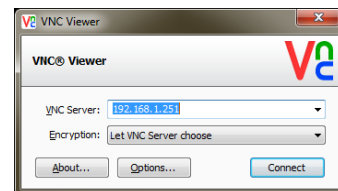
Example 2:

Local Area Network And Internet Access

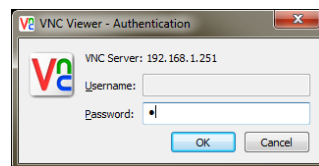


The router must be configured to port forward VNC Viewer connection requests from the external computer to the Remote Display. VNC Viewer uses port 5900. Belt-Way Scales doesn't offer support for router configuration! Ask your IT department for help. A maximum of two local or remote computers can monitor a single remote display at the same time.

Step 1: Start the VNC Viewer and enter the PUBLIC IP address of the NETWORK ROUTER, NOT THE REMOTE DISPLAY!
THE IP ADDRESS WILL CHANGE PERIODICALLY IF IT IS DYNAMIC INSTEAD OF STATIC.



Step 2: Enter the default password of "1".



Step 3: VNC Viewer will start.

You can manipulate all features of the display through the VNC Viewer.

