



2XX-OU

CHECKWEIGHER LIGHT BAR

INSTALLATION MANUAL



8200-M119-O1 Rev-B 203 E. Daugherty, Webb City, MO 64870 USA
09/12 Ph: 417-673-4631 • Fax: 417-673-2153
www.cardinalscale.com

Printed in USA

Technical Support: Ph: 866-254-8261 • tech@cardet.com

STATIC ELECTRICITY PRECAUTION



CAUTION! This device contains static sensitive circuit cards and components. Improper handling of these devices or printed circuit cards can result in damage to or destruction of the component or card. Such actual and/or consequential damage IS NOT covered under warranty and is the responsibility of the device owner. Electronic components must be handled only by qualified electronic technicians who follow the guidelines listed below:



ATTENTION! ALWAYS use a properly grounded wrist strap when handling, removing or installing electronic circuit cards or components. Make certain that the wrist strap ground lead is securely attached to an adequate ground. If you are uncertain of the quality of the ground, you should consult a licensed electrician.

ALWAYS handle printed circuit card assemblies by the outermost edges. NEVER touch the components, component leads or connectors.



ALWAYS observe warning labels on static protective bags and packaging and NEVER remove the card or component from the packaging until ready for use.

ALWAYS store and transport electronic printed circuit cards and components in anti-static protective bags or packaging.

FCC COMPLIANCE STATEMENT

This equipment generates, uses and can radiate radio frequency and if not installed and used in accordance with the instruction manual, may cause interference to radio communications. It has been tested and found to comply with the limits for a Class A computing device pursuant to Subpart J of Part 15 of FCC rules, which are designed to provide reasonable protection against such interference when operated in a commercial environment. Operation of this equipment in a residential area may cause interference in which case the user will be responsible to take whatever measures necessary to correct the interference.

You may find the booklet "How to Identify and Resolve Radio TV Interference Problems" prepared by the Federal Communications Commission helpful. It is available from the U.S. Government Printing Office, Washington, D.C. 20402, Stock No. 001-000-00315-4.

COPYRIGHT

All rights reserved. Reproduction or use, without expressed written permission, of editorial or pictorial content, in any manner, is prohibited. No patent liability is assumed with respect to the use of the information contained herein.

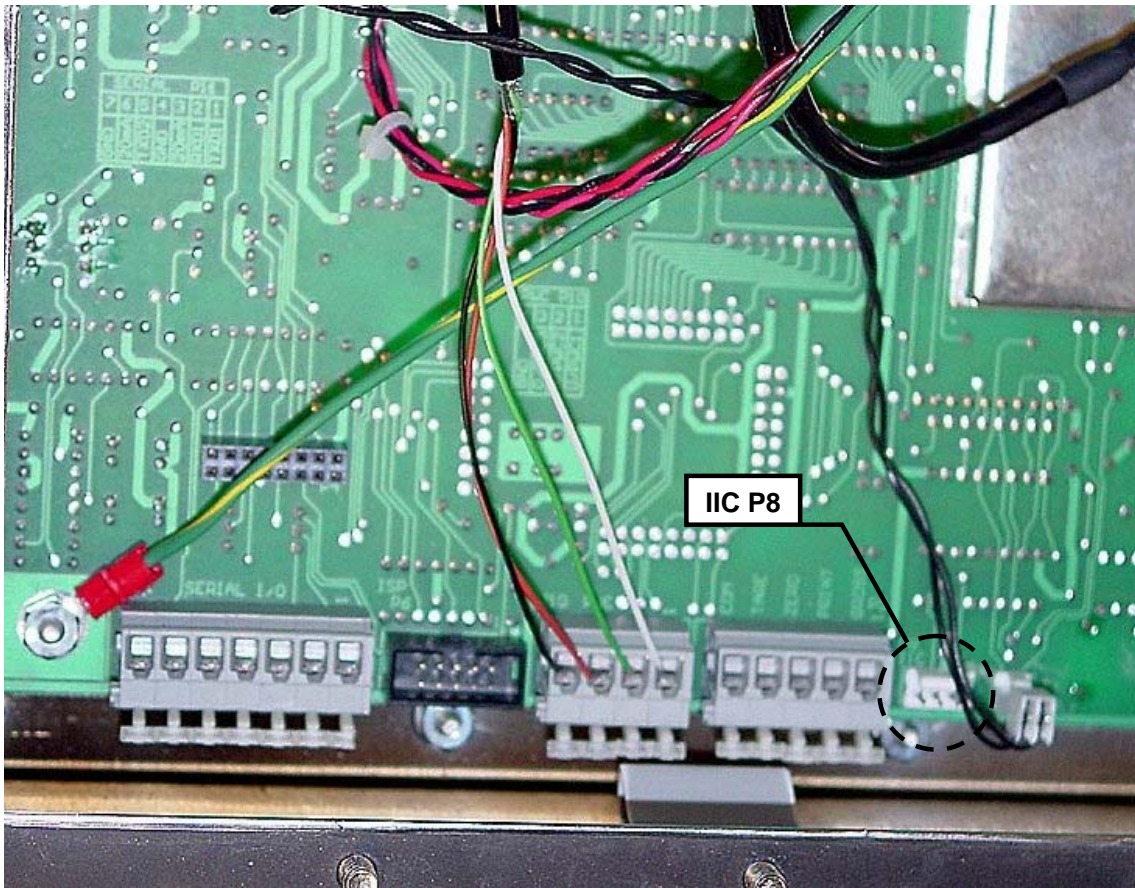
DISCLAIMER

While every precaution has been taken in the preparation of this manual, the Seller assumes no responsibility for errors or omissions. Neither is any liability assumed for damages resulting from use of the information contained herein. All instructions and diagrams have been checked for accuracy and ease of application; however, success and safety in working with tools depend to a great extent upon the individual accuracy, skill and caution. For this reason the Seller is not able to guarantee the result of any procedure contained herein. Nor can they assume responsibility for any damage to property or injury to persons occasioned from the procedures. Persons engaging the procedures do so entirely at their own risk.

INSTALLATION

To Begin Installation

1. Unplug the indicator AC power cord from the AC socket-outlet.
2. Remove the three acorn nuts securing the Battery Access Cover to the bottom of the indicator and then remove the battery tray on the Model 215 or the battery (if equipped) on the Model 210.
3. After removing the battery tray or battery, remove the 12 acorn nuts securing the back panel to main housing, and then loosen a gland connector for the Light Bar cable.
4. Lift the back panel from the main housing, taking care not to stretch the cable and wires between the panel and main housing. Lay the back panel on the workbench next to the indicator.



5. On the indicator main board, locate the IIC P8 connector.
6. Note that on the 215 indicator, the battery charger is connected to the IIC bus connector. Disconnect the battery charger cable coming from the power supply cover on the back panel. This will disable the charger.

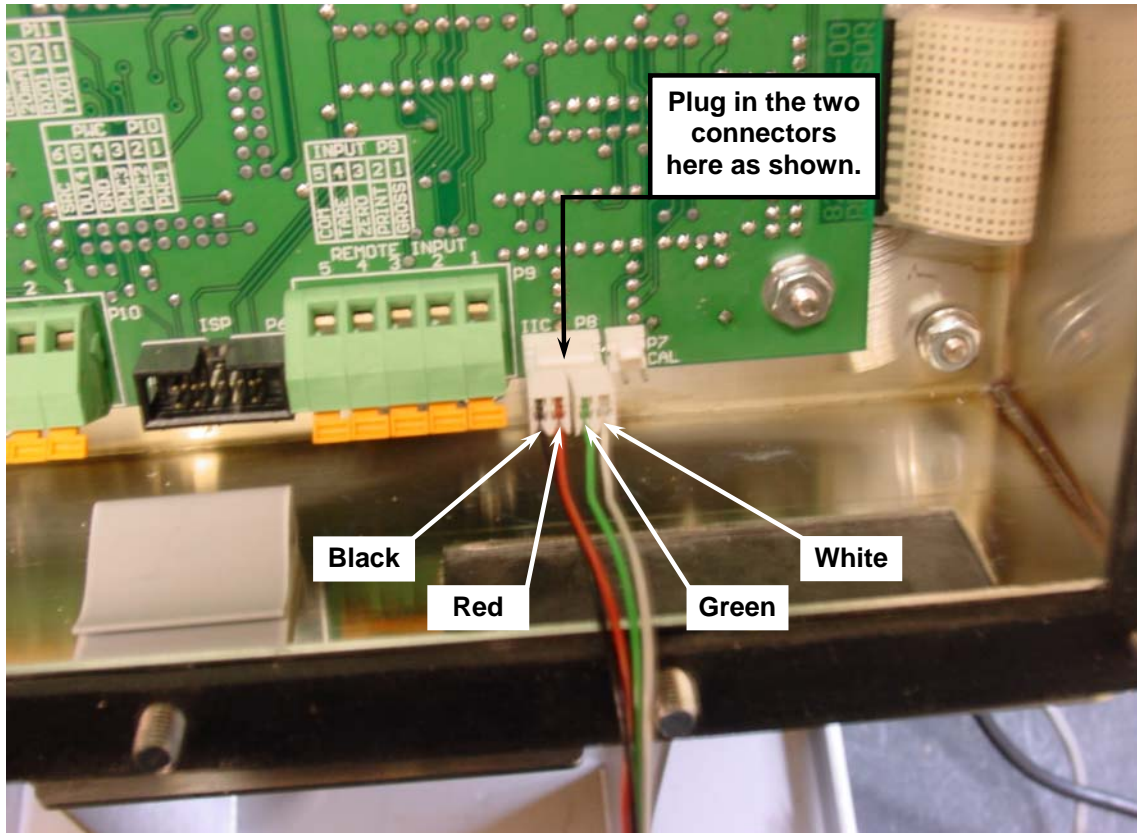


NOTE: Battery charging and the 2XX-OU are mutually exclusive. Only one can work at a time in the 215 indicator.

INSTALLATION, CONT.

Cable Installation

1. Loosen an unused cable gland connector for the light bar cable.
2. Insert the cable end with the two, 2-pin, connectors through the gland connector and into the enclosure.
3. Plug the two connectors, side-by-side into the IIC P8 connector on the main pcb as shown in the figure below.



Re-Installing the Rear Panel

After all terminations have been made, remove the excess cable from the instrument enclosure and securely tighten each of the cable gland connectors. Do not over-tighten these connectors but make certain they are snug. **DO NOT USE TOOLS!** Finger-tighten only! Insure any unused gland connectors are plugged.

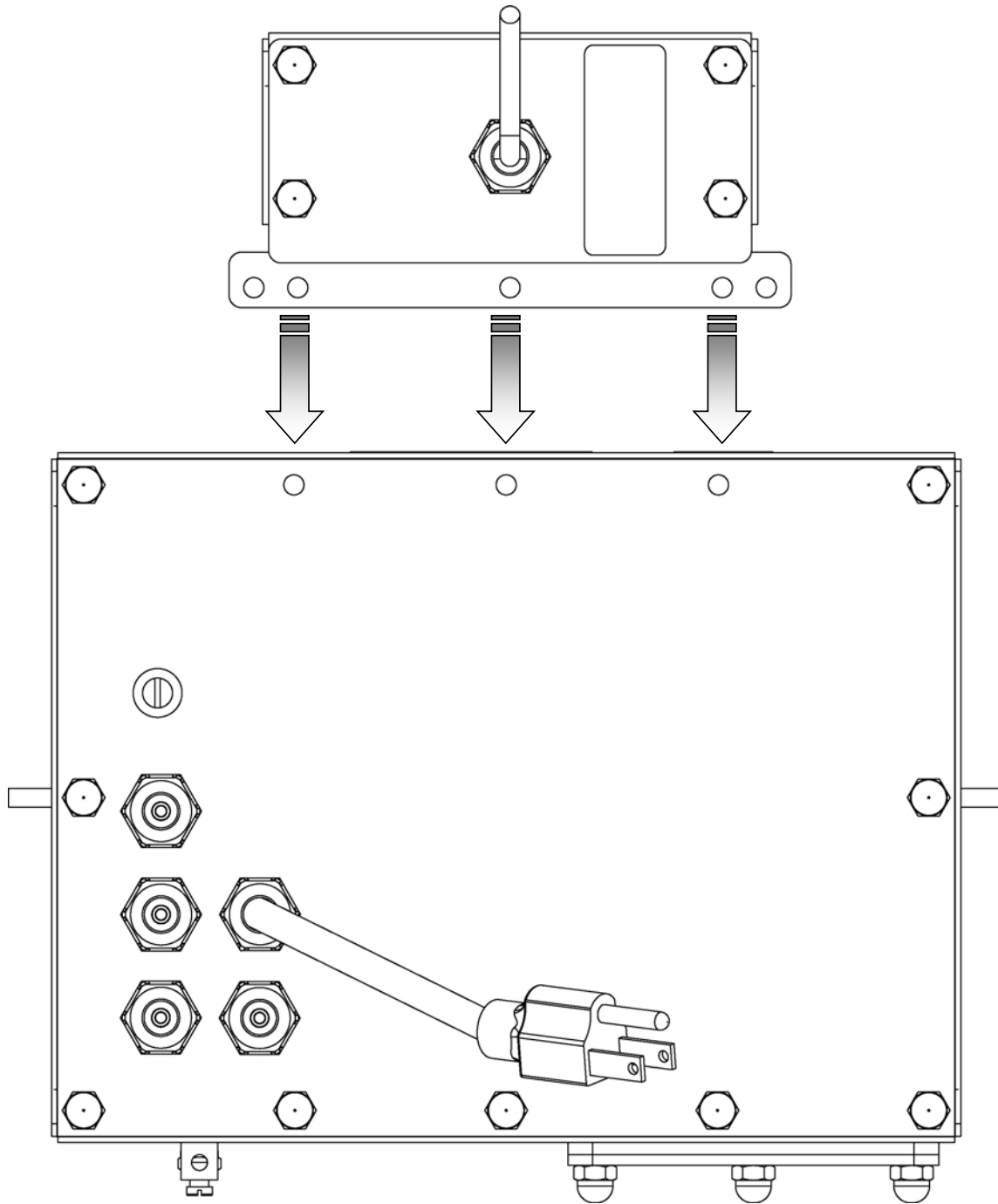
Make certain no cables or wires are exposed between the main housing and rear panel then place the rear panel onto the main housing. Secure the rear panel to the enclosure with the acorn nuts removed earlier (leave the acorn nuts off the top 3 threaded studs, refer to the figure on the next page. Finger-tighten only!

INSTALLATION, CONT.

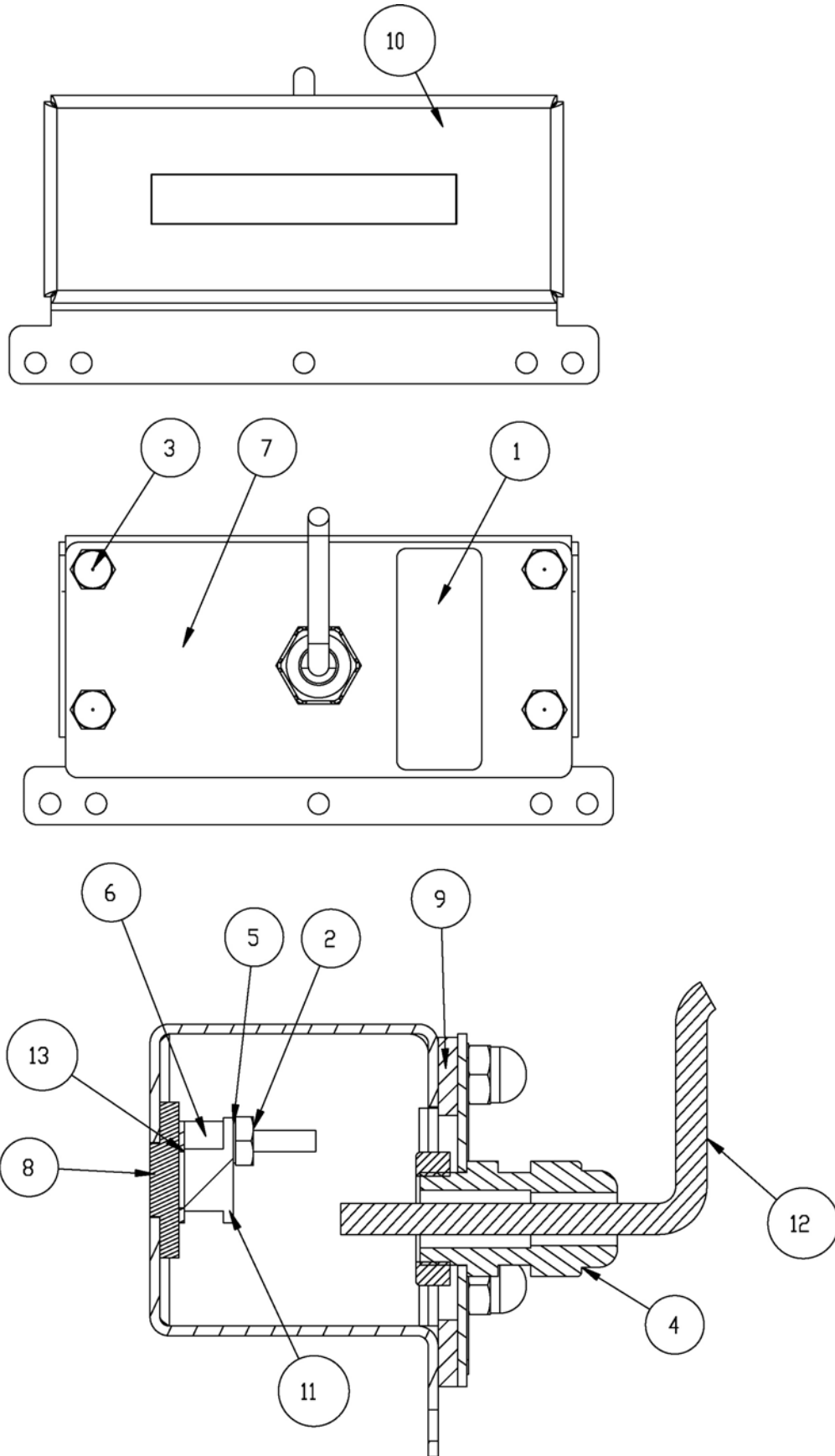
Installing the Light Bar

Referring to the figure below, place the Light Bar on the top 3 threaded studs then install and finger-tighten the acorn nuts to hold the Light Bar in place. Install and finger-tighten the remaining acorn nuts.

Following a diagonal pattern, tighten the acorn nuts, securing the back panel and Light Bar to the enclosure.



PART IDENTIFICATION



PART IDENTIFICATION

ITEM NO.	QTY	PART NO.	DESCRIPTION
1	1	593GR986	SERIAL TAG ASSEMBLY
2	2	6013-0039	NUT HEX #6-32
3	4	6013-0433	NUT HEX #10-32 ACORN SS
4	1	6610-2248	CONN GLAND .187-.312 GRIP .599 MTG BLK
5	2	6680-0004	WASHER LOCK INT. TOOTH #6 Z/P
6	2	6680-0027	SPACER (PCB) #6 X .312
7	1	8200-B108-08	REAR COVER, 2XX-OU
8	1	8200-B109-08	LENS, 2XXX-OU
9	1	8200-B110-08	GASKET, UAO
10	1	8200-B112-0A	FRONT PANEL WELDMENT, UAO
11	1	8200-B273-0A	DISPLAY BOARD, UAO
12	1	8200-B573-0A	CABLE, UAO
13	1	8200-B118-08	SCREEN

