



**WIN-DDE**  
**Dynamic Data Exchange**  
**User's Guide**



# Win-DDE 2.19

April 03, 2007

## **Specifications**

Cardinal Scale Manufacturing Company offers a complete line of digital weight indicators supported by the Win-DDE (Dynamic Data Exchange) server. Indicators can be interfaced to any type of external scale device including truck scales, tank scales, and platform scales.

Up to 20 weight indicators may be connected to a single computer running Win-DDE. The computer must be properly configured with serial ports or network hardware to allow the connections. Windows 2000 or XP must be used if more than 10 indicators will be connected.

Numerous types of weight indicators may be used with Win-DDE.

- SMA (Scale Manufacturers Association) standard protocol indicators
- 200 Series weight indicators
- 777 and 778 weight indicators
- 738 and 748 weight indicators
- Win-DDE may be configured for communications with many other weight indicators

Indicators may be connected to a computer using common connection methods

- RS232 standard serial communications ports may be used with simple cabling
- TCP/IP network protocol may be used with common Ethernet network cards, hubs, and cables.

The Win-DDE Server allows Windows DDE compatible software products to obtain information from weight indicators.

- Weight string, for example "200 LB G."
- Numeric weight. This allows accumulations or calculations.
- Scale status, "Motion", "Over Capacity", and "Below Zero" conditions.
- Additional field values may be specified.

A print capture mode allows information from an indicator printout including, ID numbers, time and date, gross, tare and net weights to be automatically sent to an Excel Spreadsheet.

Commands may also be sent to weight indicators.

- Zero Scale
- Switch between LBS/KGS

Many Windows programs support DDE, including:

- Industrial control and monitoring: Rockwell Automation RSView, AutomationDirect  
LookoutDirect, Wonderware InTouch
- Database: Microsoft Access, Microsoft FoxPro
- Spreadsheets: Microsoft Excel, Lotus 1-2-3, Novell Quattro Pro

Various configuration settings are available.

- DDE topic names, item names
- Indicator types
- Baud rate, parity, data bits, stop bits
- Continuous or on-demand communications
- Sample intervals
- Weight string format

Win-DDE digital weight indicator DDE client program is also included.

## ***Installation***

The Win-DDE software may be installed on a computer with Windows 95, 98, NT 4.0, 2000, or XP. Windows 2000 or XP is recommended for applications requiring high reliability and performance.

To begin the installation insert the "Cardinal Scale Manufacturing Company - WinWeigh WIN-DDE" CD in the CD-ROM drive of the computer.

The installation program will begin. Follow the on screen instructions to complete the installation. When completed remove the CD from the CD-ROM drive.

## ***Configure the Weight Indicator***

### **Serial Connection**

Refer to the Weight Indicator operation manual and configure the weight indicator baud rate and other communications parameters.

For a Cardinal 200 series indicator perform the following steps:

1. Press the "ON" key to turn on the indicator.
2. Press the "\*" and then the "ZERO/REVIEW" key to enter the setup mode.
3. Press "ENTER" repeatedly to step through the setup prompts until "Sio?" is displayed.
4. With "Sio?" displayed press "ENTER". The display will show "no". Press the "1/YES" key to change the display to "YES". Press "ENTER".
5. The display will show "bAUd=". Press "ENTER". The display may show "96" indicating 9600 baud. If the display does not show "96", press the "9" and then the "6" key to make the display show "96". Press "ENTER".

6. The display will show "PrtY=". Press "ENTER". The display may show "0" indicating no parity. If the display does not show "0", press the "0" key to make the display show "0". Press "ENTER".
7. The display will show "bits=". Press "ENTER". The display may show "8" indicating eight data bits. If the display does not show "8", press the "8" key to make the display show "8". Press "ENTER".
8. The display will show "StoP=". Press "ENTER". The display may show "1" indicating one stop bit. If the display does not show "1", press the "1" key to make the display show "1". Press "ENTER".
9. The display will show "Cont1=". Press "ENTER". The display may show "no" indicating on-demand data output. If the display does not show "no" press the "0/NO" key to make the display show "no". Press "ENTER".
10. The display will show "Cont2=". Press "ENTER". The display may show "no" indicating on-demand data output. If the display does not show "no" press the "0/NO" key to make the display show "no". Press "ENTER".
11. The display will show "Print?" Press "ENTER" repeatedly to step through the remaining prompts until the normal weight display returns.
12. The indicator is now configured for 9600 baud, no parity, eight data bits, one stop bit, on-demand output, SMA (Scale Manufacturers Association) format.

Continuous communications may also be used. However, be aware that if the indicator is turned on and sending continuous data to the computer during Windows startup, Windows may incorrectly interpret the data. This may cause the computer mouse to behave erratically. The serial port may not be available to Win-DDE or any Windows applications. To prevent this occurrence be sure that the weight indicator is turned off during the entire computer power on and startup process. Configuration changes may be made to the computer to allow continuous serial data during Windows startup. Please refer to the technical section of this document.

### **Network TCP/IP Connection**

Refer to the Weight Indicator operation manual and configure the weight indicator IP address and port.

## ***Connecting the Weight Indicator***

### **Serial Connection**

Connect the weight indicator to the computer. For a 200 series indicator use a 8545-B099-1A cable. For a Cardinal 738 or 748 indicator use an 8510-C304-GA cable. If the computer has a 9-pin serial port attach a 9/25 adapter, 6600-0555 to the cable. The PC end of the cable or the 9/25 adapter should be attached to one of the serial ports on the computer. The serial port must be properly configured for operation in Windows. The Control Panel / System / Device Manager may be used to verify the existence of the communications ports. The indicator end of the cable should be attached to the appropriate serial port on the weight indicator.

### **Network TCP/IP Connection**

The computer must have a properly configured network card. If the computer is connected to a group of other computers a port may be available on a network hub or switch to connect the indicator. If no ports are available it will be necessary to add a new network hub or switch to provide additional connection ports. A normal straight-through Ethernet cable can be used to connect the indicator to the hub or switch. If the indicator is to be connected directly to a network card on the computer an Ethernet crossover cable must be used.

## ***Starting the DDE Server***

DDE (Dynamic Data Exchange) is the key element to the Win-DDE software. A DDE Server is a program which provides information to other windows programs, known as client programs. The server may be started in several ways.

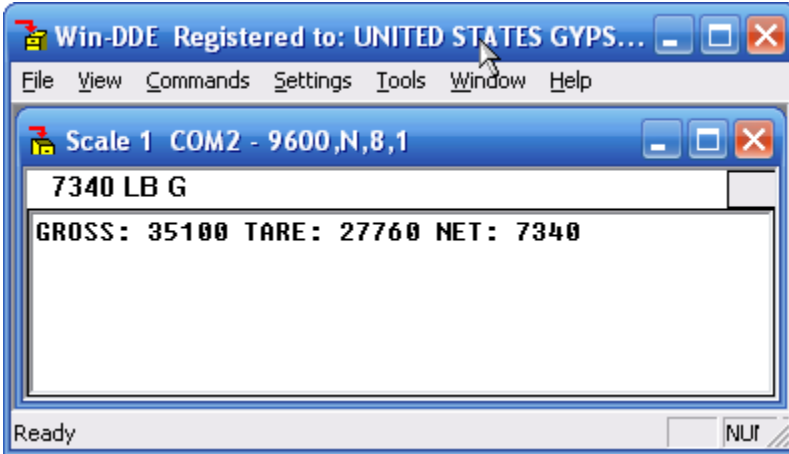
- Click "Start" and select "Programs", "WinDDE" and "WinDDE" server.
- Use "My Computer" or "Windows Explorer" to browse to the WinDDE program folder. Double-click the "WINDDE.EXE" file in the file manager or explorer.
- Run a DDE client program which has the ability to automatically start the requested DDE server.

*A special startup feature is provided. Holding the shift-key down while starting Win-DDE will cause Win-DDE to start without enabling the device communications. This may be useful if the database has incorrect device configurations for the computer. You can start WinDDE while holding the shift key, and then correct any device configuration settings.*

The Win-DDE program will start. Win-DDE may be configured to start hidden, except for a system tray icon.

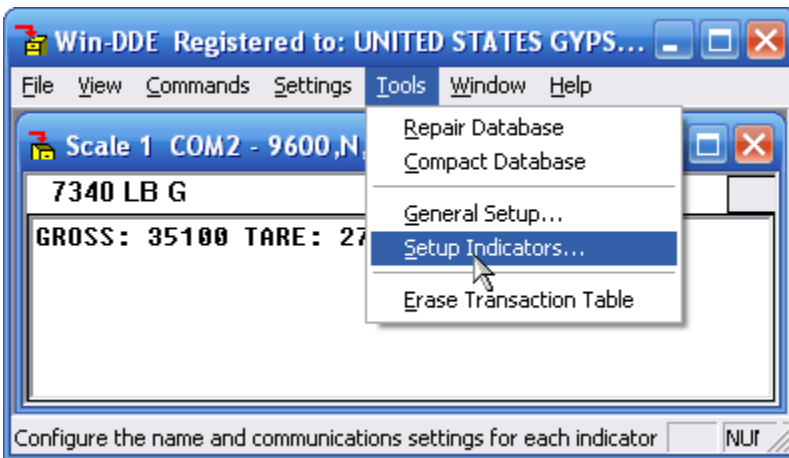


Click the “Win-DDE” icon in the system tray, usually at the bottom right of the display, to make the Win-DDE window appear.

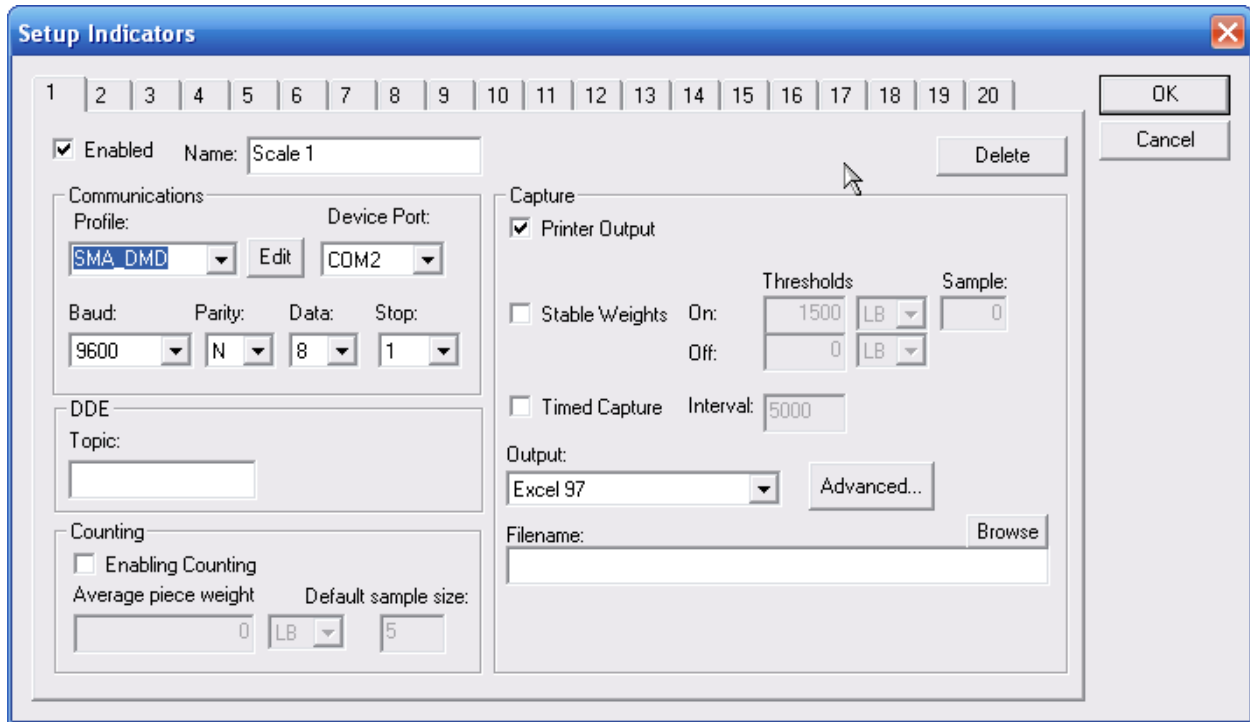


### *Configure the DDE Server*

Click “Tools” on the menu bar.



Click “Setup Indicators...”. A dialog box will appear allowing up to 20 indicators to be configured.



## 1 - 20

Click the appropriate tab “1” – “20” to specify the indicator to be configured.

## Enabled

Check the “Enabled” check box to enable the indicator.

## Name

A descriptive name may be entered for the indicator.

## COMMUNICATIONS

### Profile

For a SMA compatible indicator select the "SMA\_DMD" option for the SMA format on-demand weight. The Cardinal 200 series indicators are SMA compatible. Both receive and transmit wires must be connected for on-demand communications.

### Edit

Click the “Edit” button to modify the profile or create a new profile.

### Device Port

Select the appropriate communications port, "COM1" through "COM24" or “TCP/IP”.

### Serial

#### Baud



For the 200 series indicator configuration described above select "9600."

**Parity**

For the 200 series indicator configuration described above select "N" for no parity.

**Data**

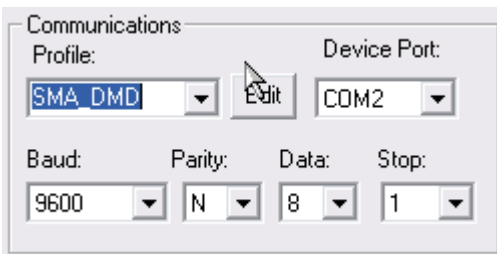
For the 200 series indicator configuration described above select "8" for eight data bits.

**Stop**

For the 200 series indicator configuration described above select "1" for one stop bit.

**TCP/IP**

To communicate with TCP/IP network indicators set the "Device Port" prompt to "TCP/IP".



**IP Address**

Enter the appropriate IP Address for the indicator.

**IP Port**

Enter the appropriate IP Port for the indicator.

**Ping Interval**

Enter an interval in seconds to ping the device periodically.

**Topic**

A DDE topic name to be used by client applications to refer to the indicator is specified here.

**COUNTING**

**Enable Counting**

Check the "Enable Counting" check box to enable the piece counting feature.

**Average Piece Weight**

Specify the weight of each item.

**Default Sample Size**

Specify the quantity of items to be used for sampling.

## **CAPTURE**

Win-DDE client applications will have access to the continuously updating weight and status information when connected to an indicator providing this data. Win-DDE may also be configured for additional capture features.

Only some indicator models such as the Cardinal 220 allow on-demand weight and printout on the same communications port.

### **Printer Output**

Check “Printer Output” to enable the Win-DDE feature of automatic printer output capture.

### **Stable Weights**

Check “Stable Weights” to enable the Win-DDE feature of automatic capture of stable weights above threshold.

#### **On Threshold**

Specify the minimum weight to capture. When a stable weight value above the “On threshold” is reached the weight and time-stamp will be recorded.

#### **Off Threshold**

Optionally specify the weight change value to determine when a weight is removed from the scale.

#### **Sample**

Specify the number of consecutive stable weight reading from the indicator required before recording the weight.

### **Timed Capture**

Check “Timed Capture” to enable the Win-DDE feature of automatic capture of current weight on time intervals.

#### **Interval**

Specify the time interval in milliseconds. A Windows timer is used so this is may not be real-time accuracy.

### **Output**

Specify “Excel 97”, “Excel 2000”, or “Excel 2002” to indicate the appropriate version of Microsoft Excel for the automatic capture feature.

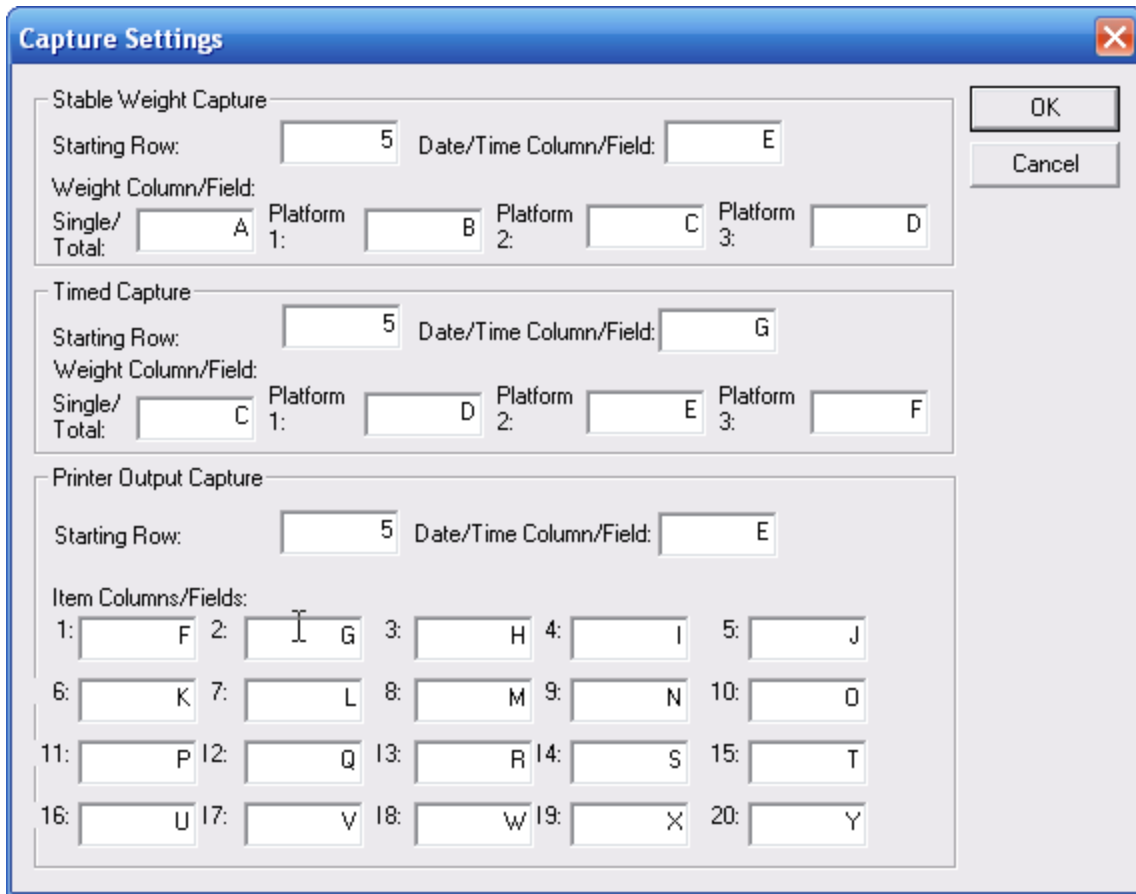
### **Filename**

Leave this blank to have WinDDE create a new Excel file when starting, or provide a filename for WinDDE to open an existing Excel spreadsheet. The spreadsheet should not already be open when WinDDE starts or WinDDE will open an additional copy of it, which will be read only, so WinDDE will not be able to update it.

An Excel spreadsheet may be created as a template with headings and formulas. WinDDE may be configured to use the template file and create a new filename based on the date. When the date changes while Win-DDE is running the current Excel file is saved and the template file is again copied to create a new file for the new date. To configure this behavior save the blank excel file (header text may be in the file) to a specific path such as: "C:\WT.XLS". Specify the capture filename as "C:\WT\*" (Do not include the ".XLS") When WinDDE is started the template will be copied to a date based filename such as "C:\WT\_2004\_02\_18.XLS". When the date changes the file will be closed, and a new file "C:\WT\_2004\_02\_19.XLS" will be created.

**Advanced**

Click the "Advanced" button for advanced capture options.



For each type of capture the spreadsheet columns and starting row may be specified. If a Date/Time column is specified WinDDE will add a date/time stamp from the computer to the output. Click "OK" to accept any changes and return to the "Setup Indicators" dialog box.

Click the "OK" button to end the "Setup Indicators" dialog box and resume normal server operation.

## Indicator Profiles

**Indicator Profile**

ID: SMA.DMD

On Demand:  On Demand Enquiry: %0AW%0D Interval (ms): 500

Weight Information

Status: OV BZ MO CZ Units: TN LB KG MT TON Mode: G T N

Pos: 1 Chr: 0 Pos: 16 Chr: t Pos: 3 Chr: G

General String Information

Start Chrs: %0A End Chrs: %0D

Min Len: 10 Max Len: 30

Wt. Start Pos: 9 Wt. End Pos: 15

DP Offset

Multiple Platform:

	Start Pos:	End Pos:
1:	0	0
2:	0	0
3:	0	0

Indicator Command Codes

ZERO UNITS GROSS TARE NET OP1 OP2

Data: %0AZ%0D

Print Capture

Start Chrs: %0D End Chrs: Timeout (ms): 1000

Delimiters: %0D%0A  Count Empty Items

1 2 3 4 5 6 7 8 9 10

Find: Pos: 0 Len: 7

Flag: 101 DDE Item: GROSS

Check: Response - Good: Response - Bad:

Buttons: OK, Cancel, Delete

### ID

Change the "ID" to make a copy of the current profile.

### On-demand

Check the "On-demand" check box to specify that the indicator is set for on-demand communications.

### Enquiry

Set the "Enquiry" code that the computer will send to the indicator to request the on-demand weight. For SMA format this is <LF>W<CR> represented as %0AW%0D (% - indicates the next two characters are a hexadecimal code, 0A hex is a line-feed, 0D hex is a carriage return).

**Interval (ms)**

Set the “Interval” for on-demand requests in milliseconds. 300 milliseconds is approximately three times a second.

**Start Chrs**

Set the character that is the last character sent from the indicator for a weight record. For SMA format this is a carriage return, represented as %0D.

**End Chrs**

Set the character that is the first character sent from the indicator for a weight record. For SMA format this is a line-feed, represented as %0A.

**Min Len**

Set the minimum length for a weight record.

**Max Len**

Set the maximum length for a weight record.

**Wt Start Pos**

Set the position in the record where the weight value starts.

**Wt End Pos**

Set the position in the record where the weight value ends.

**DP Offset**

Check “DP Offset” if the status positions are one character further to the right when the weight value contains a decimal point.

**Status (OV, BZ, MO, CZ)**

Click the appropriate tab to set the status position and character for each condition over capacity, below zero, motion, and center of zero.

**Units (TN, LB, KG, MT, TON)**

Click the appropriate tab to set the units position and character for each unit, short tons, pounds, kilograms, metric tons, or long tons.

**Mode (G, T, N)**

Click the appropriate tab to set the mode position and character for each mode, gross, tare, or net.

**Indicator Command Codes (ZERO, UNITS, GROSS, TARE, NET, OP1, ...)**

Click the appropriate tab to set the codes for each indicator command such as “Zero” and “Units”.

**Print Capture**

**Start Chrs:**

Specify the starting characters to indicate the character to start receiving a printout from the indicator.

**End Chrs:**

Specify the ending characters to indicate the end of a printout. Leave this field blank to indicate a timeout method of determine the end of the printout.

**1 – 10**

Click the appropriate tab to specify the printout field capture item to be configured.

**Find:**

Specify the data string to search for to indicate the item in the printout.

**Pos:**

Specify the position offset for the printout item.

**Len:**

Specify the length for the printout item.

**Flg:**

Specify the flag code for parsing the item. 0 = the item content precedes the find data. 5 = the item info follows the find data and continues up to the next carriage return. 101 and above indicates that the item should be a specific line of printout, 101 being line 1, 102 being line2, etc... The "Pos" and "Len" values may be set to 0 to indicate a capture of the entire line, or these values may be used to specify the data to be read from the line.

**DDE Item:**

Specify the item name for the printout item.

**Delete:**

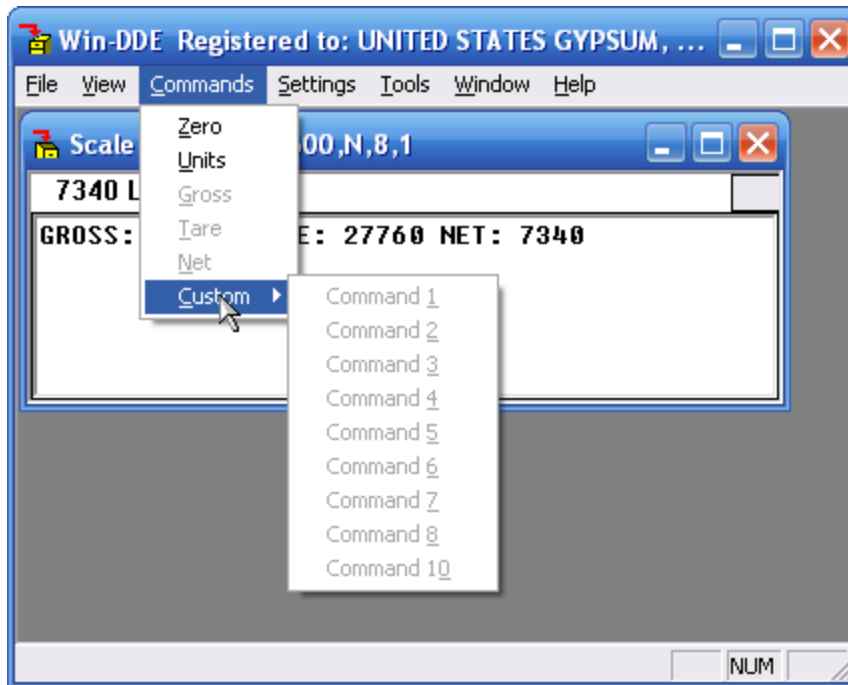
Click the "Delete" button to delete the profile from the database. Do not delete the standard profiles such as SMA\_DMD and SMA\_CONT.

***DDE Server Features***

Windows DDE applications may make requests for data from the server. DDE applications may also issue commands to the server.

**Commands**

The “Commands” menu option is used to send commands to the weight indicator. Refer to the indicator profile to configure the data to be sent to the indicator for each command. Any commands that are not defined in the indicator profile will be disabled (shown in gray).



Click “Zero” to send the zero command to the weight indicator. Some models of weight indicators do not support the capability of zeroing from the computer so this command may be ignored.

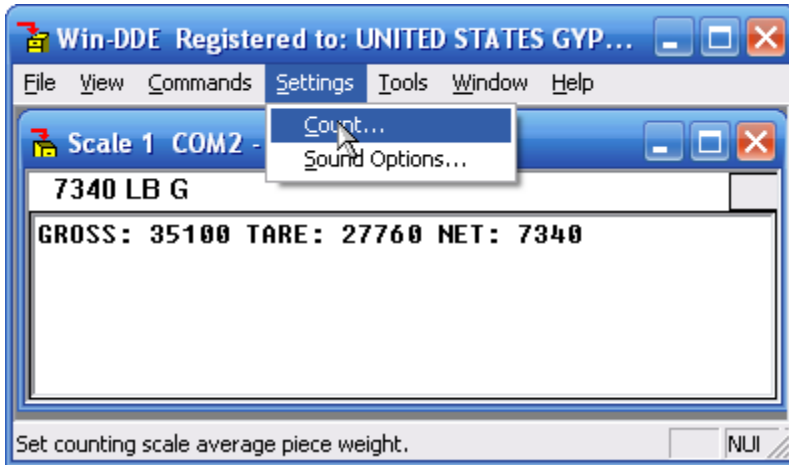
Click “Units” to switch the weight indicator between pounds and kilograms. Some models of weight indicators do not support this capability so this command may be ignored.

Click “Gross”, “Tare”, or “Net” to switch the weight indicator mode. Some models of weight indicators do not support this capability so this command may be ignored.

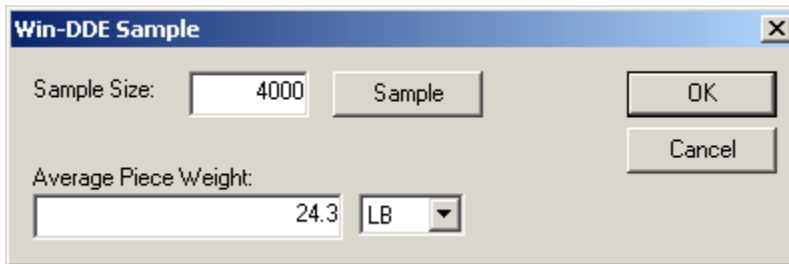
Click “Command 1” through “Command 10” to send custom commands to the indicator.

### **Count**

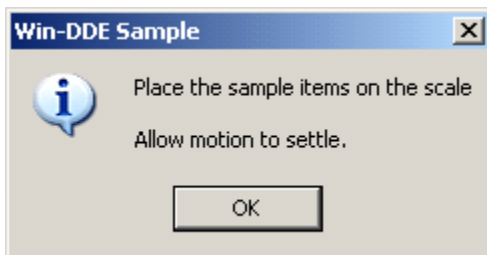
Click the “Settings” menu.



Click “Count...” to show the count sample dialog box.



A number of items may be placed on the scale. Type the appropriate number in the “Sample Size:” prompt. A greater number of items will program greater counting accuracy. The items must have a uniform weight. Click the “Sample” button. The display will show:



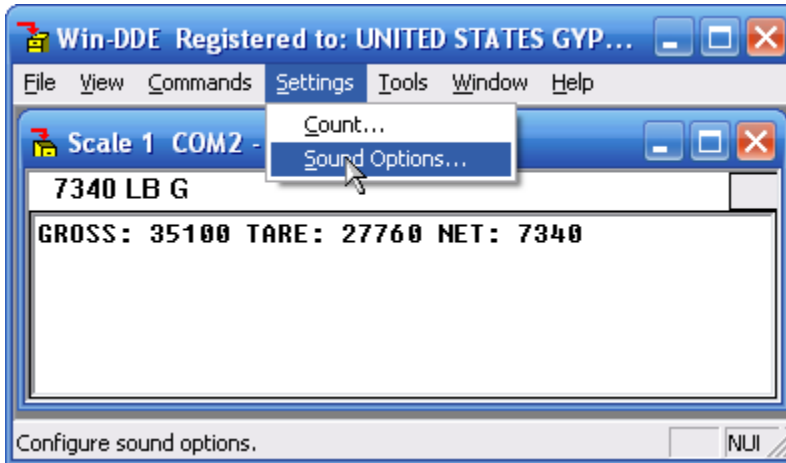
Place the correct number of sample items on the scale. Wait for the scale to stabilize and click the “OK” button.

The “Average Piece Weight” prompt will automatically be set. This is performed mathematically by dividing the current scale weight by the number of items. The “Average Piece Weight” prompt may also be altered by typing in a desired value. Click the “OK” button to accept the values.

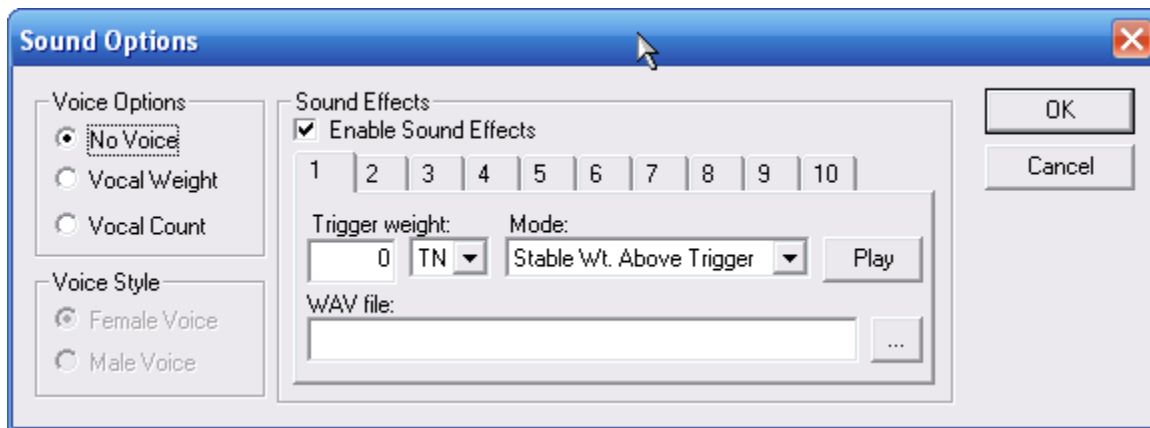
### Setup

The “Settings” menu option provides a “Sound Options” selection.





Click “Sound Options...” to display the sound options dialog box.



Your computer must be equipped with a sound card and speakers for sound options to function.

No Voice

The DDE Server will not speak.

Vocal Weight

The DDE server will speak the weight.

Vocal Count

The DDE server will speak the count.

If either “Vocal Weight” or “Vocal Count” is specified an additional selection for “Female Voice” or “Male Voice” is available.

Enable Sound Effects

The “Enable Sound Effects” check box should be checked to allow the The DDE Server will play up to 10 sounds in the form of wav files. For example a particular wav file may play when a weight of 24000 pounds is reached. Another wav file may play when a weight of 78000 pounds of the scale capacity is reached.

### Number tab

Use the “Number” tab to specify the sound to edit from “1” through “10”. The prompts which follow will indicate the settings for the specified sound.

### Trigger Weight

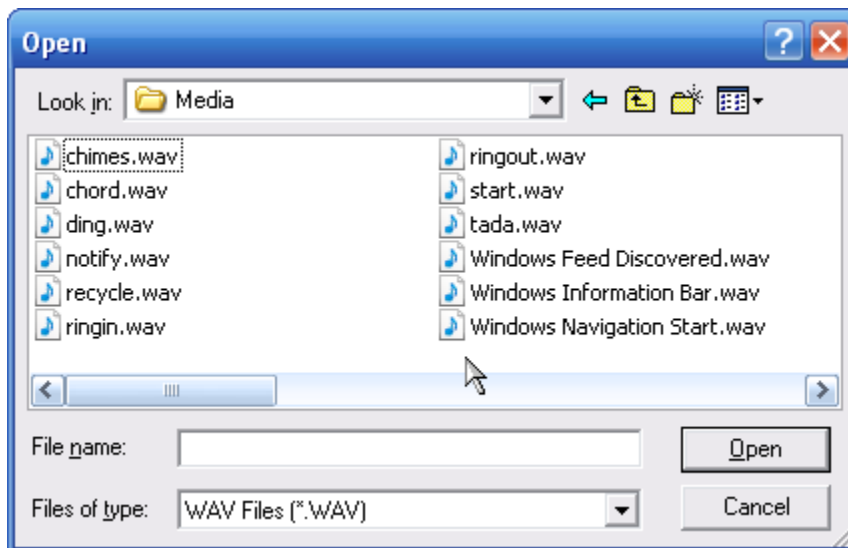
Specify the weight value for the sound to play. The trigger weights should be in order, so that sound 1 is a lighter trigger weight, than sound 2.

### Mode

The mode for each sound may be specified as “Stable Wt. Above Trigger”, “Weighing Up”, or “Weighing Down”. Sounds specified as “Stable Wt. Above Trigger” will play only when the weight is stable and above the trigger weight. If more than one sound fits the condition when the weight stabilizes only sound with the highest trigger value is played. Sounds configured for “Weighing Up” or “Weighing Down” will play when the weight passes the trigger weight either weighing up or weighing down, as appropriate.

### WAV File

The full path should be specified to the WAV file to play. The “...” button may be clicked to browse to a WAV file. In Microsoft Windows XP for the list of sounds shown below navigate to C:\Windows\Media



### Play

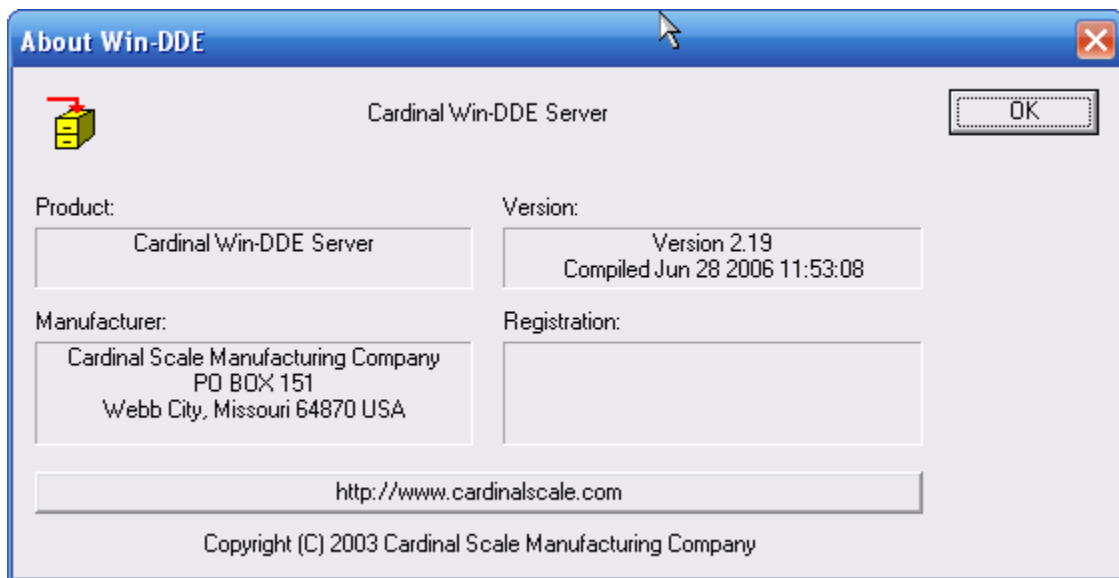
The “Play” button may be clicked to hear the sound immediately.

## Help

The “Help” menu option is used to access the “About box”.



Click “About...” to display an about box which will give the version of the DDE server.

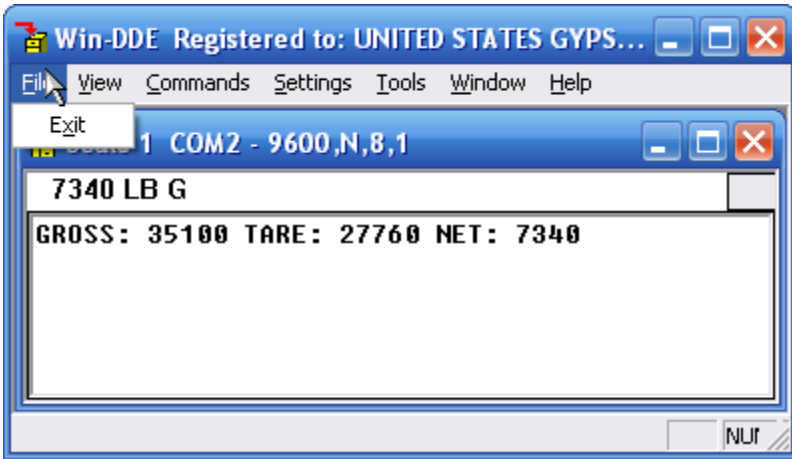


The “<http://www.cardinalscale.com>” button may be clicked to open the Cardinal Scale main web page if the computer has internet access.

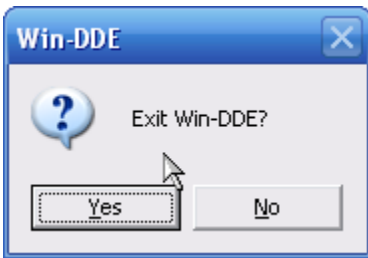
Click the “OK” button to return to main Win-DDE screen.

## File

The “File” menu option is used to access the “Exit” function.



Click “Exit” to close the DDE server or hide the server window.



Click “Yes” to exit the Win-DDE server, or click “No” to keep Win-DDE running, but hide the server Window.

Click the Win-DDE icon in the system tray to show the server window when it is hidden.



### ***Reading information from the server***

Three pieces of data must be specified by a DDE client program before any information can be obtained from a DDE server.

- Application or Service - This is generally the program name, "WINDDE".
- Topic - The default topic name for WinDDE indicator one is "SCALE".
- Item - Several different item names are provided. Refer to the chart below:

ITEM	TYPE	DESCRIPTION
------	------	-------------

STR	String	Weight string, for example, "40500 LB G MO."
WT	Number (Double)	Numeric weight, for example, 40500.
STAT	String	" " – Normal weight, "OC" – Over Capacity, "BZ" – Below Zero, "MO" – Motion, or "CZ" – Center-of-Zero.
INFO	String	Win-DDE server version string (similar to): "Win-DDE Server Version 2.00 Compiled: Mar 13 2003 15:23:12"
OC	Number (Boolean)	1 – Over Capacity, 0 – Not Over Capacity
BZ	Number (Boolean)	1 – Below Zero, 0 – Zero or above
MO	Number (Boolean)	1 – Motion, 0 – Stable weight
CZ	Number (Boolean)	1 – Center-of-Zero, 0 – Not Center-of-Zero
UNITS	Number (Integer)	0 – Short tons, 1 – Pounds, 2 – Kilograms, 3 – Metric tons, 4 – Long tons
MODE	Number (Integer)	0 – Gross, 1 – Tare, 2 – Net
CNT	Number (Integer)	The number of items on the scale
WT1	Number (Double)	Platform 1 weight
WT2	Number (Double)	Platform 2 weight
WT3	Number (Double)	Platform 3 weight

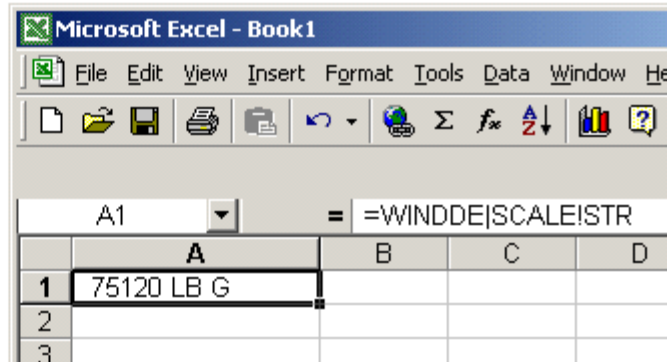
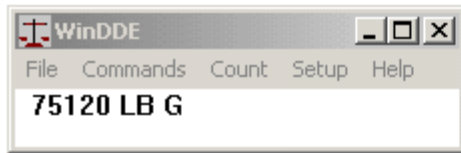
**NOTE:** The following are examples of how to obtain DDE data in several of the popular spreadsheet and database programs.

### Microsoft Excel

To read the weight string into a Microsoft Excel spreadsheet cell enter the following:

`=WINDDE|SCALE!STR`

This will provide automatically updating data in the spreadsheet cell. To read the numeric weight into the cell replace the "STR" with "WT." Using the numeric weight may be useful for calculations or charts.

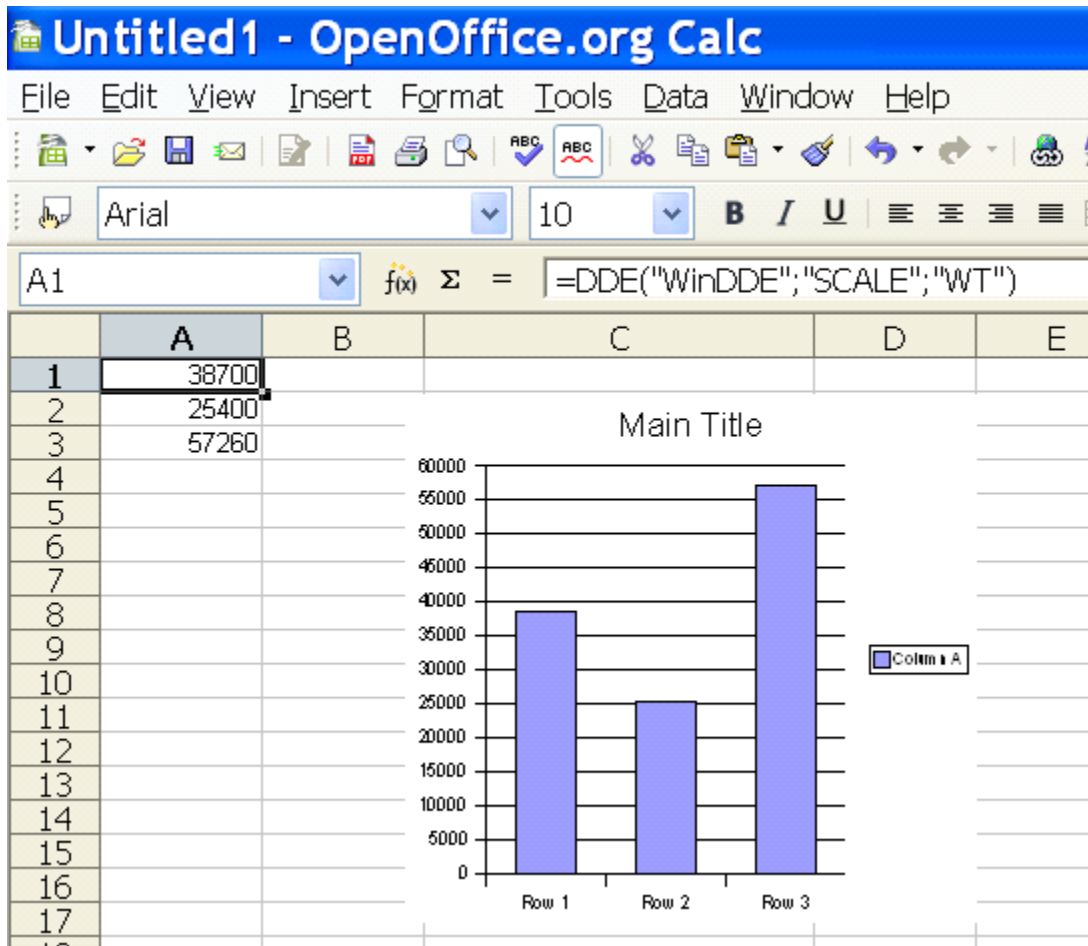


## OpenOffice Calc

To read the weight value into a OpenOffice Calc cell enter the following:

```
=DDE("WinDDE";"SCALE";"WT")
```

This will provide automatically updating data in the spreadsheet cell.



You may create a chart based on the numeric cells. As the weight changes the value in the cell and the chart display will automatically update.

### **Quattro Pro for Windows**

To read the weight string into a Quattro Pro for Windows spreadsheet cell enter the following:

```
@DDELINK([WINDDE|SCALE]"STR")
```

This will provide automatically updating data in the spreadsheet cell. To read the numeric weight into the cell replace the "STR" with "WT."

### **Lotus 1-2-3 for Windows**

For one time data access create a macro with the following commands. Make sure the cell A1 is not in use.

```
{DDE-OPEN "WINDDE","SCALE"}  
{DDE-REQUEST A1,"STR"}  
{DDE-CLOSE}
```

Run the macro. It will insert the current weight string into the cell A1. Note, the data will not update automatically.

For automatically updating data create three macros. Create the first macro starting at cell A3.

```
{DDE-OPEN "WINDDE","SCALE"}  
{DDE-ADVISE A9,"STR"}
```

This macro starts the communications. The second line sets the communications mode to advise of changes in the data and run the macro at cell A9 when the data changes. Create the second macro at cell A9.

```
{DDE-REQUEST A1,"STR"}
```

This macro is called automatically when the item, "STR", changes. The macro requests the information from the server and places the data in cell A1. Create a third macro at cell A12.

```
{DDE-CLOSE}
```

Run this macro to stop the communications.

## Microsoft Access

A simple way to obtain DDE data in Microsoft Access is to create a form. Within the form create a text display box. In the properties setting for the text box select the "Control Source." Type the following:

```
=DDE("WINDDE", "SCALE", "STR")
```

This will make the weight string appear in the text box when the form is opened. This method will only obtain the information when the form is opened. The display will not update automatically. Access provides several commands that can be used for DDE communications. You may create a button on a form to zero the scale. Create an event procedure for the button as follows:

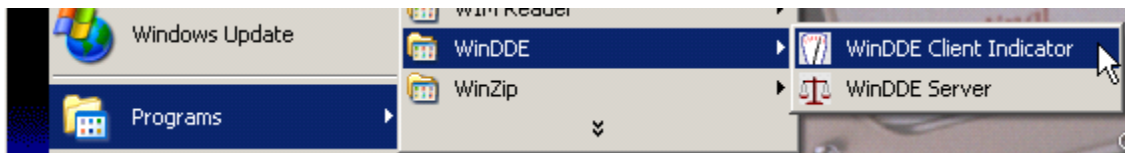
```
Sub Zero_Click ()  
  
On Error Resume Next  
Dim chl  
chl = DDEInitiate("WINDDE", "SCALE")  
DDEExecute chl, "Zero"  
DDETerminate chl  
  
End Sub
```

The Win-DDE Server responds to the "Zero" command by zeroing the indicator if it is in zero range. The command, "Switch Lb/Kg" may also be sent to the server to switch between pounds and kilograms.

## ***Win-DDE Weight Indicator***

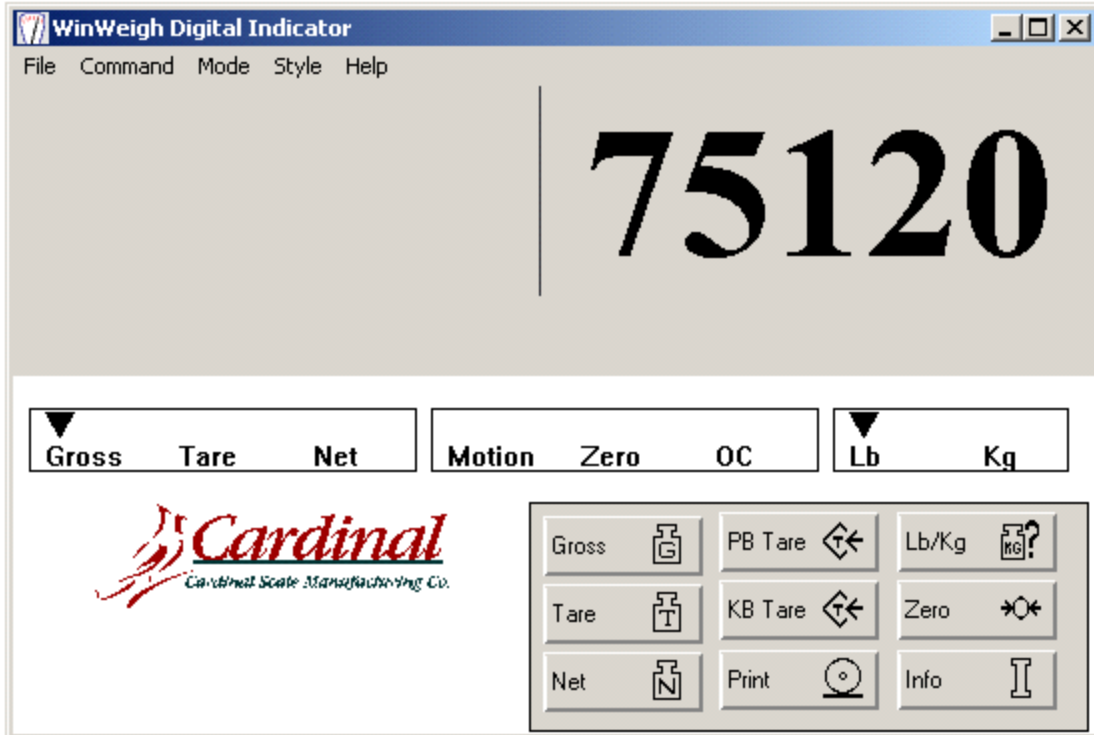
A DDE client program "Win-DDE Weight Indicator" is provided with the "Win-DDE" server. The program provides simple weight indicator functions on the computer. The Win-DDE server may be used without running this program.

To start the "Start" button on the task bar. Select "Programs", "WinDDE", and click "WinDDE Client Indicator."



The weight indicator will appear.

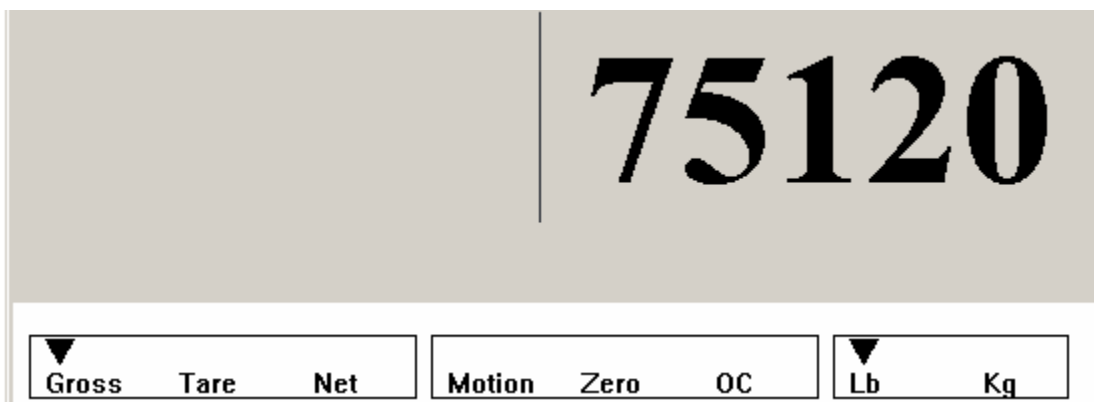




The display shows a menu bar across the top of the window. The weight display is below the menu bar. Status indicators are placed below the weight display to show various conditions. A keypad for general scale functions is at the bottom right side of the window.

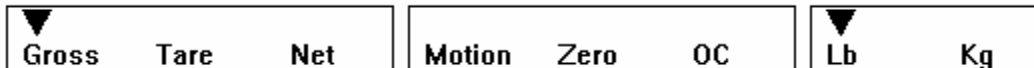
## DISPLAY

This display shows the gross, tare, or net weight value.



## STATUS INDICATORS

The status indicators show the condition of the indicator.



### Gross, Tare, Net

An arrow points to the Gross, Tare, or Net label to show the mode the indicator is in.

### Motion

An arrow is visible above the Motion label when the indicator is in motion.

### Zero

An arrow is visible above the Zero label when the gross weight is at zero.

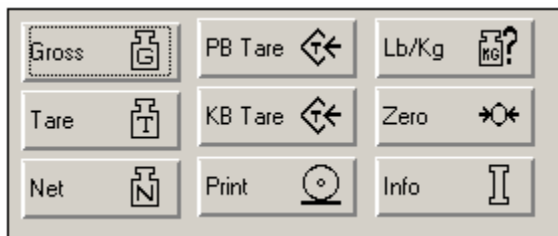
### OC

An arrow is visible above the OC label when the indicator is over capacity.

### Lb/Kg

An arrow points to Lb or Kg to show whether the indicator is displaying the weight in pounds or kilograms.

## KEYPAD



### Gross

The Gross key places the indicator in Gross mode.

### Tare

The Tare key places the indicator in Tare mode.

### Net

The Net key places the indicator in Net mode.

### PB Tare

The PB Tare key performs a Push-Button Tare function. When this key is clicked the current scale weight will be placed in the Tare. The indicator will then be placed in Net mode, showing zero net.

### KB Tare

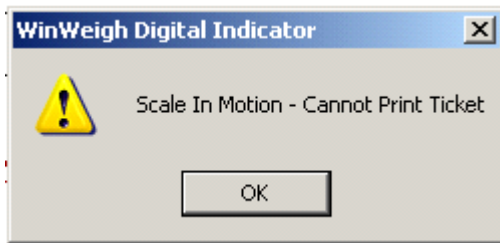
The KB TARE key perform a Keyboard Tare function. When this key is pressed an additional display window appears.



A new tare weight may be keyed in. Click **OK** to resume normal operations. The indicator will be placed in the Net mode.

### Print

Pressing the **Print** key will cause a ticket to be printed using the default Windows printer. If the indicator is in motion the display will show:



Click **OK**. When motion ceases, click the **Print** button again to print the ticket.

**WinWeigh Digital Indicator**  
**Cardinal Scale Mfg. Co.**  
**Weight Ticket:**

**Date: 06/12/02 Time: 13:47**

**Gross: 75120**  
**Tare: 10000**  
**Net: 65120**

### LB/KG

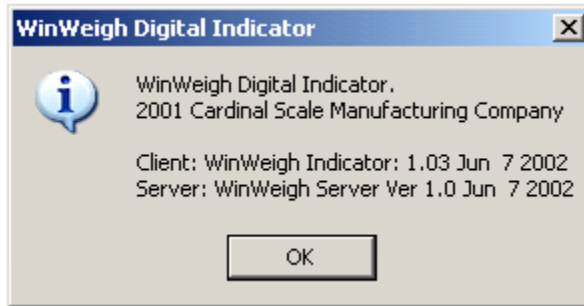
Click the **Lb/Kg** key to switch between pounds and kilograms. Any existing tare weight will be zeroed. The indicator will automatically switch to Gross mode.

## Zero

Click the **Zero** key to zero the scale, if it is within the zero range.

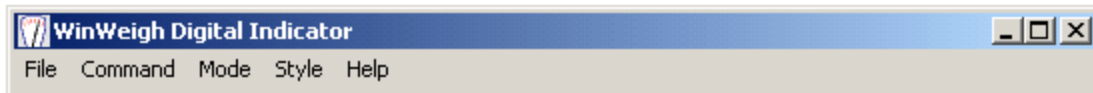
## Info

Click the **Info** key to provide a window with information about the software versions.

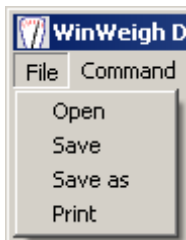


## MENU BAR

A menu bar across the top of the indicator provides several functions.



## FILE



◆ **Open** - This command displays a standard windows file-open box to allow alternate indicator configuration settings to be loaded into memory.

◆ **Save** - This command saves any changes made to the configuration settings.

◆ **Save As** - This command displays a standard windows file-save as box to allow modified configuration settings to be saved with different names.

◆ **Print** - This command performs the same function as the print command on the keypad.

## COMMAND



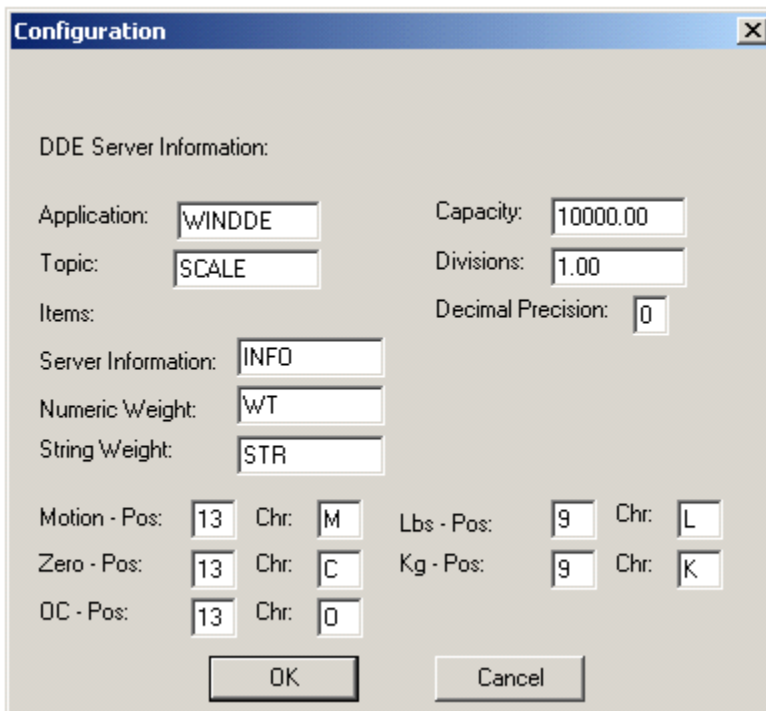
◆ **Push-Button Tare** - This command performs the same function as the **PB Tare** button on the keypad.

◆ **Keyboard Tare** - This command performs the same function as the **KB Tare** button on the keypad.

◆ **Lb/Kg** - This command performs the same function as the **Lb/Kg** button on the keypad.

◆ **Zero** - This command performs the same function as the **Zero** button on the keypad.

◆ **Configuration** - This command provides a display window to edit the configuration settings. You may change the DDE application, topic, and items names to obtain information from the server. The scale capacity, divisions, and decimal precision may be set. The weight string information may also be configured to designate the string positions and characters which represent the conditions, motion, zero, over capacity, pounds, and kilograms.

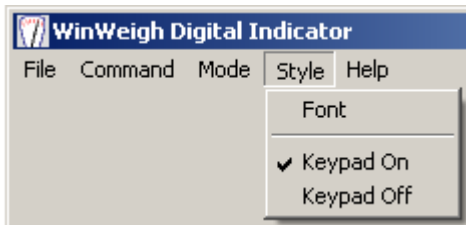


## MODE



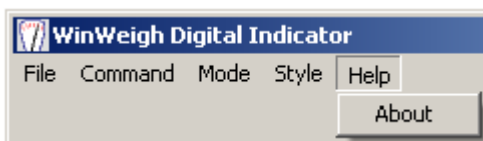
- ◆ **Gross** - This command performs the same function as the keypad **Gross** key.
- ◆ **Tare** - This command performs the same function as the keypad **Tare** key.
- ◆ **Net** - This command performs the same function as the keypad **Net** key.

## STYLE



- ◆ **Font** - This command displays a standard Windows font setting box to allow selection of the display font for the weight display window.
- ◆ **Keypad On** - This command causes the keypad and the lower half of the Indicator to appear. See "Keypad Off." below.
- ◆ **Keypad Off** - This command causes the keypad and the lower half of the display to disappear. This is useful to reduce the display space required for the indicator.

## HELP



- ◆ **About** - This command performs the same function as the "Info" button on the keypad.

## ***Win-DDE Technical Information***

The Win-DDE server communicates with DDE client applications using either XITable format or CF\_TEXT format, as requested by the client. XITable format is preferred because it provides the fastest most efficient communication.

Win-DDE is written in Microsoft Visual C++ using the Microsoft Foundation Classes. Win-DDE is a multi-threaded Win32 application providing high-performance.

Win-DDE uses Winsock 1.1 or 2.0 for TCP/IP communications.

## **Predefined Device Profile Information**

### **205CAP – Permits print capture of gross, tare, and net weight.**

#### **205 Setup –**

1. Press “\*”. The display will show “Funct=”. Press “REVIEW”.
2. The display will show “PUO=” Press “ENTER”. The display will show “no”. Press “ENTER.”
3. The display will show “SLEEP=”. Press “ENTER”. The display will show the sleep value. Press “ENTER”.
4. The display will show “A off=”. Press “ENTER”. The display will show the auto-off setting. Press “ENTER”.
5. The display will show “CLTar=” Press “ENTER”. The display will show the clear-tare setting. Press “ENTER”.
6. The display will show “Sio?” Press “ENTER”. The display will show “no”. Press the “\*” key to change the display to “YES”. Press “ENTER”.
7. The display will show “bAUd=” Press “ENTER”. The display will show the current baud rate setting. For the default 9600 baud press the “\*” key until the display shows “96”. Press “ENTER”.
8. The display will show “PrtY=” Press “ENTER”. The display will show the current parity setting. For the default no parity press the “\*” key until the display shows “0”. Press “ENTER”.
9. The display will show “BitS=” Press “ENTER”. The display will show the current data bits setting. For the default eight data bits press the “\*” key until the display shows “8”. Press “ENTER”.
10. The display will show “StoP=” Press “ENTER”. The display will show the current stop bits setting. For the default one stop bit press the “\*” key until the display shows “1”. Press “ENTER”.
11. The display will show “Cont1=” Press “ENTER”. The display will show the current setting for continuous data for serial port one. For printer capture the indicator must not be continuous. Press the “\*” key until the display shows “no”. Press “ENTER”.
12. The display will show “Cont2=” Press “ENTER”. The display will show the current setting for continuous data for serial port one. For printer capture the indicator must not be continuous. Press the “\*” key until the display shows “no”. Press “ENTER”.
13. The display will show “Print?”. Press “ENTER”. The display will show “no”. Press the “\*” key to change the display to “YES”. Press “ENTER”.
14. The display will show “Port=” Press “ENTER”. The display will show the serial port selected for printer output. Press the “\*” key to set this to the correct port to be connected to the computer. If only one serial port is wired from the 205 indicator this would usually be “1”. Press “ENTER”.

15. The display will show "GroSS=". Press "ENTER". The display will show the current tab setting for the gross weight. Press the "\*" key to change the values and the "UNITS" key to move the cursor as necessary until the display shows "3.01". Press "ENTER".
16. The display will show "tArE=". Press "ENTER". The display will show the current tab setting for the tare weight. Press the "\*" key to change the values and the "UNITS" key to move the cursor as necessary until the display shows "4.01". Press "ENTER".
17. The display will show "nET=". Press "ENTER". The display will show the current tab setting for the net weight. Press the "\*" key to change the values and the "UNITS" key to move the cursor as necessary until the display shows "5.01". Press "ENTER".
17. The display will show "G ACC=". Press "ENTER". The display will show the current tab setting for the gross accumulator. Press the "\*" key to change the values and the "UNITS" key to move the cursor as necessary until the display shows "0.00". Press "ENTER".
17. The display will show "n ACC=". Press "ENTER". The display will show the current tab setting for the net accumulator. Press the "\*" key to change the values and the "UNITS" key to move the cursor as necessary until the display shows "0.00". Press "ENTER".
17. The display will show "CrLF=". Press "ENTER". The display will show the current setting for carriage return line feed. Press the "\*" key to until the display shows "YES". Press "ENTER".
17. The display will show "EoP=". Press "ENTER". The display will show the current setting for end of print. Press the "\*" key to until the display shows "0". Press "ENTER".

1. Press "\*" and "PRINT" to set the print format. The display shows "Prt="
2. Press "ENTER". The display will show the current print format. Press "\*" until this is "0". Press "ENTER".

## **210CAP – Permits print capture of gross, tare, and net weight.**

### **210 Setup –**

1. Press "\*". The display will show "Funct=". Press "REVIEW".
2. The display will show "PUO=" Press "ENTER". The display will show "no". Press "ENTER."
2. The display will show "td=" Press "ENTER". The display will show "12". Press "ENTER."
2. The display will show "d oUt=" Press "ENTER". The display will show "0". Press "ENTER."
3. The display will show "SLEEP=". Press "ENTER". The display will show the sleep value. Press "ENTER".
4. The display will show "A off=". Press "ENTER". The display will show the auto-off setting. Press "ENTER".
5. The display will show "CLTar=" Press "ENTER". The display will show the clear-tare setting. Press "ENTER".



6. The display will show "Sio?" Press "ENTER". The display will show "no". Press the "1/YES" key to change the display to "YES". Press "ENTER".
7. The display will show "bAUd=" Press "ENTER". The display will show the current baud rate setting. For the default 9600 baud press the "9" and "6" key so that the display shows "96". Press "ENTER".
8. The display will show "PrtY=" Press "ENTER". The display will show the current parity setting. For the default no parity press the "0" key so that the display shows "0". Press "ENTER".
9. The display will show "BitS=" Press "ENTER". The display will show the current data bits setting. For the default eight data bits press the "8" key so that the display shows "8". Press "ENTER".
10. The display will show "StoP=" Press "ENTER". The display will show the current stop bits setting. For the default one stop bit press the "1" key so that the display shows "1". Press "ENTER".
11. The display will show "Cont1=" Press "ENTER". The display will show the current setting for continuous data for serial port one. For printer capture the indicator must not be continuous. Press the "0/NO" key so that the display shows "no". Press "ENTER".
12. The display will show "Cont2=" Press "ENTER". The display will show the current setting for continuous data for serial port two. For printer capture the indicator must not be continuous. Press the "0/NO" key so that the display shows "no". Press "ENTER".
13. The display will show "Print?". Press "ENTER". The display will show "no". Press the "1/YES" key to change the display to "YES". Press "ENTER".
14. The display will show "Port=" Press "ENTER". The display will show the serial port selected for printer output. Press the "1" or "2" key to set this to the correct port to be connected to the computer. If only one serial port is wired from the 210 indicator this would usually be "1". Press "ENTER".
15. The display will show "HoUr=" Press "ENTER". The display will show the current tab setting for the time. Press the "0" key to change the to "0.00" so that the time is not provided in the output. Press "ENTER".
15. The display will show "dAtE=" Press "ENTER". The display will show the current tab setting for the date. Press the "0" key to change the display to "0.00" so that the date is not provided in the output. Press "ENTER".
15. The display will show "CnC n=" Press "ENTER". The display will show the current tab setting for the consecutive number. Press the "6", "0", and then the "1" key to change the display to "6.01" so that the consecutive number is provided on the sixth line of the output. Press "ENTER".
15. The display will show "GroSS=" Press "ENTER". The display will show the current tab setting for the gross weight. Press the "2", "0", and then the "1" key to change the display to "2.01" so that the gross weight is provided on the second line of the output. Press "ENTER".
16. The display will show "tArE=" Press "ENTER". The display will show the current tab setting for the tare weight. Press the "3", "0", and then the "1" key to change the display to "3.01" so that the tare weight is provided on the third line of the output. Press "ENTER".
17. The display will show "nET=" Press "ENTER". The display will show the current tab setting for the net weight. Press the "4", "0", and then the "1" key to change the display

to "4.01" so that the net weight is provided on the fourth line of the output. Press "ENTER".

17. The display will show "G ACC=". Press "ENTER". The display will show the current tab setting for the gross accumulator. Press the "0" key to change display to "0.00" so that the gross weight accumulator is not provided on the output. Press "ENTER".

17. The display will show "n ACC=". Press "ENTER". The display will show the current tab setting for the net accumulator. Press the "0" key to change the display to "0.00" so the net weight accumulator is not provided on the output. Press "ENTER".

17. The display will show "CoUnt=". Press "ENTER". The display will show the current tab setting for the count. Press the "0" key to change the display to "0.00" so the count is not provided on the output. Press "ENTER".

17. The display will show "EACH=". Press "ENTER". The display will show the current tab setting for the each. Press the "0" key to change the display to "0.00" so the each value is not provided on the output. Press "ENTER".

17. The display will show "CrLF=". Press "ENTER". The display will show the current setting for carriage return line feed. Press the "1/YES" key so that the display shows "YES". Press "ENTER".

17. The display will show "EoP=". Press "ENTER". The display will show the current setting for end of print. Press the "0" key so that the display shows "0". Press "ENTER".

1. Press "\*" and "PRINT" to set the print format. The display shows "Prt="

2. Press "ENTER". The display will show the current print format. Press the "0" key so that the display shows "0". Press "ENTER".

## **738\_CAP – Permits print capture of ID, Time/Date, CN, gross, tare, and net weight.**

### **738 Setup –**

S2=10000000

Tabs t = 0-10

Tabs d= 0-1

Tabs id= 1-0

Tabs Cn= 2-0

Tabs G= 3-0

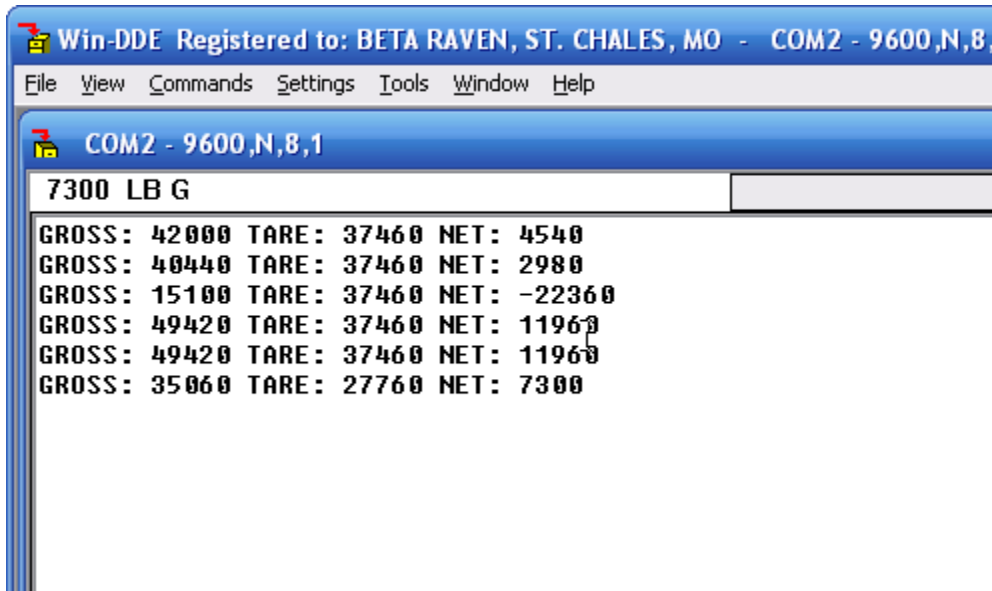
Tabs TA=4-0

Tabs n= 5-0

You can test this with the 738 by storing a keyboard tare "\*" TARE type a value such as 100 and press enter. You must have at least that much weight on the scale. Then press "\*" NET print, to print the gross, tare, net ticket. WinDDE will catch the ticket fields and put them into excel.

## How to get GROSS TARE NET from the 210 to WinDDE

To get the output shown below the indicator tabs must be set correctly as well as some additional setup in WinDDE.



The additional setup in WinDDE is not extensive, it is only a slight modification to the 210\_CAP profile.

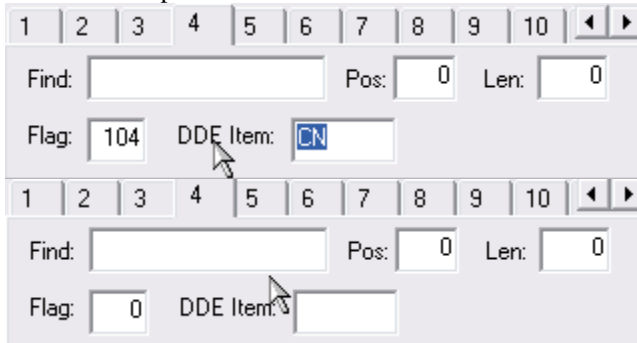


If a profile named 210\_PRINT does not exist it will need to be created, otherwise just choose the 210\_PRINT. To create the 210\_PRINT profile, choose the 210\_CAP profile and click the edit button beside it. An Indicator Profile window will popup. There are only a couple of changes that need to be made here.

- 1) Change the ID from 210\_CAP to 210\_PRINT (changing the name creates a new profile)



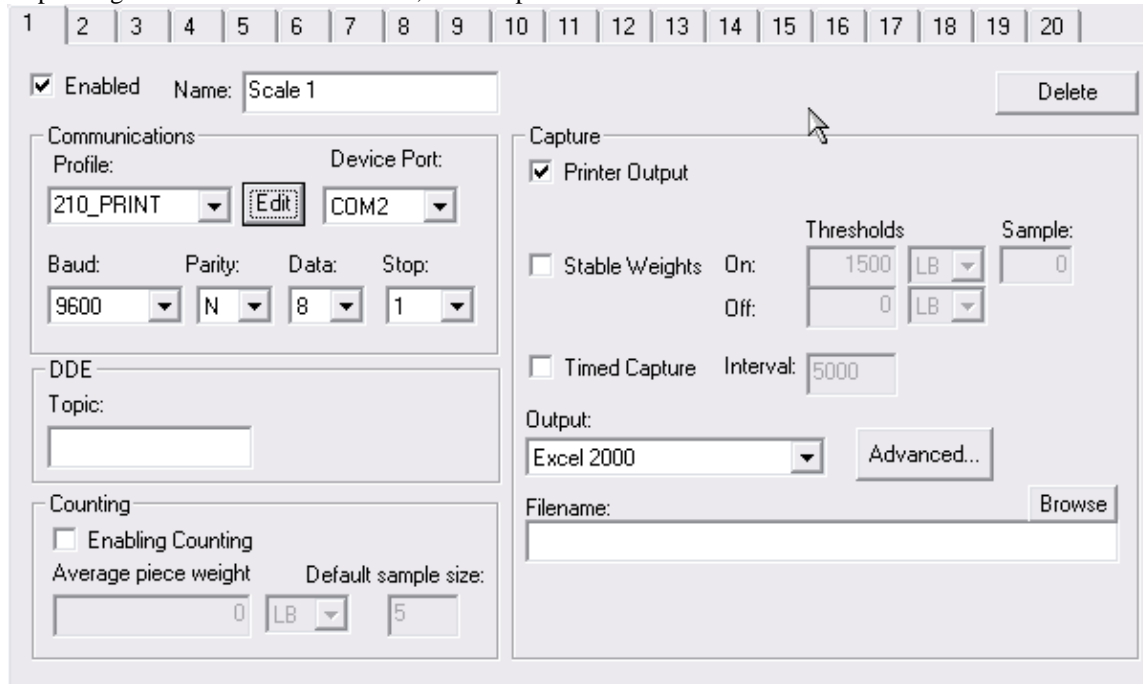
- 2) In the Print Capture section there are several tabs shown.



Tabs 4, 5, & 6 need to be changed to have a Flag of 0 and DDE Item should be blank.

- 3) Click OK

Depending on the version of WinDDE, the Setup Indicators window should look similar to the screenshot below.



Choose the correct Device Port and ensure that the communications setting are correct and press OK.

## 210PRINT – Permits print capture of gross, tare, and net weight.

### 210 Setup –

1. Press “\*”. The display will show “Funct=”. Press “REVIEW”.
2. The display will show “PUO=” Press “ENTER”. The display will show “no”. Press “ENTER.”
2. The display will show “td=” Press “ENTER”. The display will show “12”. Press “ENTER.”
2. The display will show “d oUt=” Press “ENTER”. The display will show “0”. Press “ENTER.”
3. The display will show “SLEEP=”. Press “ENTER”. The display will show the sleep value. Press “ENTER”.
4. The display will show “A off=”. Press “ENTER”. The display will show the auto-off setting. Press “ENTER”.
5. The display will show “CLTar=” Press “ENTER”. The display will show the clear-tare setting. Press “ENTER”.
6. The display will show “Sio?” Press “ENTER”. The display will show “no”. Press the “1/YES” key to change the display to “YES”. Press “ENTER”.
7. The display will show “bAUd=” Press “ENTER”. The display will show the current baud rate setting. For the default 9600 baud press the “9” and “6” key so that the display shows “96”. Press “ENTER”.
8. The display will show “PrtY=” Press “ENTER”. The display will show the current parity setting. For the default no parity press the “0” key so that the display shows “0”. Press “ENTER”.
9. The display will show “BitS=” Press “ENTER”. The display will show the current data bits setting. For the default eight data bits press the “8” key so that the display shows “8”. Press “ENTER”.
10. The display will show “StoP=” Press “ENTER”. The display will show the current stop bits setting. For the default one stop bit press the “1” key so that the display shows “1”. Press “ENTER”.
11. The display will show “Cont1=” Press “ENTER”. The display will show the current setting for continuous data for serial port one. For printer capture the indicator must not be continuous. Press the “0/NO” key so that the display shows “no”. Press “ENTER”.

12. The display will show "Cont2=" Press "ENTER". The display will show the current setting for continuous data for serial port two. For printer capture the indicator must not be continuous. Press the "0/NO" key so that the display shows "no". Press "ENTER".
13. The display will show "Print?". Press "ENTER". The display will show "no". Press the "1/YES" key to change the display to "YES". Press "ENTER".
14. The display will show "Port=". Press "ENTER". The display will show the serial port selected for printer output. Press the "1" or "2" key to set this to the correct port to be connected to the computer. If only one serial port is wired from the 210 indicator this would usually be "1". Press "ENTER".
16. The display will show "HoUr=". Press "ENTER". The display will show the current tab setting for the time. Press the "0" key to change the to "0.00" so that the time is not provided in the output. Press "ENTER".
17. The display will show "dAte=". Press "ENTER". The display will show the current tab setting for the date. Press the "0" key to change the display to "0.00" so that the date is not provided in the output. Press "ENTER".
18. The display will show "CnC n=". Press "ENTER". The display will show the current tab setting for the consecutive number. Press the "0" key to change the display to "0.00" so that the consecutive number is provided on the sixth line of the output. Press "ENTER".
19. The display will show "GroSS=". Press "ENTER". The display will show the current tab setting for the gross weight. Press the "2", "0", and then the "1" key to change the display to "2.01" so that the gross weight is provided on the second line of the output. Press "ENTER".
20. The display will show "tArE=". Press "ENTER". The display will show the current tab setting for the tare weight. Press the "3", "0", and then the "1" key to change the display to "3.01" so that the tare weight is provided on the third line of the output. Press "ENTER".
21. The display will show "nET=". Press "ENTER". The display will show the current tab setting for the net weight. Press the "4", "0", and then the "1" key to change the display to "4.01" so that the net weight is provided on the fourth line of the output. Press "ENTER".
22. The display will show "G ACC=". Press "ENTER". The display will show the current tab setting for the gross accumulator. Press the "0" key to change display to "0.00" so that the gross weight accumulator is not provided on the output. Press "ENTER".
23. The display will show "n ACC=". Press "ENTER". The display will show the current tab setting for the net accumulator. Press the "0" key to change the display to "0.00" so the net weight accumulator is not provided on the output. Press "ENTER".
24. The display will show "CoUnt=". Press "ENTER". The display will show the current tab setting for the count. Press the "0" key to change the display to "0.00" so the count is not provided on the output. Press "ENTER".
25. The display will show "EACH=". Press "ENTER". The display will show the current tab setting for the each. Press the "0" key to change the display to "0.00" so the each value is not provided on the output. Press "ENTER".
26. The display will show "CrLF=". Press "ENTER". The display will show the current setting for carriage return line feed. Press the "1/YES" key so that the display shows "YES". Press "ENTER".
27. The display will show "EoP=". Press "ENTER". The display will show the current setting for end of print. Press the "0" key so that the display shows "0". Press "ENTER".

# STATEMENT OF LIMITED WARRANTY

## WARRANTY TERMS

Cardinal Scale Manufacturing Company warrants the equipment we manufacture against defects in material and workmanship. The length and terms and conditions of these warranties vary with the type of product and are summarized below:

PRODUCT TYPE	TERM	MATERIAL AND WORKMANSHIP	LIGHTNING DAMAGE See note 9	WATER DAMAGE See note 7	CORROSION See note 4	ON-SITE LABOR	LIMITATIONS AND REQUIREMENTS
<b>WEIGHT INDICATORS</b>	90 DAY REPLACEMENT ----- 1 YEAR PARTS	YES	YES	YES	YES	NO	1, 2, 3, 5, 6 A, B, C, D
<b>LOAD CELLS</b> (Excluding Hydraulic)	1 YEAR	YES	YES	YES	YES	NO	1, 2, 3, 5, 6 A, B, C, D
<b>HYDRAULIC LOAD CELLS</b> (When purchased with Guardian Vehicle Scale)	LIFETIME	YES	YES	YES	YES	90 DAYS	1, 5, 6, 8 A, B, C, D
<b>HYDRAULIC LOAD CELLS</b> (When purchased separately)	10 YEARS	YES	YES	YES	YES	NO	1, 5, 6, 8, 9 A, B, C, D
<b>VEHICLE SCALE</b> (Deck and Below Excl. PSC Series)	5 YEARS	YES	YES	YES	YES	90 DAYS	1, 2, 3, 5, 6 A, B, C, D, E
<b>LSC SCALE</b> (Deck and Below)	3 YEARS	YES	YES	YES	YES	90 DAYS	1, 2, 3, 5, 6, 11 A, B, C, D
<b>GUARDIAN FLOOR SCALES</b>	10 YEARS	YES	YES	YES	YES	NO	1, 2, 3, 5, 6, 9, 10 A, B, C, D
<b>ALL OTHER CARDINAL PRODUCTS</b>	1 YEAR	YES	YES	YES	YES	NO	1, 2, 5, 6 A, B, C, D, E
<b>REPLACEMENT PARTS</b>	90 DAYS	YES	YES	YES	YES	NO	1, 2, 4, 5, 6 A, B, C, D
<b>SWIM AND 760 SERIES VEHICLE SCALES</b>	1 YEAR	YES	YES	YES	YES	90 DAYS	1, 2, 5, 6 A, B, C, D
<b>SOFTWARE</b>	90 DAYS	YES	N/A	N/A	N/A	NO	1, 6 B, C, D
<b>CONVEYOR BELT SCALES</b> (including Belt-Way)	1 YEAR	YES	YES	YES	YES	NO	1, 2, 3, 5, 6 A, B, C, D, E, F



**CARDINAL**

Ph. (800) 441-4237  
E-mail: cardinal@cardet.com  
102 E. Daugherty  
Webb City, MO 64870

04/24  
Printed in USA  
315-WARRANTY-CAR-M

## APPLICABLE LIMITATIONS AND REQUIREMENTS

1. This warranty applies only to the original purchaser. The warranty does not apply to equipment that has been tampered with, defaced, damaged, or had repairs or modifications not authorized by Cardinal or has had the serial number altered, defaced or removed.
2. This warranty is not applicable to equipment that has not been grounded in accordance with Cardinal's recommendations.
3. This equipment must be installed and continuously maintained by an authorized Cardinal / Belt-Way dealer.
4. Applies only to components constructed from stainless steel.
5. This warranty does not apply to equipment damaged in transit. Claims for such damage must be made with the responsible freight carrier in accordance with freight carrier regulations.
6. Warranty term begins with date of shipment from Cardinal.
7. Only if device is rated NEMA 4 or better or IP equivalent.
8. Lifetime warranty applies to damages resulting from water, lightning, and voltage transients and applies only to the hydraulic load cell structure itself (does not include pressure transducers, rubber seals, o-rings, and associated wiring).
9. 10-Year prorated warranty on hydraulic load cells.
10. 1-Year warranty for scale structure.
11. PSC models' warranty coverage applies only to agricultural installations on farms up to 3,000 acres (LSC models not limited in this manner).
12. Load cell kits MUST be installed in accordance with Cardinal Scale instructions. Failure to follow these instructions will void the warranty.

## EXCLUSIONS

- A.) This warranty does not include replacement of consumable or expendable parts. The warranty does not apply to any item that has been damaged due to unusual wear, abuse, improper line voltage, overloading, theft, fire, water, prolonged storage or exposure while in purchaser's possession or acts of God unless otherwise stated herein.
- B.) This warranty does not apply to peripheral equipment not manufactured by Cardinal. This equipment will normally be covered by the equipment manufacturer's warranty.
- C.) This warranty sets forth the extent of our liability for breach of any warranty or deficiency in connection with the sale or use of our product. Cardinal will not be liable for consequential damages of any nature, including but not limited to loss of profit, delays or expenses, whether based on tort or contract. Cardinal reserves the right to incorporate improvements in material and design without notice and is not obligated to incorporate said improvements in equipment previously manufactured.
- D.) This warranty is in lieu of all other warranties expressed or implied including any warranty that extends beyond the description of the product including any warranty of merchantability or fitness for a particular purpose. This warranty covers only those Cardinal products installed in the forty-eight contiguous United States and Canada.
- E.) This warranty does not cover paint coatings due to the variety of environmental conditions.
- F.) Do not cut load cell cables on load cells returned for credit or warranty replacement. Cutting the cable will void the warranty.
- G.) Software is warranted only for performance of the functions listed in the software manual and/or the Cardinal proposal.
- H.) The software warranty does not cover hardware. Warranties on hardware are provided from the hardware vendor only.
- I.) The software warranty does not cover interfacing issues to non-Cardinal supplied hardware.
- J.) The software warranty does not include automatic software upgrades unless purchased separately.



Ph. (800) 441-4237  
E-mail: [cardinal@cardet.com](mailto:cardinal@cardet.com)  
102 E. Daugherty  
Webb City, MO 64870

04/24  
Printed in USA  
315-WARRANTY-CAR-M

**Cardinal Scale Mfg. Co.**

*102 E. Daugherty, Webb City, MO 64870 USA*

*Ph: 417-673-4631 or 1-800-641-2008*

*Fax: 417-673-2153*

*www.cardinalscale.com*

*Technical Support: 1-866-254-8261*

*E-mail: tech@cardet.com*

Printed in USA

8525-M278-O1 Rev 2.19 04/03/07