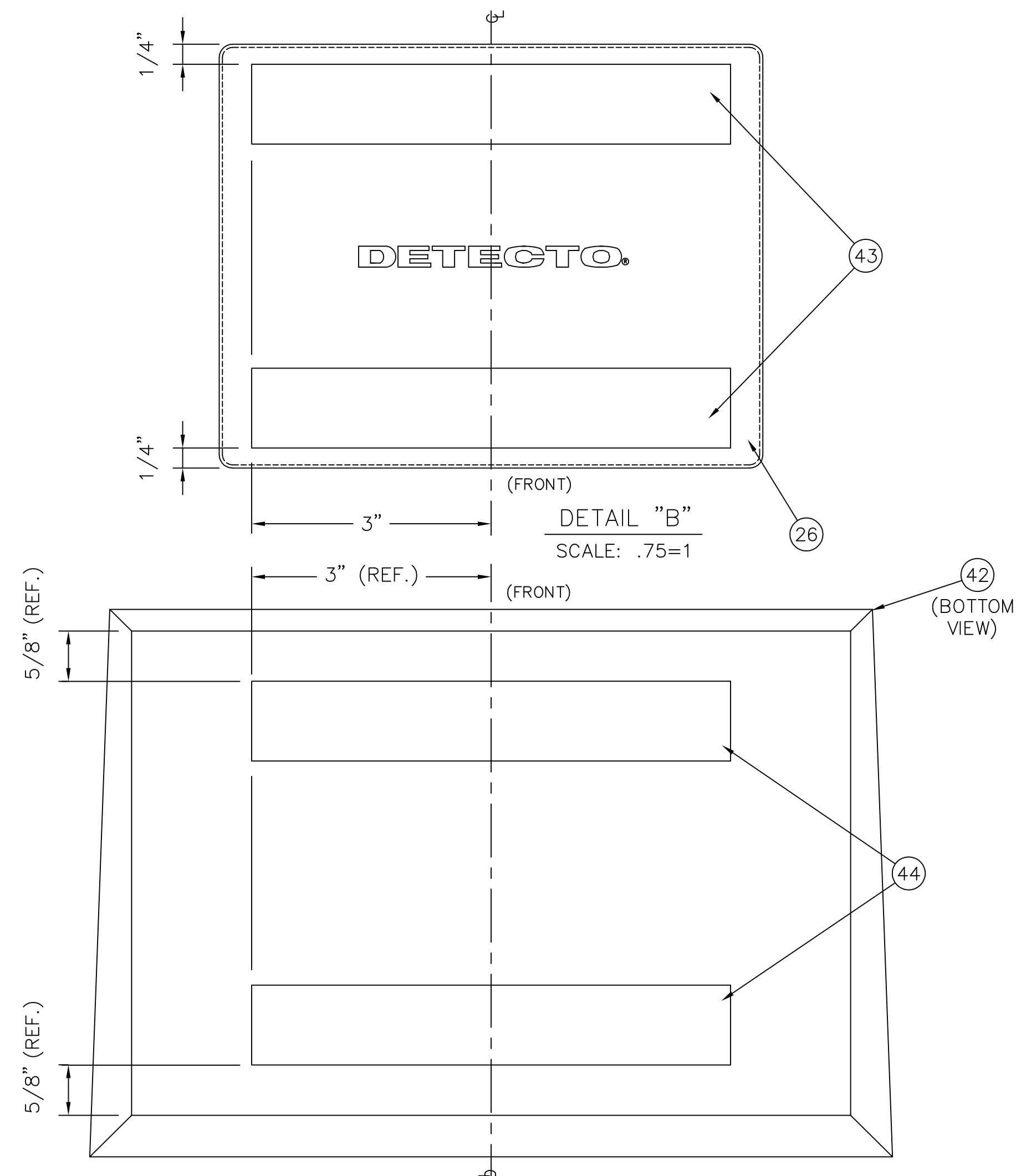
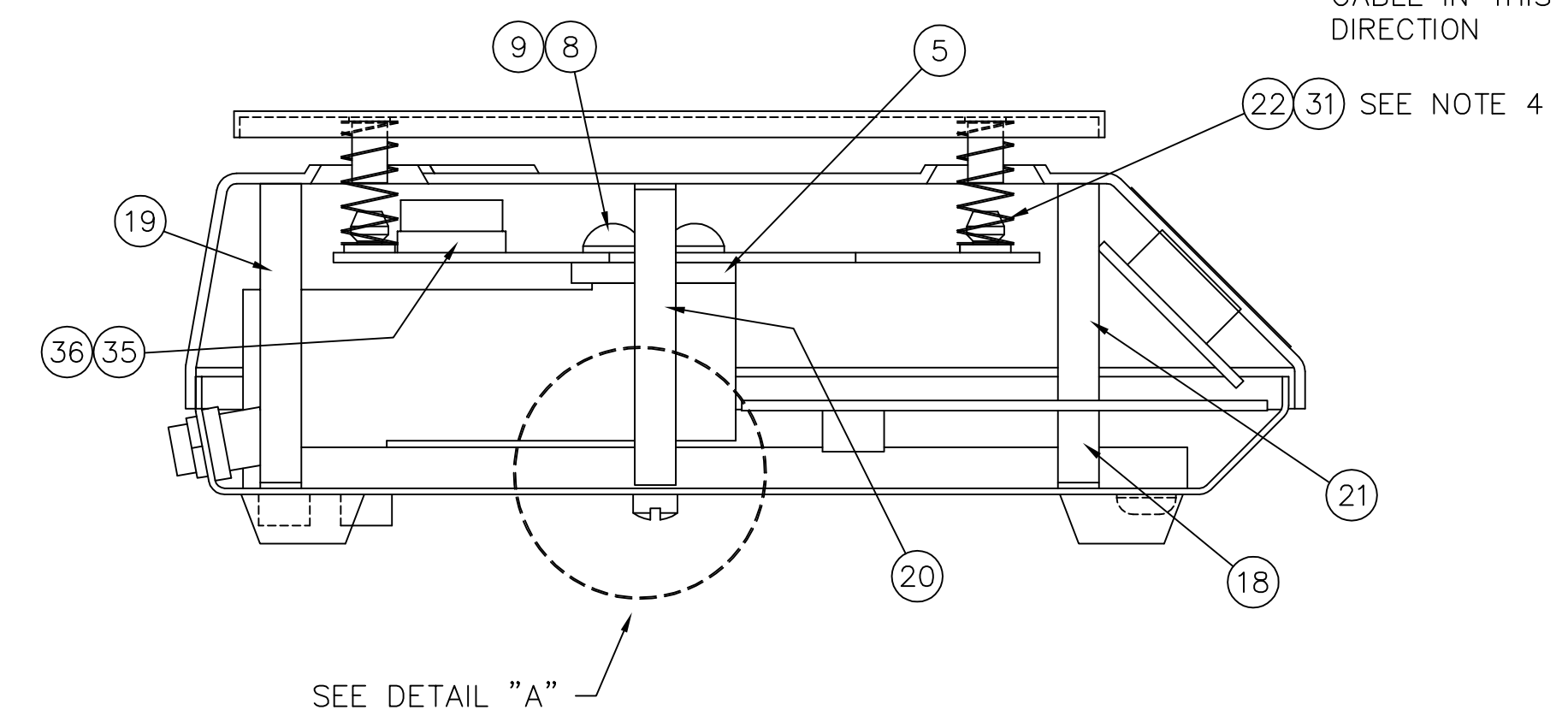
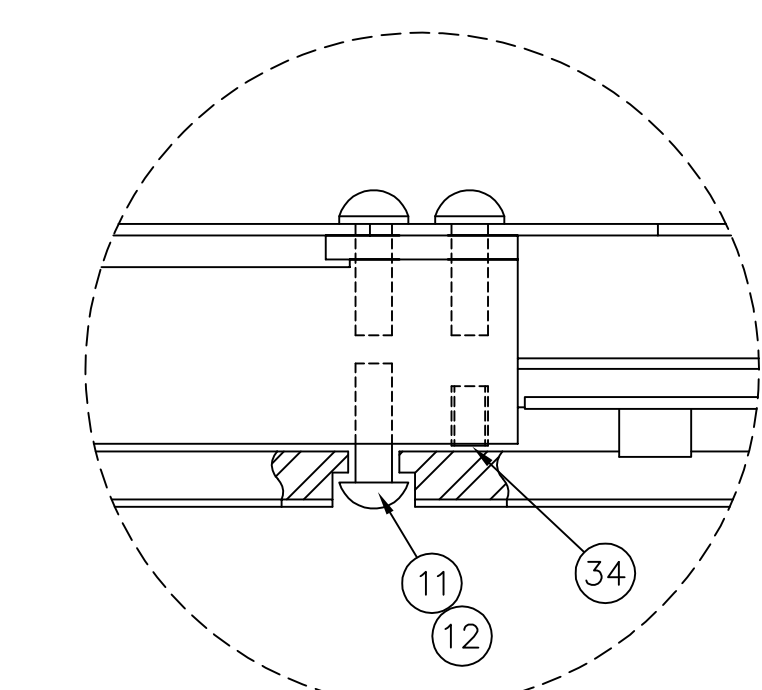
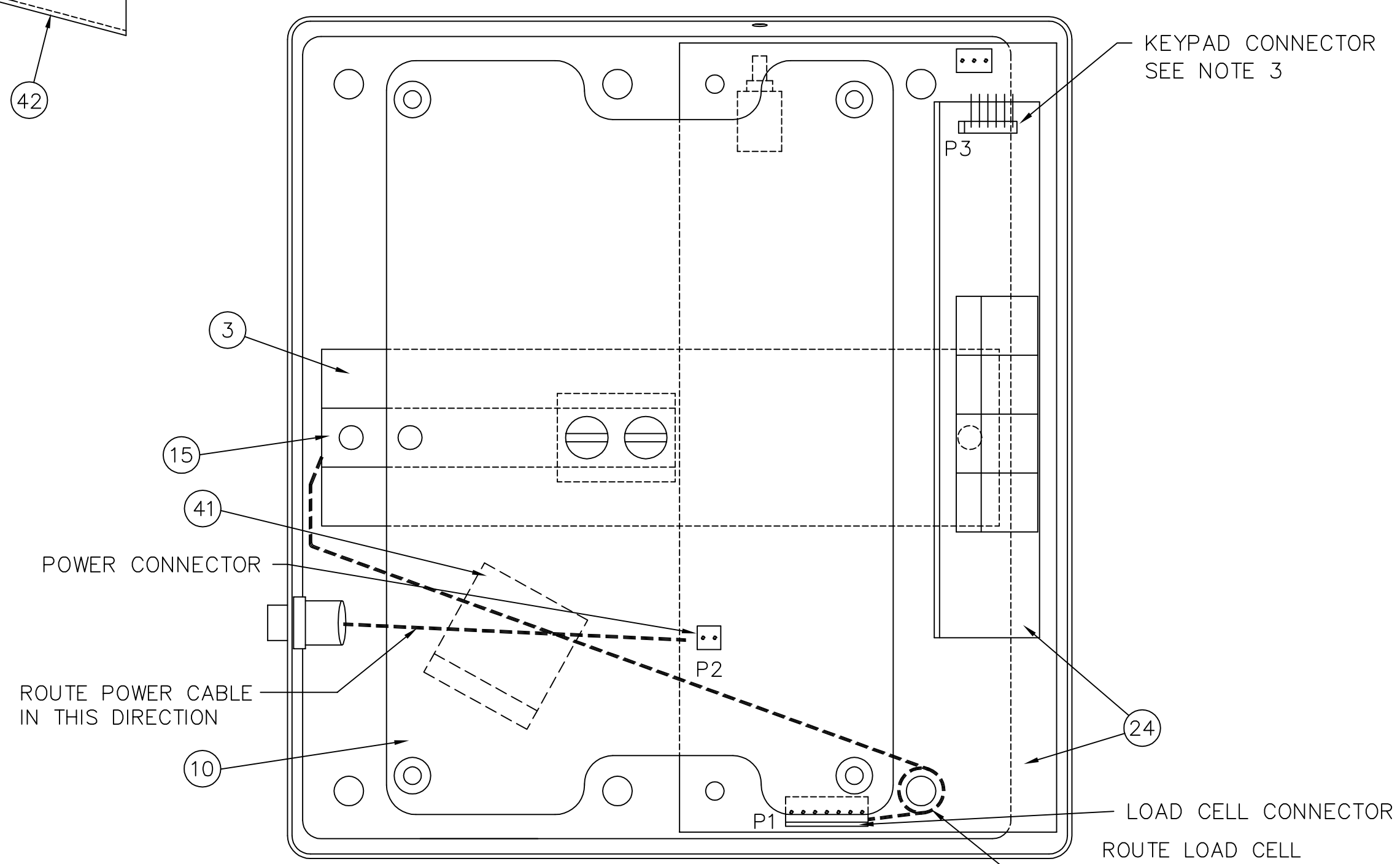
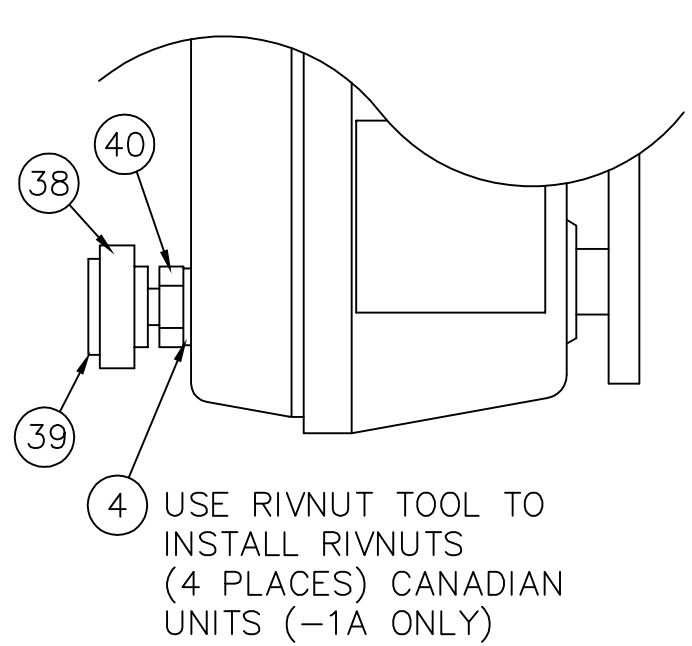
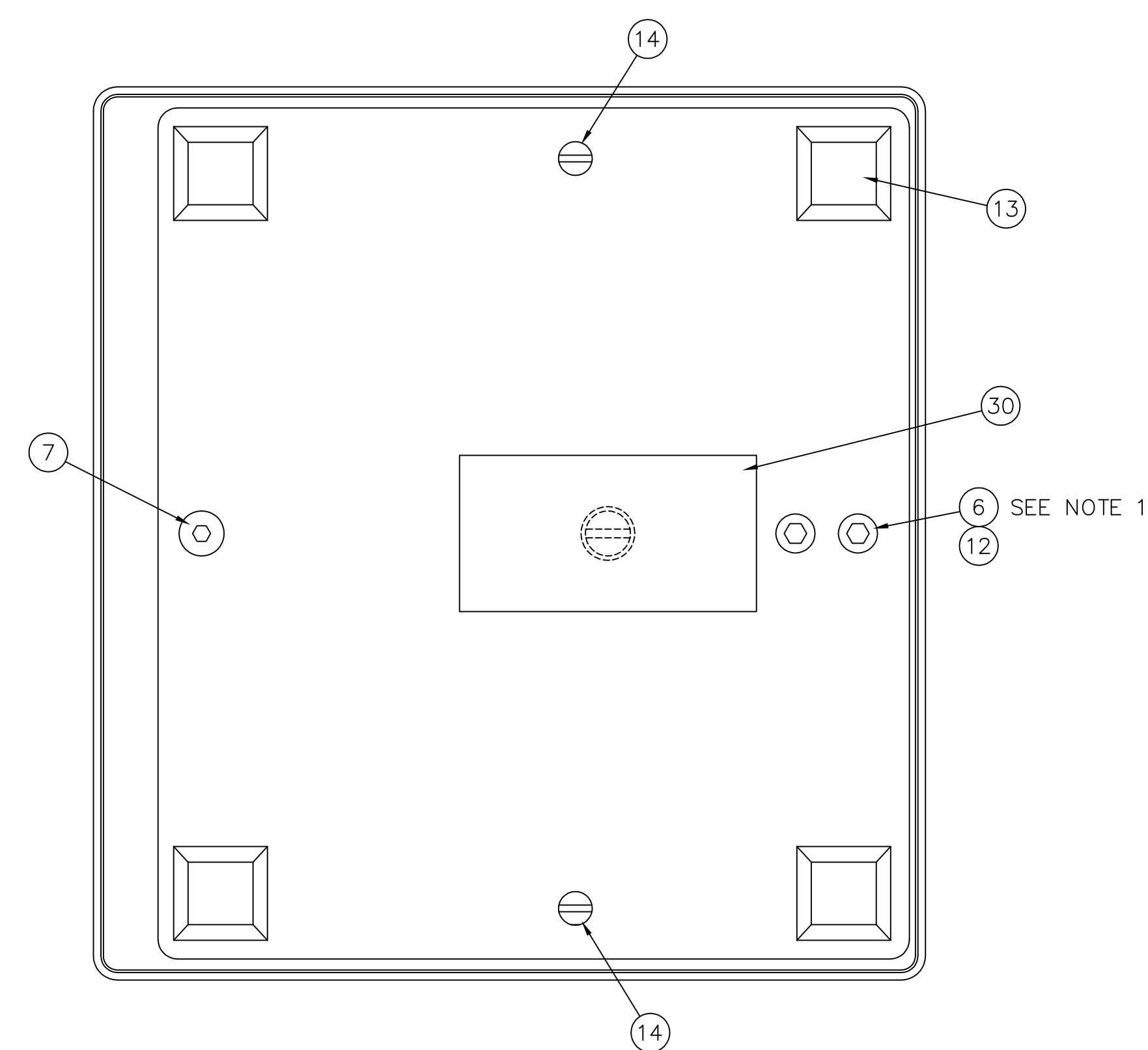
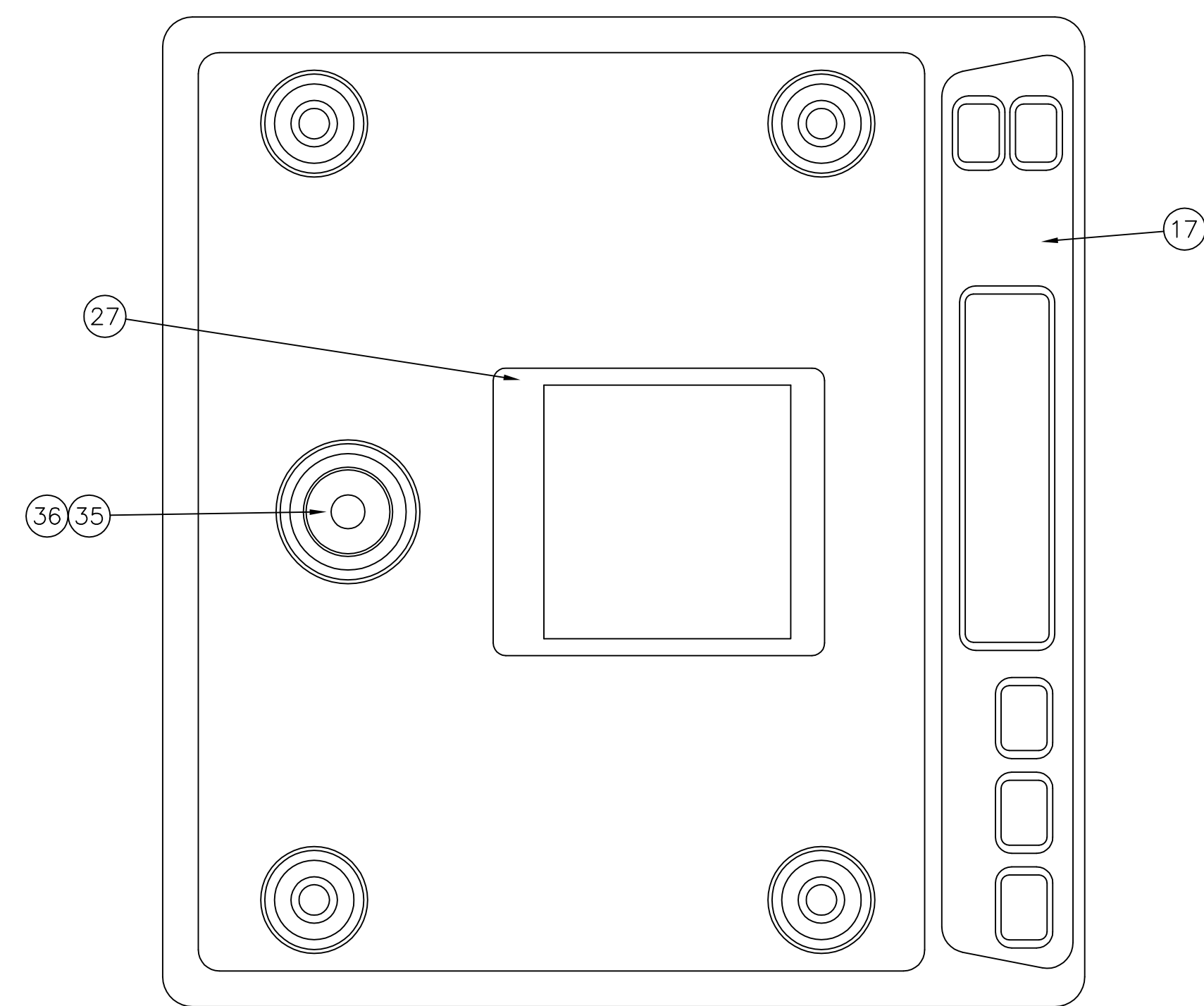
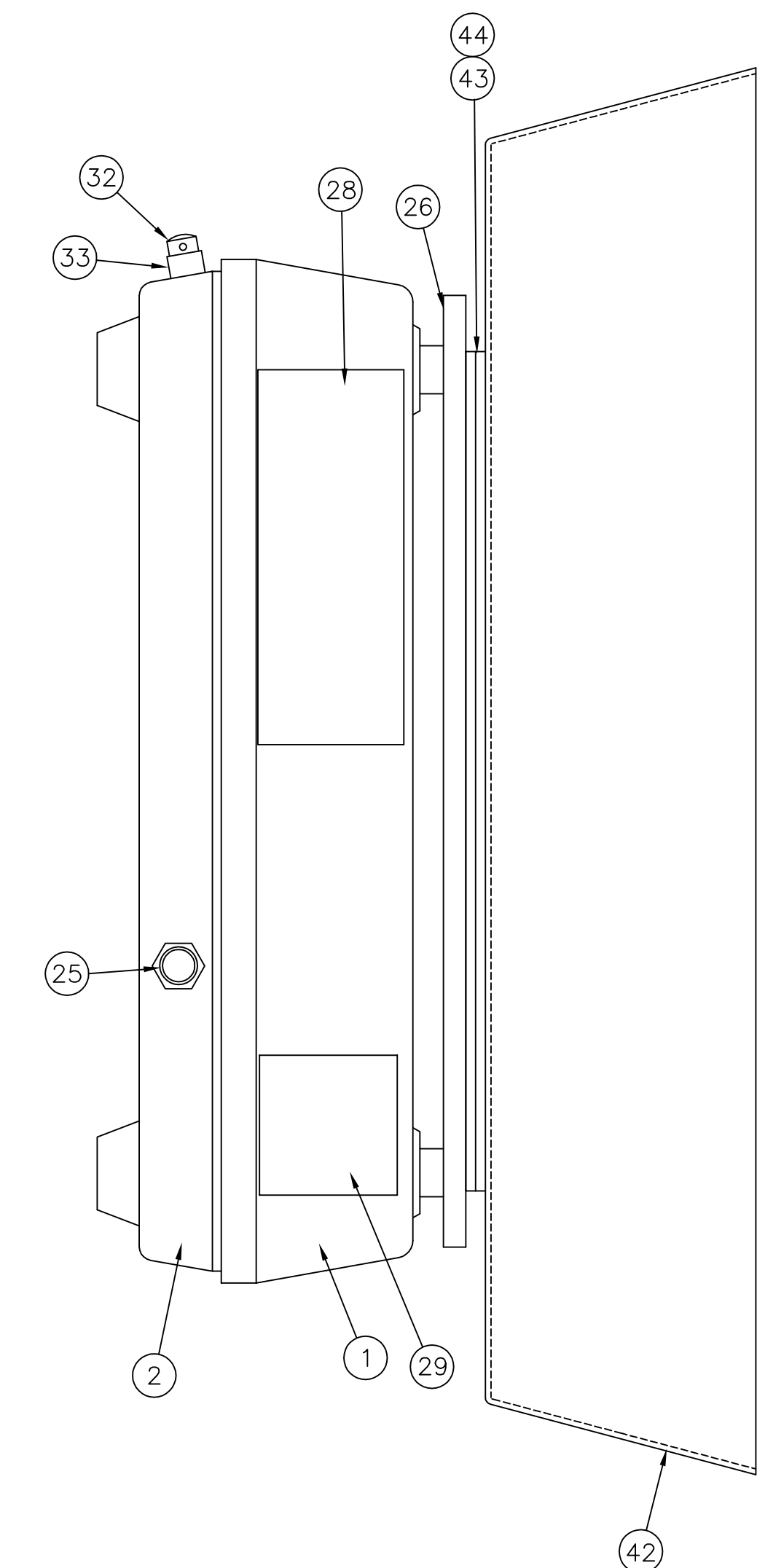


REVISION RECORD			
LTR	DESCRIPTION	DATE	BY
A	RELEASED FOR PRODUCTION	6,21/01	EMJ/DW
B	ITEM 15 WAS 709GR1194, ADDED ITEM 16	8/7/01	21523 RN/GG
C	ITEM 29 PART NO. WAS 6650-0087	2/29/12	25785 JAT

- NOTES
- TORQUE LOAD CELL MOUNTING SCREWS (ITEM 6, QTY. 2) TO 45 INCH POUNDS.
 - SET UNDERLOAD STOP (ITEM 11), USE LOCTITE (ITEM 12) ON FIRST 1/8" OF THREADS. TIGHTEN UNDERLOAD SCREW UNTIL IT BOTTOMS OUT THEN BACK OFF 1/4 TURN. THE UNDERLOAD SCREW MUST NOT TOUCH DURING OPERATION.
 - APPLY A SPOT OF RTV SILICONE (ITEM 37) TO P3 KEYBOARD CONNECTOR AFTER CABLE HAS BEEN INSTALLED. THIS IS FOR SHIPPING.
 - APPLY A LIBERAL AMOUNT OF ADHESIVE EPOXY (ITEM 31) TO THE SPRING MOUNTS ON THE COMMODITY TRAY SUPPORT (ITEM 10). PRESS SPRING (ITEM 22) ONTO THE SPRING MOUNTS ON ITEM 10, 4 PLACES.



QTY.	QTY.	QTY.	ITEM	PART/DWG. NUMBER	DESCRIPTION	MATERIAL OR SOURCE	WT. EACH
.007	.007	44	6680-2098	VELCRO-HOOKS	CUT 2 EACH 6" LONG		
.007	.007	43	6680-2097	VELCRO-LOOPS	CUT 2 EACH 6" LONG		
1	1	42	SKR5561	DIAPER TRAY			
1	1	41	6610-5007	CABLE CLIP			
4	-	40	6013-0295	10-32 HEX NUT			
4	-	39	6540-1058	RUBBER FOOT			
4	-	38	6640-0018	ADJUSTING KNOB			
.001	.001	37	6560-0041	RTV SILICONE			
.001	.001	36	6560-0009	ADHESIVE			
1	1	35	6690-0001	BULLS EYE LEVEL			
1	1	34	6021-1258	10-32x.31 SET SCW			
1	1	33	587R9398	SPACER .16 LG S.S.			
1	1	32	6021-2071	6-32x.25 FIL HD SCW			
A\R	A\R	31	6560-1068	ADHESIVE EPOXY			
1	1	30	593R1007	FACTORY SET LABEL			
1	1	29	5930-B137-08	MADE IN USA STICKER			
1	1	28	8510-C397-01	FCC STICKER			
1	1	27	593GR986	SERIAL TAG			
1	1	26	8528-C026-0A	COMM TRAY ASSY			
1	1	25	597GR202	PWR. CABLE ASSY			
1	1	24	8534-D627-0A	P.C. BD. ASSY			
		23					
4	4	22	6022-0022	SPRING			
2	2	21	587R9382	SPACER	FOR P.C. BOARD		
2	2	20	587R9391	SPACER	TAPPED BOTH ENDS		
2	2	19	587R9390	SPACER	TAPPED ONE END		
2	2	18	6680-0121	6x.43 NYLON SPACER			
1	1	17	8534-C603-08	KEYPAD			
1	1	16	6610-2304	7 PIN CONNECTOR	LOAD CELL CONNECTOR		
1	1	15	DF-15T	LOAD CELL ASSY			
2	2	14	6021-0860	8-32x.75 FIL HMS			
-	4	13	6540-1004	RUBBER FOOT			
A\R	A\R	12	6560-0021	LOCTITE			
1	1	11	6021-1024	10-32x.5 RHMS			
1	1	10	8528-B009-0A	COMM TRAY SUPPORT			
2	2	9	6024-0033	#10 LOCKWASHER			
2	2	8	6021-1048	10-32x.62 RHMS			
1	1	7	6021-2033	10-32x.25 BHCS			
2	2	6	6021-1124	10-32x.75 SHCS			
2	2	5	587R9396	1/8" L. C. SPACER			
4	-	4	6680-1096	RIVNUT			
1	1	3	511R9522	LOAD CELL MTG BAR			
1	1	2	428GR1041	BOTTOM COVER ASSY			
1	1	1	426GR987	TOP COVER ASSY			

QTY.	QTY.	QTY.	ITEM	PART/DWG. NUMBER	DESCRIPTION	MATERIAL OR SOURCE	WT. EACH
-1A	-0A				ASSY		
-4KD-C	-4KD						

PARTS/MATERIAL LIST

UNLESS OTHERWISE SPECIFIED TOLERANCE ON DIMENSIONS ARE:
 ANGLES ± 1/2°
 INTEGERS/FRACTIONS ± 1/16 IN.
 DECIMALS (.X) ± .03 IN.
 DECIMALS (.XX) ± .01 IN.
 DECIMALS (.XXX) ± .005 IN.
 NOTE: WHOLE NUMBERS MUST BE WRITTEN XX.000 TO INVOKE DECIMAL TOLERANCES.

THIS DRAWING IS THE PROPERTY OF THE CARDINAL SCALE MFG. CO. AND SHALL NOT BE USED NOR REPRODUCED EITHER WHOLLY OR IN PART EXCEPT WITH WRITTEN AUTHORIZATION. ALL RIGHTS OF DESIGN OR INVENTION ARE RESERVED.

Cardinal
 Cardinal Scale Manufacturing Co.
 10001 W. MISSOURI AVE. ST. LOUIS, MO 63143

CARDINAL DETECTO FULLER WEIGHING SYSTEMS

TITLE: FINAL ASSY - AP-4KD / -4KD-C SCALES

SCALE: 1=1

DR. EMJ DATE 6/21/01

CH. DATE

MODEL AP SERIES SHEET 1 OF 1 DWG. NO. 8534-D631-0A REV. C