

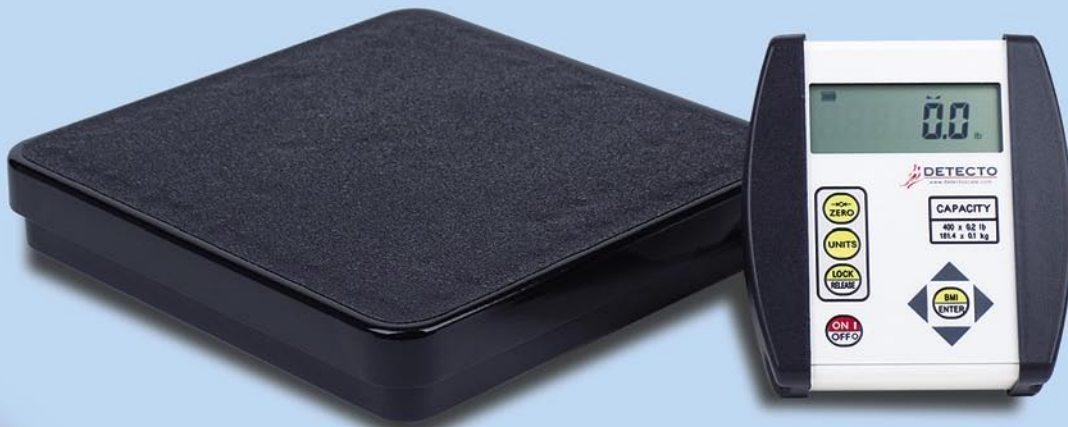
# DR400-750

## Portable Home Health Care Scale

Detecto's reliable DR400-750 digital physician scale is lightweight and portable, making it perfect for mobile clinics, home care nurses, or wherever a portable scale with Body Mass Index is needed. The remote digital indicator comes with a wall-mount bracket and easily mounts on a counter top or wall. The indicator features large 0.75 high digits in an LCD display, selectable units, Body Mass Index and a Lock/Release key for holding

weight after a patient has stepped away from the scale. The 750 quickly calculates Body Mass Index by simply entering the patient's height while weighing.

The DR400-750 is battery powered, so you can take the scale anywhere you need it. The unit has a slip-resistant mat to ensure patient safety when getting on and off the scale.



*Optional carrying case*



### SPECIFICATIONS

<b>Capacity:</b>	400 lb x 0.2 lb 180 kg x 0.1 kg
<b>Platform:</b>	12" x 12" 35 cm x 35 cm
<b>BMI Height Range:</b>	3 to 7 ft 90 to 215 cm
<b>Display:</b>	0.75" high digits - LCD
<b>Power:</b>	6 AA batteries (not included) or optional AC adapter
<b>Shipping Weight:</b>	13 lb / 6 kg