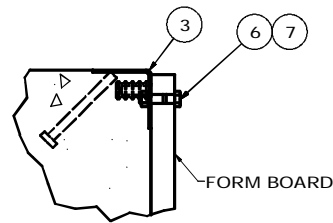
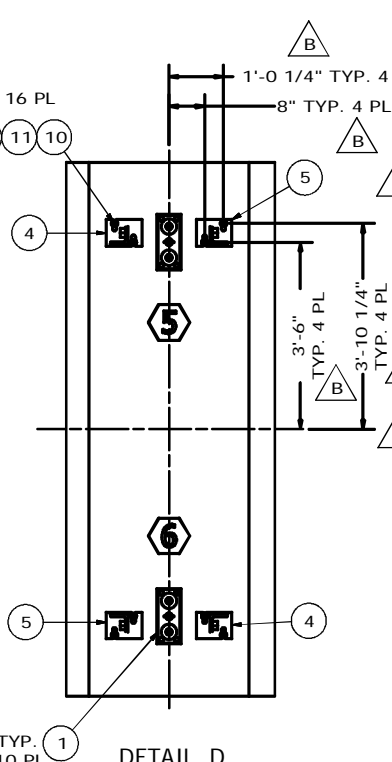
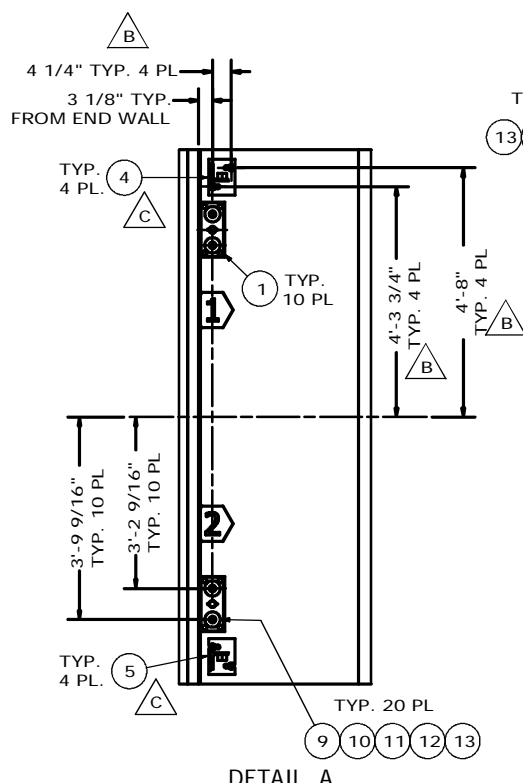
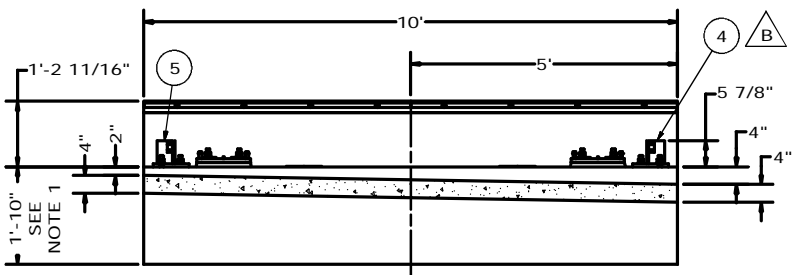
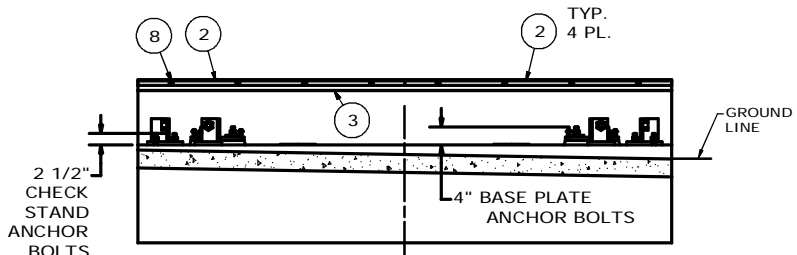
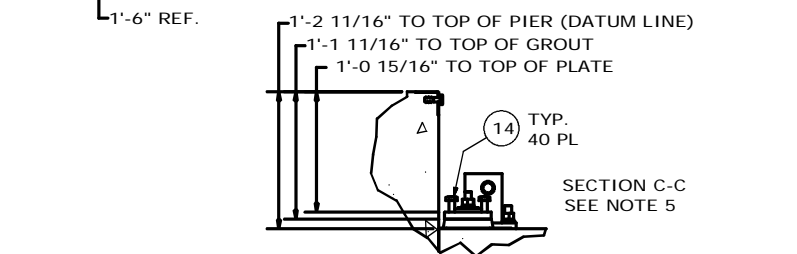
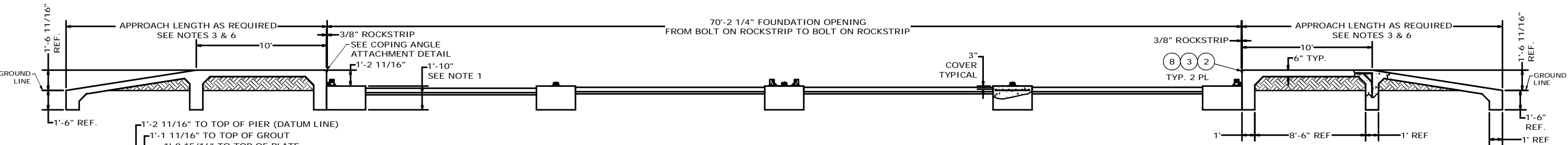
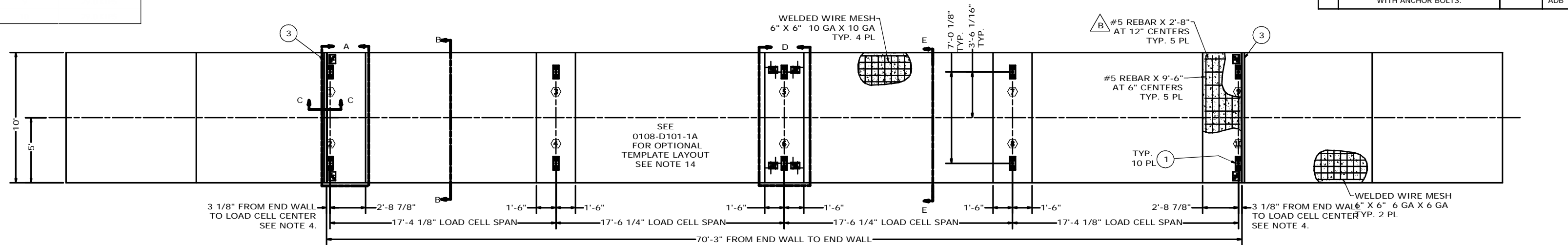


FOR REFERENCE ONLY



COPING ANGLE ATTACHMENT DETAIL
BOLT ON ROCKSTRIP NOT SHOWN IN THIS VIEW


REVISION HISTORY			
LTR	DESCRIPTION	DATE	BY
A	RELEASE FOR PRODUCTION	8/7/12	25974 BP
B	CHANGED ITEM 11 PART NUMBER, UPDATED THE HEIGHT OF ITEMS 6 AND 7, CHANGED THE CONCRETE PIER WIDTHS, CHANGED THE CHECK STAND ANCHOR BOLT LOCATIONS, ADDED TO THE NOTES, UPDATED THE WEIGHT	1/3/13	26220 ADB
C	REMOVED THE TEMPLATES FROM THE DRAWING AND BILL OF MATERIALS SWITCHED THE BOLT DOWN CHECK STANDS AT EACH END OF THE FOUNDATION	4/23/13	26278 ADB
D	ADDED TO NOTE 7 ABOUT USING EPOXY WITH ANCHOR BOLTS.	6/20/13	26477 ADB



NOTES:

- THE SCALE FOUNDATION AS SHOWN IS SUFFICIENT FOR FIRM SOIL AND GOOD CONCRETE. THE MINIMUM SOIL BEARING SHALL BE 3,000 POUNDS PER SQUARE FOOT AND THE MINIMUM CONCRETE STRENGTH SHALL BE 3,000 POUNDS PER SQUARE INCH AT 28 DAYS. FOR UNUSUAL SOIL CONDITIONS OR DEEP FROST PENETRATION, ALTER THE FOUNDATION AS REQUIRED. THE FOOTING SHALL BE BELOW THE FROST LINE.
- CARDINAL SCALE MFG. CO. SHALL NOT BE RESPONSIBLE FOR THE STABILITY OF THE FOUNDATION.
- THE FOUNDATION CONTRACTOR SHALL CONTACT THE STATE WEIGHT AND MEASURES DIVISION FOR STATE FOUNDATION REQUIREMENTS.
- WORK FROM THE CENTERLINES WHEN ERECTING FORMS AND SETTING BOLTS. ADJUST THE LOAD CELL BASE PLATES TO THE PROPER ELEVATION USING LEVELING BOLTS (ITEM 14) AND GROUT IN PLACE. GROUT SHALL BE OF AN APPROVED NON-SHRINKING EPOXY TYPE ONLY. REF. U.S. GROUT CORP., 5-STAR; SIKKA CHEMICAL; REXNORD; OR EQUAL.
- ON THE APPROACH END OR ENDS OF A VEHICLE SCALE INSTALLED IN ANY ONE LOCATION FOR A PERIOD OF SIX MONTHS OR MORE, THERE SHALL BE A STRAIGHT APPROACH AS FOLLOWS:
(A) AT LEAST THE WIDTH OF THE PLATFORM
(B) AT LEAST ONE-HALF THE LENGTH OF THE PLATFORM BUT NOT REQUIRED TO BE MORE THAN 40 FEET
(C) NOT LESS THAN 10 FEET OF ANY APPROACH ADJACENT TO THE PLATFORM SHALL BE CONSTRUCTED OF CONCRETE OR SIMILAR DURABLE MATERIAL TO INSURE THAT THIS PORTION REMAINS SMOOTH AND LEVEL AND IN THE SAME PLANE AS THE PLATFORM. HOWEVER, GRATING OF SUFFICIENT STRENGTH TO WITHSTAND ALL LOADS MAY BE INSTALLED IN THIS PORTION; AND FURTHER WHERE DEEMED NECESSARY FOR DRAINAGE PURPOSES, THE REMAINING PORTION OF THE APPROACH MAY SLOPE SLIGHTLY.
- ANCHOR BOLTS SHOULD PROJECT 4" ABOVE DATUM LINE. ANCHORS NEED TO EPOXY INTO CONCRETE. TO ENSURE PROPER SCALE FUNCTION.
- APPROXIMATE EXCAVATION AND CONCRETE REQUIRED FOR SCALE FOUNDATION AS SHOWN: MAIN PIERS: 9.5 CU. YDS. EXCAVATION; 12.5 CU. YDS. CONCRETE SLAB FLOOR: 5.2 CU. YDS. EXCAVATION; 6.9 CU. YDS. CONCRETE APPROACHES (10'-0" EACH END): 6.3 CU. YDS. FILL; 3.4 CU. YDS. CONCRETE
- TRANSMISSION CABLE FROM SCALE JUNCTION BOX TO SCALE HOUSE BOX SHALL BE IN 1 1/2" MINIMUM SIZE CONDUIT AT LEAST 24" FROM THE CLOSEST ELECTRICAL LINE. THEY MAY CROSS AT 90° ONLY.
- CAUTION: DO NOT WELD ON STRUCTURE WHILE THE LOAD CELLS ARE IN THE SYSTEM.
- REINFORCING ROD AND WELDED WIRE MESH ARE NOT FURNISHED BY CARDINAL SCALE MFG. CO. THE REBAR SHALL CONFORM TO ASTM A615, GRADE 60. THE WELDED WIRE MESH SHALL CONFORM TO ASTM A-185.
- TOP OF PIERS ARE TO BE SMOOTH AND LEVEL WITHIN ±1/8". (ALL PIERS ARE TO BE WITHIN 1/4")
- ITEMS 10, 11, 12, AND 13 ARE SUPPLIED BY CARDINAL SCALE MFG. CO. ONLY WHEN ORDERED.
- STUD LOCATING TEMPLATES ARE AVAILABLE AS OPTIONAL EQUIPMENT. SEE TEMPLATE LAYOUT (0108-D101-1A) FOR PLACEMENT SPECIFICATIONS.

QTY.	QTY.	QTY.	ITEM	PART/DWG.	DESCRIPTION	MATERIAL OR	WT.
		-OA	ASSY.	NUMBER		SOURCE	EACH
40	14	6007-0230	HEX HEAD BOLT	5/8-11x3" TAP BOLT GRADE 5			0.5
36	13	BY OTHERS	HEX NUT	3/4"-10 UNC			0.14
36	12	BY OTHERS	LOCK WASHER	3/4" HELICAL			0.05
36	11	BY OTHERS	3/4" FLAT WASHER				.12
36	10	BY OTHERS	HEX BOLT	3/4" -10UNC-2A X 10"			1.3
20	9	0502-B201-08	CHECKERED WASHER				1.4
16	8	6021-0995	SCW FLAT-HEAD SOCKET CAP	7/16-14X1.0 Z/P			
8	7	6013-0065	HEX NUT	3/8-16 UNC-2B			.01
8	6	6007-0050	HEX HEAD BOLT	3/8-16UNC-2A X 1 1/2"			.06
4	5	0108-C100-1A	BOLT DOWN CHECK STAND				14.7
4	4	0108-C100-0A	BOLT DOWN CHECK STAND				14.7
2	3	0108-C103-0A	COPING ANGLE - BOLT ON RS				18.9
4	2	0108-B104-08	ROCK STRIP - BOLT ON				6.2
10	1	0108-B069-0A	BASE PLATE AND PINS, CBC50K		SEE NOTE 5		9.6

QTY.	QTY.	QTY.	ITEM	PART/DWG.	DESCRIPTION	MATERIAL OR	WT.
		-OA	ASSY.	NUMBER		SOURCE	EACH
		382.7	WT.	PARTS/MATERIAL LIST			
UNLESS OTHERWISE SPECIFIED TOLERANCE ON DIMENSIONS ARE: ANGLES ± 1/2" INTEGERS/FRACTIONS ± 1/16 IN. DECIMALS (X) ± .03 IN. DECIMALS (XX) ± .01 IN. DECIMALS (XXX) ± .005 IN. NOTE: WHOLE NUMBERS MUST BE WRITTEN XX.XXX TO INVOLVE DECIMAL TOLERANCES.				<div>Cardinal Cardinal Scale Manufacturing Co. WEBB CITY, MISSOURI 64480</div> <div>CARDINAL DETECTO FULLER WEIGHING SYSTEMS</div> <div>TITLE FOUNDATION PLAN - EMBEDDED (70'-2 1/4" X 10'-0" - 50 TON CAPACITY 25 TON CLC)</div>			
SCALE		NTS		DO NOT SCALE DRAWING		NEXT ASSEMBLY	0108-D070-1A
DR. BP		DATE		12/5/2011			
CH.		DATE					
MODEL		5070-PSC		SHEET 1		DWG. NO. 0108-D111-0A	
						REV. D	