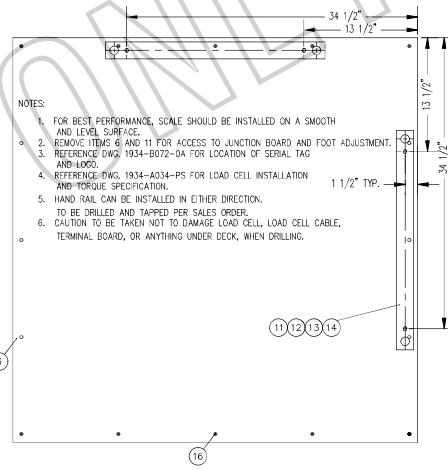
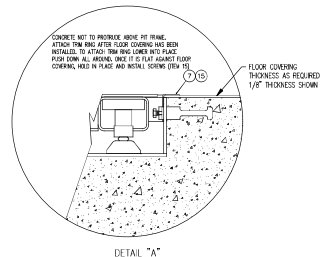
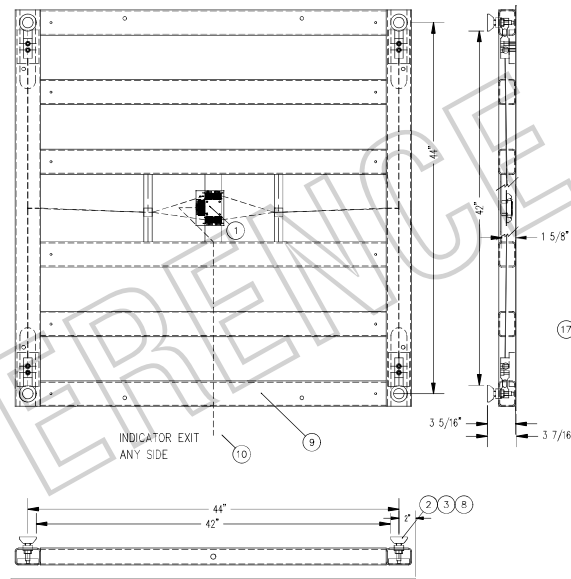
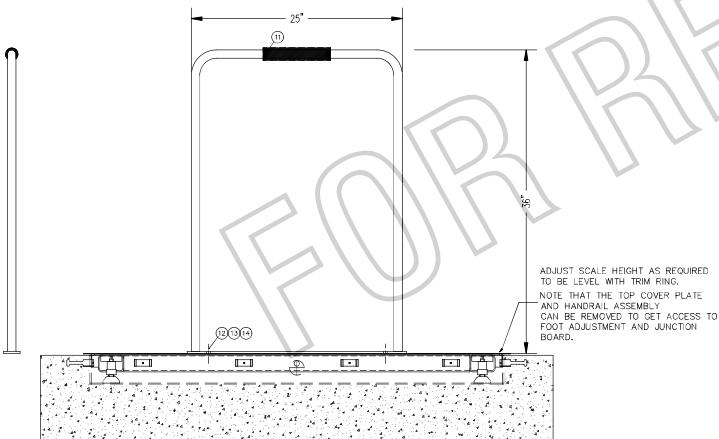


VIBRATE CONCRETE TO PROVIDE FIRM SUPPORT WITHOUT ANY VOIDS IN THE CONCRETE UNDER THE LOAD CELL SUPPORT PADS.

SECTION B-B



NOTES:

1. FOR BEST PERFORMANCE, SCALE SHOULD BE INSTALLED ON A SMOOTH AND LEVEL SURFACE.
2. REMOVE ITEMS 6 AND 11 FOR ACCESS TO JUNCTION BOARD AND FOOT ADJUSTMENT.
3. REFERENCE DWG. 1934-B072-04 FOR LOCATION OF SERIAL TAG AND LOGO.
4. REFERENCE DWG. 1934-A034-PS FOR LOAD CELL INSTALLATION AND TORQUE SPECIFICATION.
5. HAND RAIL CAN BE INSTALLED IN EITHER DIRECTION.
6. CAUTION TO BE TAKEN NOT TO DAMAGE LOAD CELL, LOAD CELL CABLE, TERMINAL BOARD, OR ANYTHING UNDER DECK, WHEN DRILLING.

308	299	308	299	WT.	PARTS/MATERIAL LIST			
					UNLESS OTHERWISE SPECIFIED TOLERANCE ON DIMENSIONS ARE: ANGLES ± 1/2° INTEGRALS/FRACTIONS ± 1/16 IN. DECIMALS (.XX) ± .01 IN. DECIMALS (.XXX) ± .005 IN. NOTE: WHOLE NUMBERS MUST BE WRITTEN AS 000 TO INVOLVE DECIMAL TOLERANCES.			
					THIS DRAWING IS THE PROPERTY OF THE CARDINAL SCALE MFG. CO. AND SHALL NOT BE USED NOR REPRODUCED EITHER WHOLLY OR IN PART EXCEPT WITH WRITTEN AUTHORIZATION. ALL RIGHTS OF DESIGN OR INVENTION ARE RESERVED.			
					TITLE FINAL ASSY. (ID-4848S-) W/S.S. COVER AND S.S. TRIM RING			
					SCALE NTS DATE 12/27/16			
					DR. GPL DATE 12/27/16			
					MODEL DATE			
					SHEET 1 OF 1			
					DWG. NO. 1914-0034-0A			
					REV. E			