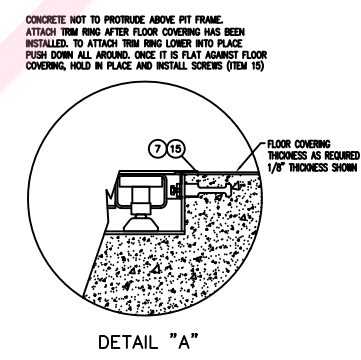
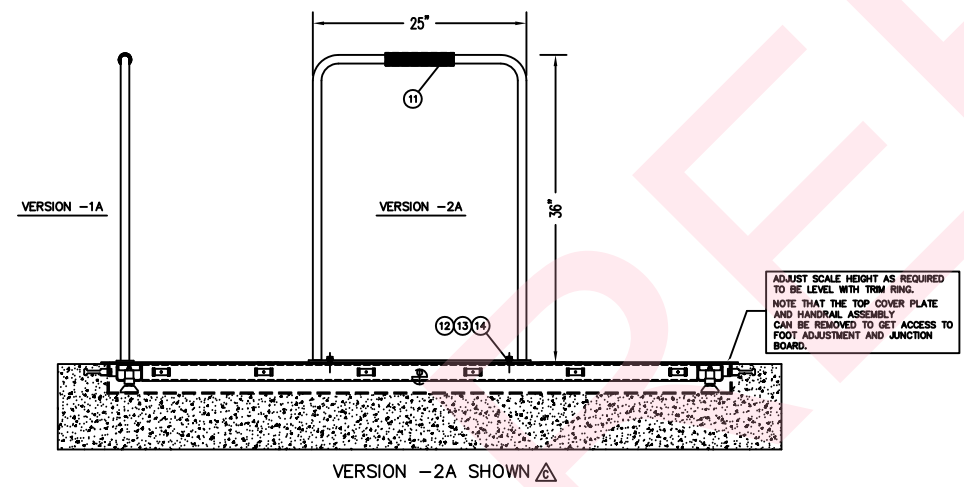
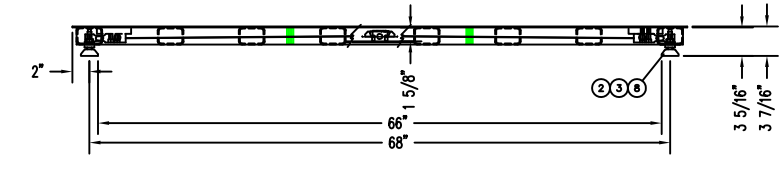
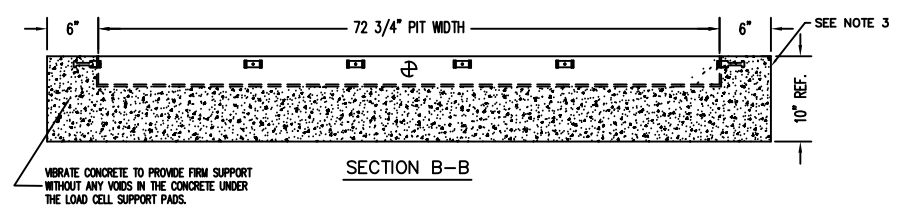
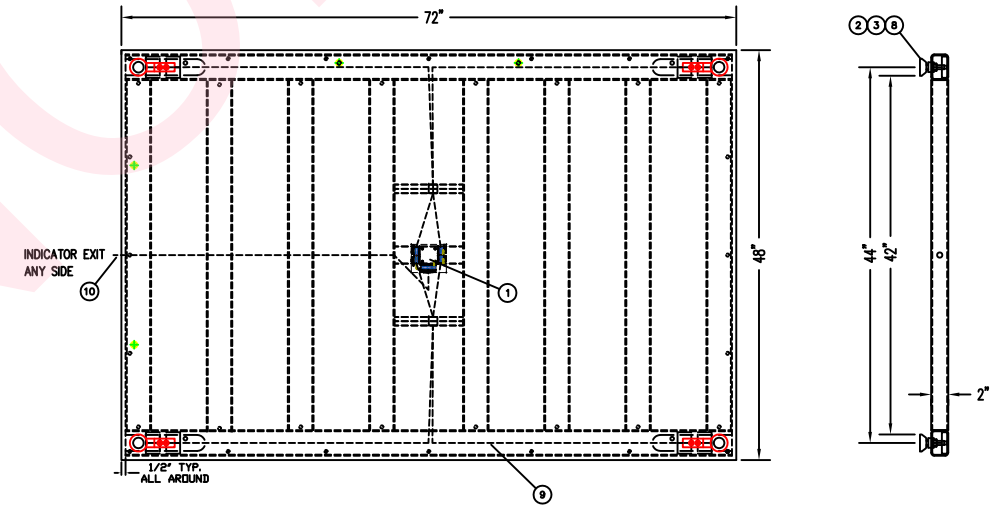
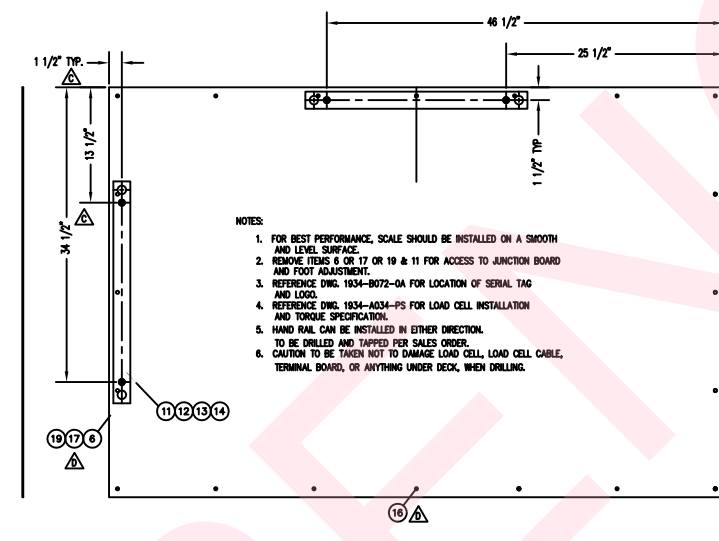
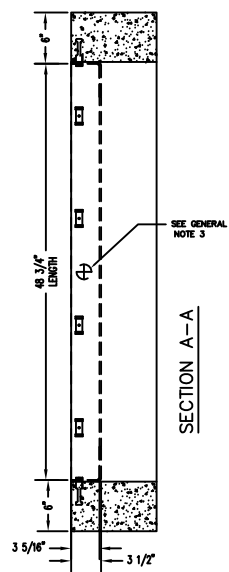
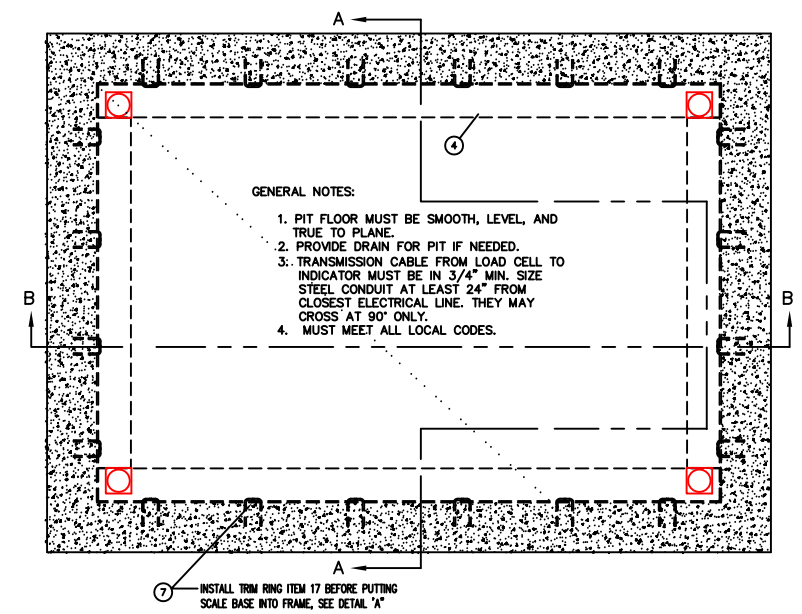


REVISION RECORD			
LTR	DESCRIPTION	DATE	BY
A	RELEASED FOR PRODUCTION	4/25/17	28201 CJ
B	ITEM 10, CHANGED QTY. FROM 1 TO REF CHANGED CPN FROM -0A TO -1A	9.1.17	28403 bs
C	ADDED DIMENSIONS TO HANDRAIL PLACEMENT ON 4'-0" SIDE OF ASSEMBLY, ADDED ITEMS 11, 12, 13, 14 & 19 TO -2A ASSEMBLY, OBSOLETE -3A, -4A, -5A, -6A & -7A ASSEMBLIES FROM B.O.M. "VERSION -2A, SHOWN" SECTION WAS LABELED "VERSION -1A SHOWN"	1/28/19	28310 EMJ
D	UPDATE APPEARANCE OF ITEMS 6, 17, & 19 DUE TO ADDITION OF 4 O-SHIM HOLES, ITEM 16 QTY. WAS 16.	1/30/19	28345 EMJ
E	CHANGED ITEM 9 TO READ BASE ASSEMBLY INSTEAD OF WEIGHBRIDGE	2/11/20	28651 S/W
F	CHANGED: 6021-1002 FROM QTY 16 TO 20	4/20/21	31286 JH



QTY.	QTY.	QTY.	ITEM	PART/DWG. NUMBER	DESCRIPTION	MATERIAL OR SOURCE	WT. EACH
1	-	-	19	1914-0060-28	DECK PLATE W/ HR	HANDRAIL 6' SIDE	121
.002	.002	.002	18	6560-0017	CONFORMAL COAT.		-
-	1	-	17	1914-0060-18	DECK PLATE W/ HR	HANDRAIL 4' SIDE	121
20	20	20	16	6021-1224	SCW FLAT HEAD	#12-24 x 3/4 S.S.	.01
20	20	20	15	6021-1002	SCW HEX HD	#10-32 x 1/2" S.S.	.01
2	2	-	14	6024-0019	WASHER FLAT	3/8" S.S.	.01
2	2	-	13	6024-0046	WASHER LOCK	3/8" S.S.	.01
2	2	-	12	6007-0041	BOLT HEX HD	3/8-16 x 1" S.S.	.04
1	1	-	11	1934-B110-0A	HANDRAIL ASSY		8.7
REF	REF	REF	10	3300-0293-1A	LOAD CELL CABLE		1.0
1	1	1	9	1914-0058-0A	BASE ASSEMBLY	72" x 48"	290
REF	REF	REF	8	LFB-500HMT	LOAD CELL		1.5
1	1	1	7	1913-0456-0A	PIT FRAME TRIM	TRIM RING 72"x48", S.S.	12.34
-	-	1	6	1914-0060-08	DECK PLATE	S.S. NO HANDRAIL	121
1	1	1	5	1934-B072-0A	I.D. MARKING		0.1
1	1	1	4	1914-0060-0A	PIT STEEL ASSY.		100
REF	REF	REF	3	1930-B363-0A	F.H. FOOT ASSY.	2" DIA.	0.9
REF	REF	REF	2	6021-2064	S.H. CAP SCREW	3/8-24 UNF-2A x 1 1/4"	0.5
REF	REF	REF	1	1914-0009-0A	JUNCTION BOARD		2.0
QTY.	QTY.	QTY.	ITEM	PART/DWG. NUMBER	DESCRIPTION	MATERIAL OR SOURCE	WT. EACH
-2A	-1A	-0A	ASSY				

UNLESS OTHERWISE SPECIFIED TOLERANCE ON DIMENSIONS ARE:

ANGLES ± 1/2°

INTEGERS/FRACTIONS ± 1/16 IN.

DECIMALS (.X) ± .03 IN.

DECIMALS (.XX) ± .01 IN.

DECIMALS (.XXX) ± .005 IN.

NOTE: WHOLE NUMBERS MUST BE WRITTEN XX.000 TO INVOLVE DECIMAL TOLERANCES.

THIS DRAWING IS THE PROPERTY OF THE CARDINAL SCALE MFG. CO. AND SHALL NOT BE USED NOR REPRODUCED EITHER WHOLLY OR IN PART EXCEPT WITH WRITTEN AUTHORIZATION. ALL RIGHTS OF DESIGN OR INVENTION ARE RESERVED.

Cardinal
Cardinal Scale Manufacturing Co.
CARDINAL DETECTO FULLER WEIGHING SYSTEMS

TITLE: FINAL ASSY. (ID-7248S-) W/S.S. COVER AND S.S. TRIM RING

SCALE: NTS DO NOT SCALE DRAWING

DR. C. MOORE DATE 4/26/17 NEXT ASSEMBLY

CH. DATE

MODEL ID-7248S-XXXX SHEET 1 OF 1 DWG. NO. 1914-0059-0A REV. F