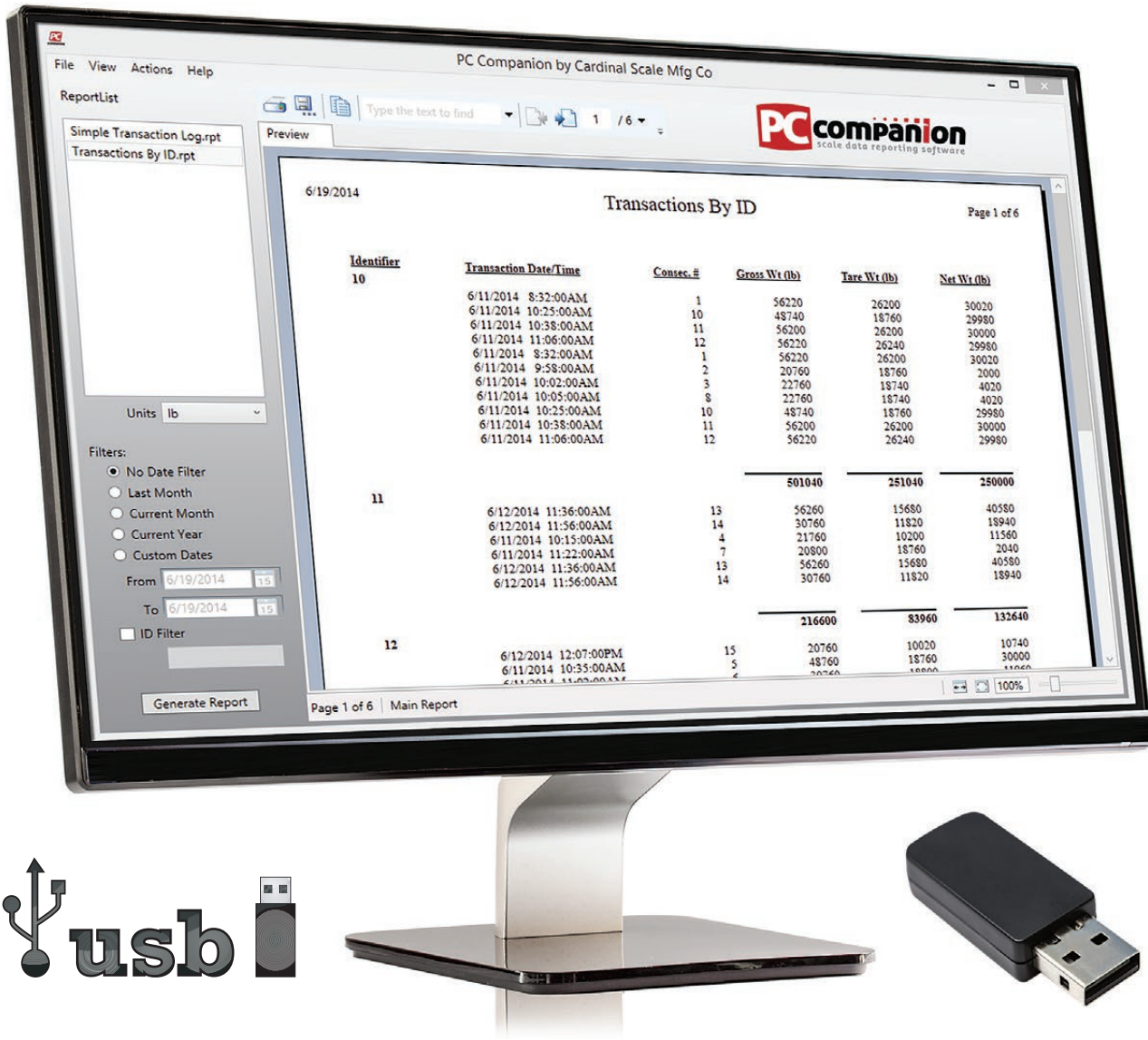




# PC companion

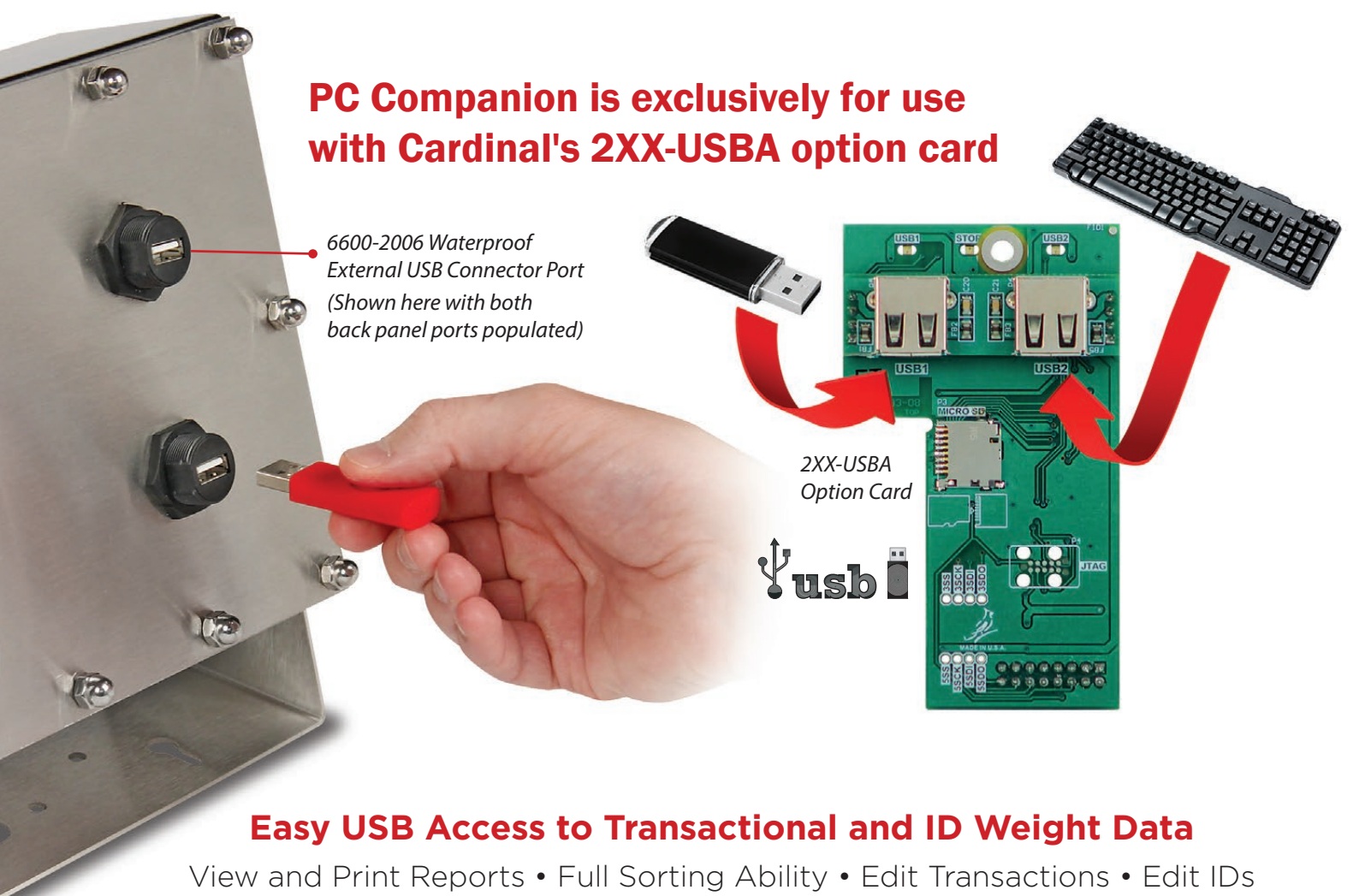
scale data reporting software



## User-Friendly Reporting Freeware for USB-A Weight Data

View Scale Transactions • Create, Modify, and Delete IDs • Generate Reports

## PC Companion is exclusively for use with Cardinal's 2XX-USBA option card



6600-2006 Waterproof External USB Connector Port (Shown here with both back panel ports populated)

2XX-USBA Option Card



## Easy USB Access to Transactional and ID Weight Data

View and Print Reports • Full Sorting Ability • Edit Transactions • Edit IDs

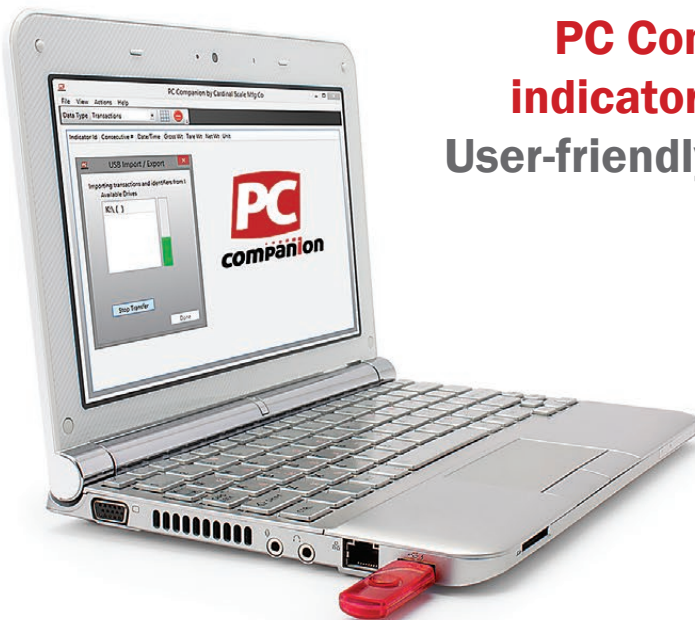
**Cardinal Scale's PC Companion is free, user-friendly reporting software** that allows you to view a scale's transactions; create, modify, and delete IDs; and generate a versatile scale data report. This software is programmed exclusively for use with the 2XX-USBA option card for Cardinal Scale's 200 series weight indicators. When used with a 4GB USB memory stick, there is enough storage space available to provide a virtually-unlimited amount of weight transactions and IDs.

Cardinal's 200 series indicators equipped with the 2XX-USBA option card feature two internal USB-A ports (one port for a USB memory stick and one for a 101 keyboard). Additionally, the 205 indicator shown above is configured with two 6600-2006 waterproof external connector ports for easy access to the USB memory on the back panel. All 205, 210, and 225 indicators ship from the Cardinal Scale factory with the back panel prepped for easily adding the 6600-2006 USB-A external port. This feature provides 200 series indicators with a powerful method of accessing all transactional and ID storage data.

---

## PC Companion makes importing weight indicator data easy via USB memory stick

### User-friendly, one-click transaction reporting



Once PC Companion is installed on your computer, you may take the USB memory stick with transaction data from the indicator and insert it into one of the open USB slots on your PC. A USB Import/Export window should appear in PC Companion, and can also be found under the Actions menu. Select the USB drive from the import window and then Start Transfer to import all transactions and IDs found on the drive.

**Please Note:** When importing transactions into PC Companion from a USB drive, the software will automatically delete the CSV transaction file from the USB memory stick. This is to help avoid accidentally uploading the same data again and protect any modifications made within PC Companion.

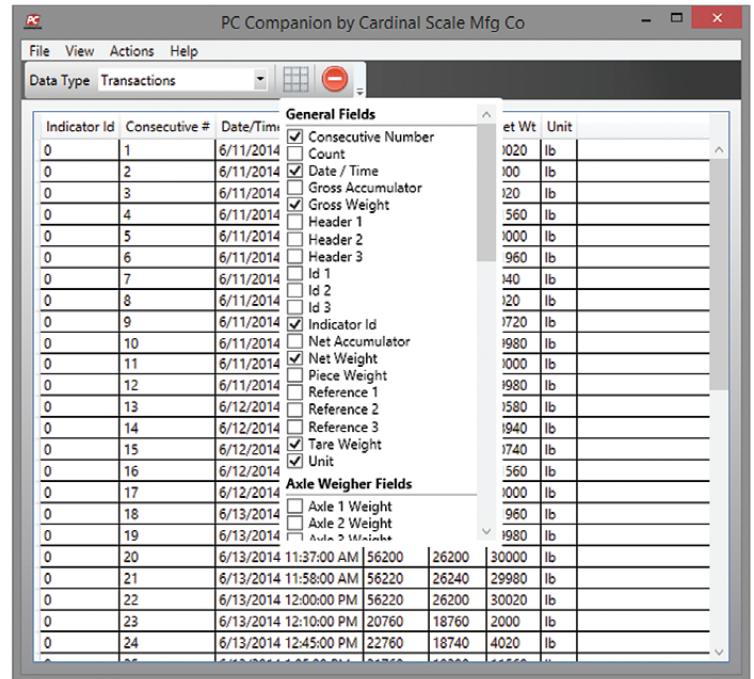
## Versatile Transaction Field Options

Every transaction is shown within PC Companion, with over 25 optional display fields including:

- Indicator ID
- Consecutive Number
- Count
- Date/Time
- Gross Weight
- Tare Weight
- Net Weight
- Units
- Net Accumulator
- Piece Weight
- Headers
- IDs
- References... and many more options



The optional fields are categorized according to operational type, such as **Axle Weights**, **Batcher**, **Livestock**, **Multi-Scale** and **General**, which allows a more organized structure to improve workflow.

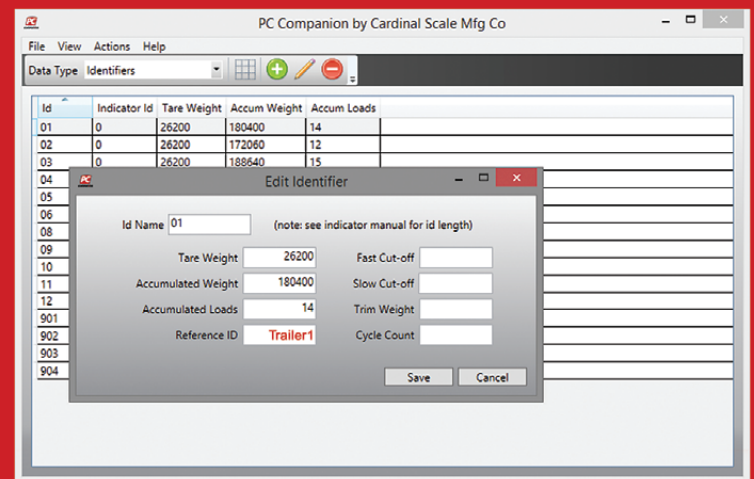


## Editing IDs in PC Companion

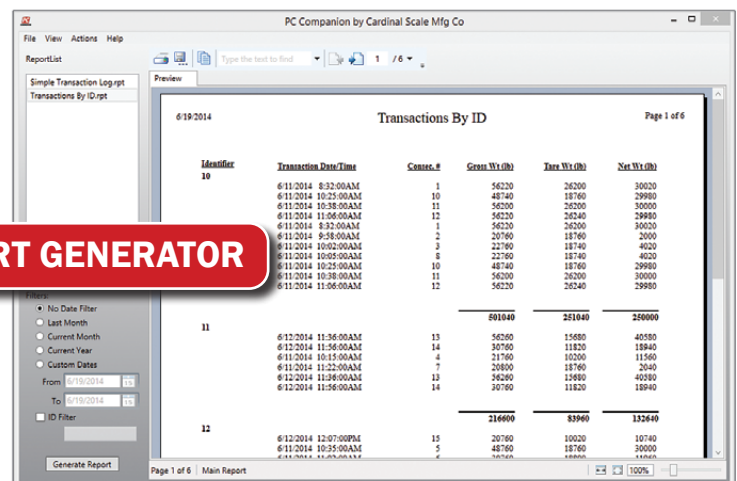
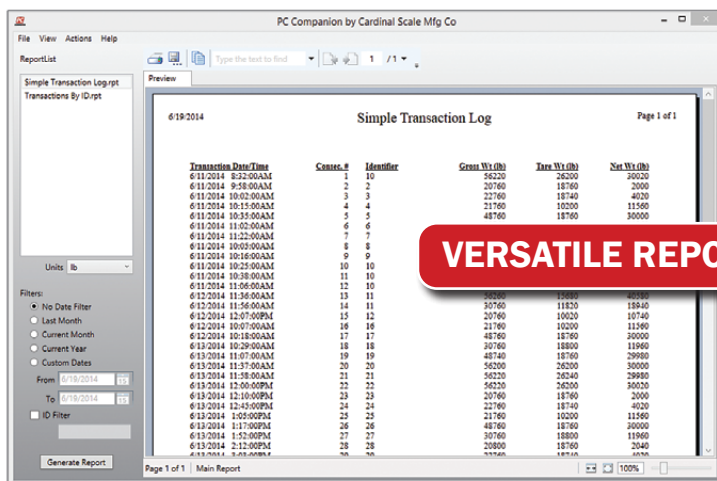
One of the most important features in PC Companion is that IDs may be created, edited, and deleted within the software. Editable ID fields include:

- Tare
- Accumulated Weight
- Accumulated Loads
- Reference ID
- Fast Cut-off
- Slow Cut-off
- Trim Weight
- Cycle Count
- Reference ID

The IDs may be exported to a USB memory stick and then loaded again back into the 200 series indicator, removing the hassle of entering individual IDs and their corresponding information through an indicator's keypad.



*This Edit Identifier feature provides a very efficient method of altering detailed ID data all in one easy-to-navigate location.*



**VERSATILE REPORT GENERATOR**

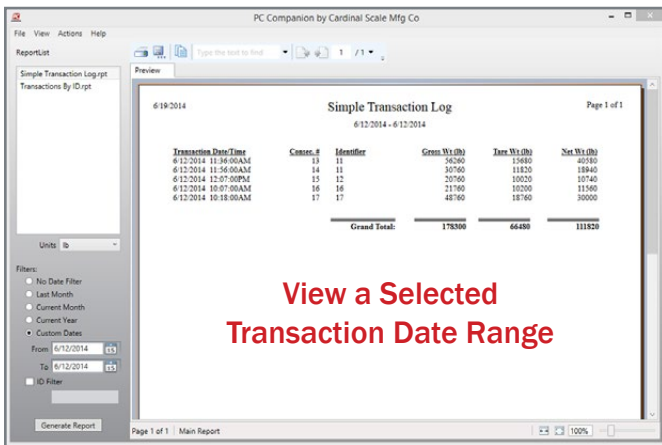
**Simple Transaction Log Sorted By Date**

**Sort Transactions Filtered by ID**

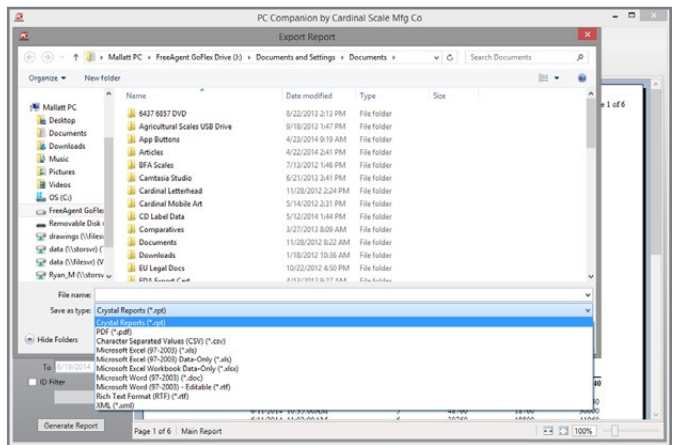


- Powerful, simplified data tables for transactions and IDs
- Create, modify, and delete IDs on your PC
- Selectable Report Units: lb, kg, tn, t, oz
- Identifier data may be exported and uploaded to indicator
- Easy-to-use, one-click transaction reporting
- Choose specified time periods for reports and filter by ID
- Simple transaction log or transactions-by-ID report options
- Export reports as PDF, RPT, RTF, XML, Excel or Word file types
- Print reports directly from PC Companion
- Technical support available

## Cardinal Scale Offers PC Companion Software Free of Charge to Authorized Dealers in Support of 200 Series Indicator Functionality



View a Selected Transaction Date Range



### Generate Specific Reports

Reports may be generated from PC Companion's transaction and ID data tables, and can be customized to show only desirable time periods, or even filtered to display only a specified ID. Units may be set according to region of operation and may be lb, kg, tn, t, or oz. Whether viewing reports by Simple Transaction Log or sorted with Transactions by ID, you may filter the data by:

- Last Month
- Current Month
- Current Year
- or Custom Dates – which may then be specified.

### Exporting Data and/or Printing

These reports may be exported in your choice of file types:

- PDF
- RPT
- RTF
- XML
- Excel
- Word

Reports may also be printed directly from PC Companion, providing several different options available to fit your business.

Cardinal Scale reserves the right to improve, enhance or modify features and specifications without prior notice. All registered trademarks are the property of their respective owners.



SINCE  
1950



102 East Daugherty St., Webb City, MO 64870 USA  
Toll-Free: (800) 441-4237 E-mail: cardinal@cardet.com  
www.CardinalScale.com

**SOLD BY:**