



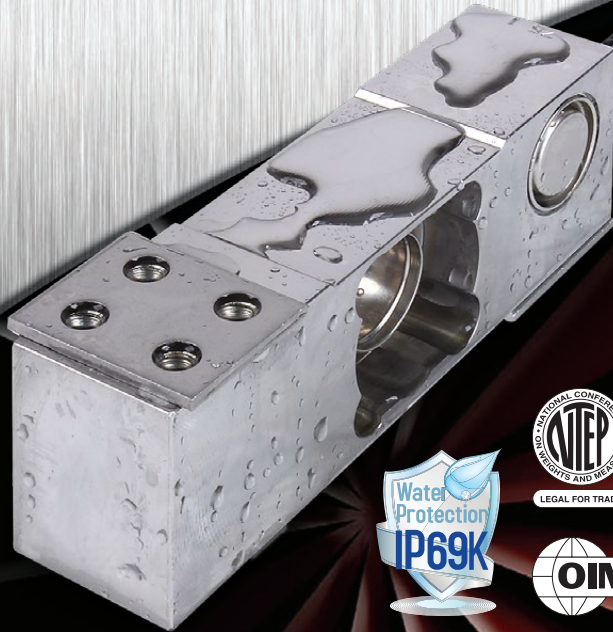
# SSPW Series

## Stainless Steel IP69K Rated Washdown Load Cells



Cardinal Scale's SSPW series stainless steel double bending beam load cells have a low profile design that is hermetically sealed and fully welded at IP69K rating. They are made specifically for light to medium weighing applications and come in 20-kg/44-lb and 75-kg/165-lb capacities. The SSPW series load cells are rated at 3,000 divisions OIML R60 class C. They offer high accuracy with off-center loads for applications such as direct platforms up to 600 x 600 mm / 24 x 24 in and filling scales. 5 m/16 ft load cell cable is provided.

- Double bending beam load cells
- 20 kg / 44 lb and 75 kg / 165 lb capacities
- High-quality stainless steel construction
- Hermetically sealed, fully welded
- IP69K rated ingress protection
- High accuracy with off-center loads
- 3000 divisions
- 5 m / 16 ft load cell cable



### SPECIFICATIONS $< \pm 2$

Model	SSPW-20KG	SSPW-75KG
Capacity	20 kg / 44 lb	75 kg / 165 lb
Accuracy Class	3,000 n. OIML	4,000 / 3,000 n. OIML
Minimum Division	2 g	7.5 g
Service Load	30 kg	112.5 kg

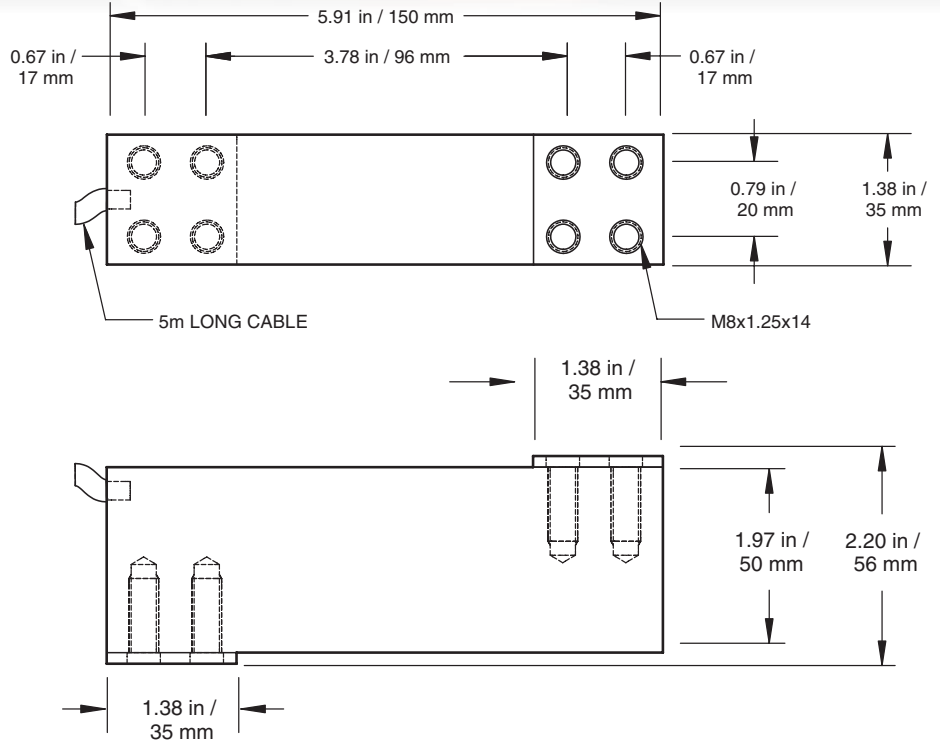
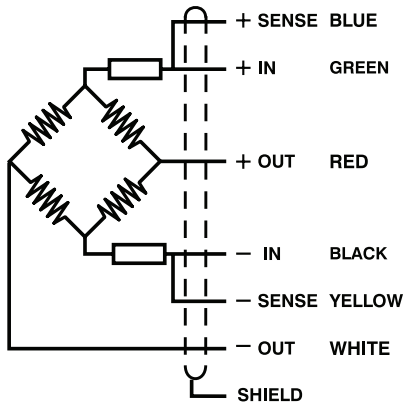
Construction	Stainless Steel
Ingress Protection Rating	IP69K
NTEP Certification	17-136
OIML Certification	R60/2000-GB1-17.13
Minimum Dead Load	0%
Service Load	150% (only for central load on the load cell; not for off-center loads)
Safe Load Limit	200% (only for central load on the load cell; not for off-center loads)
Total Error	$< \pm 0.017 \% S_n$
Repeatability Error	$< \pm 0.01 \% S_n$
Temperature Effect:	
On Zero	$< \pm 0.01 \% S_n / 5^\circ C$
On Sensitivity	$< \pm 0.006 \% S_n / 5^\circ C$
Creep Error (30 minutes)	$< \pm 0.016 \% S_n$
Temperature Compensation	-10 to +40°C
Temperature Limits	-20 to +70°C
Nominal Sensitivity (Sn)	2 $\pm 10 \% mV/V$
Minimum Input Voltage	5V
Maximum Input Voltage	15V
Input Impedance	400 $\pm 20 \Omega$
Output Impedance	350 $\pm 3 \Omega$
No Load Output	$< \pm 2 \% S_n$
Insulation Resistance	$> 5000 M\Omega$
Maximum Deflection (at Ln)	0.3-0.5mm
Net Weight	0.9 kg / 2 lb
Shipping Weight	1.8 kg / 4 lb

# SSPW

# SSPW Series

**Stainless Steel IP69K Rated Washdown Load Cells**

**Model SSPW-20KG Capacity: 20 KG / 44 LB**  
**Model SSPW-75KG Capacity: 75 KG / 165 LB**



## CERTIFICATIONS

The SSPW load cell meets all requirements of OIML R60 and has been issued OIML Certificate No. **R60/2000-GB1-17.13**



The SSPW load cells meet all requirements of Handbook 44, issued by the National Institute of Standards of Technology and have been issued the NTEP Certificate of Conformance No. **17-136**



Cardinal Scale reserves the right to improve, enhance or modify features and specifications without prior notice. All registered trademarks are the property of their respective owners.



102 East Daugherty St., Webb City, MO 64870 USA  
 Toll-Free: (800) 441-4237 E-mail: cardinal@cardet.com  
 www.CardinalScale.com

**SOLD BY:**