

TB SERIES

STAINLESS STEEL SPECIALTY SHEAR BEAM LOAD CELLS



Medium to Heavy Weighing

Cardinal Scale's TB series medium-capacity beam load cells are manufactured for medium to heavy weighing operations such as bench or floor scales. Stainless steel construction offers strength and the ultimate in protection when caustic or corrosive environments are encountered. Heavy capacity single point cells are available in 450 kg to 1,800 kg capacities (1,500 lb to 4,000 lb). The unique design of these shear beam load cells offers cost-saving advantages for many weighing applications. These load cells are potted with a silicone sealant that offers superior waterproofing, while remaining flexible over the life of the cell. This special compound protects the load cell strain gages, and over a broad temperature range has no effect on load cell precision accuracy. All load cells have threaded mounting holes, and a 6 m / 20 ft integral multiconductor cable secured by a strain relief seal.



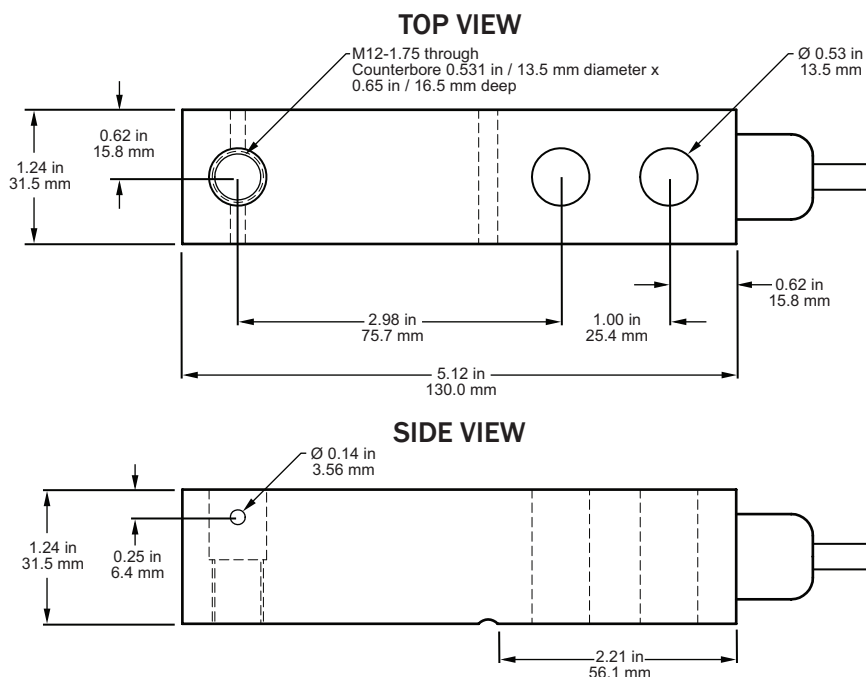
TB load cells come with 6 m / 20 ft
integral multiconductor cable
secured by a strain relief seal.

 **Cardinal**
Cardinal Scale Manufacturing Co.

MEDIUM-CAPACITY SHEAR BEAM LOAD CELLS

FEATURES

- Capacities of 450 kg, 1,100 kg, and 1,800 kg
- Waterproof construction
- Stainless steel for corrosion resistance
- Direct mounting to weighing platform
- 6 m / 20 ft integral shielded cable



Please Note: A spacer is required if the mounting area of the scale extends beyond the mounting area of the cell (2.21 in dimensions on the side view).

MODEL	CAPACITY
TB-1KMP	1,000 lb / 450 kg
TB-2.5KMP	2,500 lb / 1,100 kg
TB-4KMP	4,000 lb / 1,800 kg

CERTIFICATIONS

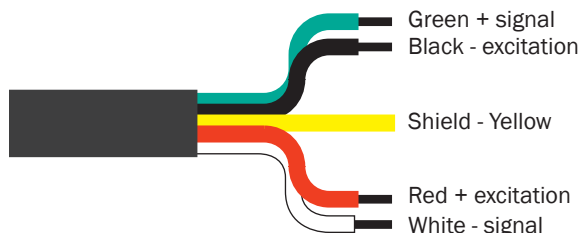


R60/2017-A-NL1-21.23



17-086

ELECTRICAL INFORMATION



SPECIFICATIONS

MECHANICAL DATA	
Rated Capacity, (R.C.)E _{max}	1,000 lb / 450 kg 2,500 lb / 1,100 kg 4,000 lb / 1,800 kg
Minimum Dead Load	0 kg
Safe Load Limit	150% R.C.
Ultimate Load	250% R.C.
Deflection at R.C.	0.2 to 0.4 mm
Spring Element Material	17-4 PH
Net Weight	0.82 kg

ELECTRICAL DATA	
Rated Output	2mV/V
Excitation Voltage (recommended)	10 VDC
Excitation Voltage (Maximum)	15 VDC
Cable Length	6 m / 20 ft
Terminal Resistance	
Excitation Signal	400 +/- 20 ohms 350 +/- 3 ohms
Zero Load Output	+/- 2% R.C.
Insulation Resistance	>5,000 megaohms at 50 VDC

CERTIFICATE DATA	
Issuing Body	NTEP / OIML
Certificate Number	17-086 / R60/2017-A-NL1-21.23
Accuracy Class	C3
Maximum Number of Load Cell Intervals (N _{max})	3,000 - OIML 5,000 - NTEP III / 10,000 NTEP IIIL
Single/Multiple	M
Humidity Symbol	CH
Minimum Load Cell Verification Interval (V _{min})	0.05, 0.10, & 0.20 kg

ENVIRONMENTAL DATA	
Temperature Compensation Range	-10°C to +40°C
Operating Temperature Range	-30°C to +90°C
Construction and Protection Code	IP66
Barometric Pressure Effect on Zero Load Output	<1 v (min)/1kPa

Cardinal
Cardinal Scale Manufacturing Co.
102 E. Daugherty, Webb City, MO 64870 USA
Ph: 417-673-4631 or 800-441-4237 • Fax: 417-673-2153
www.CardinalScale.com

SOLD BY: